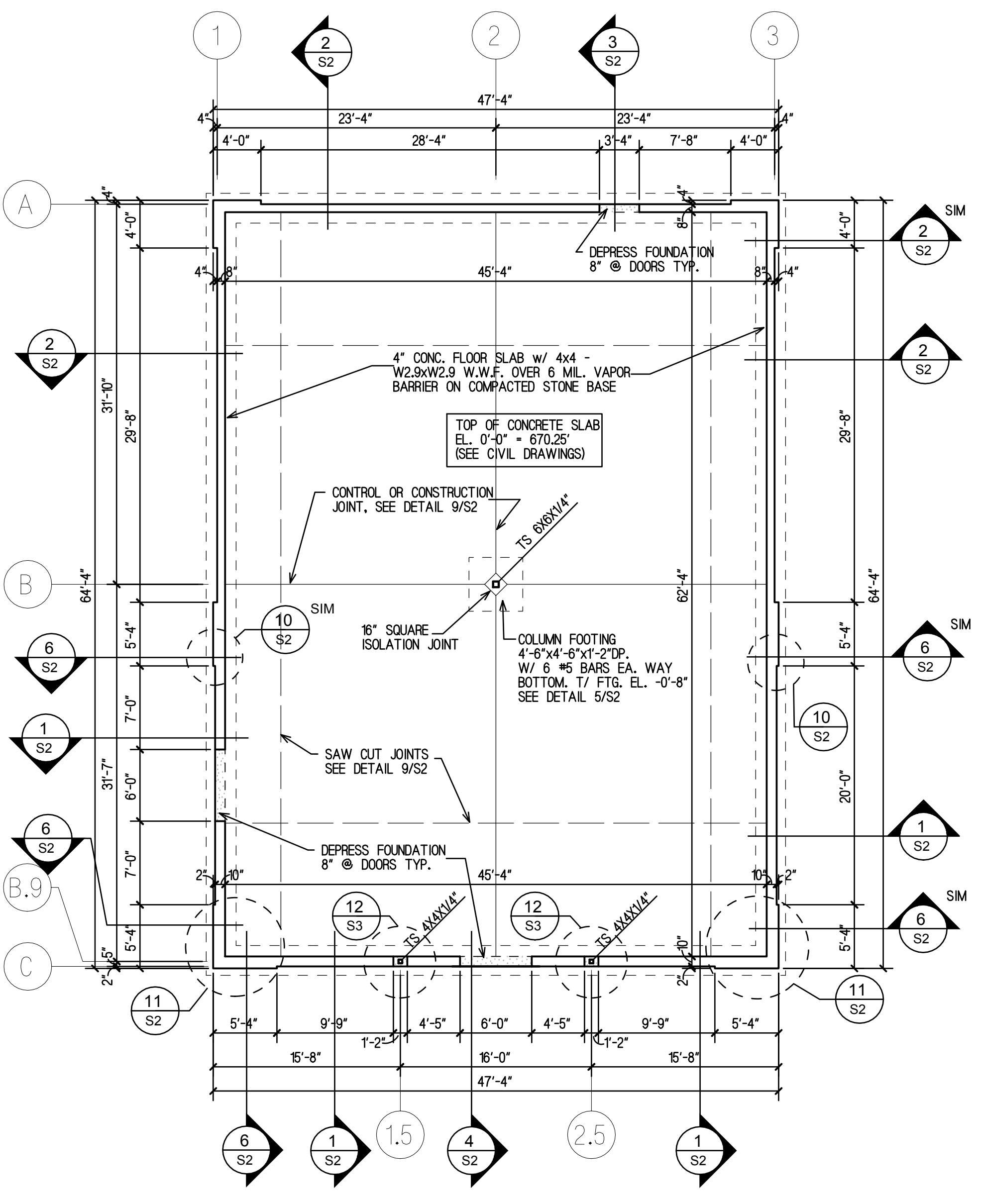


Roof Framing Plan
Scale: 1/8" = 1'-0" NORTH

- ROOF NOTES:
- NET WIND UPLIFT PRESSURE (COMPONENTS) FOR A 6'-0" WIDE STRIP AROUND THE BUILDING PERIMETER = 19 PSF.
 - NET WIND UPLIFT PRESSURE (COMPONENTS) FOR REMAINDER OF ROOF = 8 PSF.
 - CALCULATED DECK DIAPHRAGM SHEAR @ EAST AND WEST WALLS = 260 PSF. (SERVICE LOAD)
 - FACTOR OF SAFETY = 2.35
 - USE 5/8" DIA. PUDDLE WELDS AT SUPPORTS WITH #10 TEK SCREWS FOR SIDELAPS.
 - FOR 4'-0" SPAN USE 36/3 WELD PATTERN WITH 3 SIDELAPS FOR A 12'-0" WIDE ZONE ALONG EAST AND WEST WALLS.
 - FOR 4'-0" SPAN USE 36/3 WELD PATTERN WITH 1 SIDELAP FOR REMAINDER OF ROOF.
 - SEE DETAIL 1 & 5/S3: WELD DECK ANGLE TO JOIST.
 - SEE DETAIL 1 & 5/S3: WELD DECK TO DECK ANGLE MATCHING SIDELAP PATTERN.
 - SUBMIT SHOP DRAWING SHOWING INFORMATION STATED ABOVE.



Foundation Plan
Scale: 1/8" = 1'-0" NORTH