

GENERAL DEMOLITION NOTES:

1. ANY DEMOLITION IS TO BE PERFORMED IN STRICT CONFORMANCE WITH ALL APPLICABLE CITY, COUNTY AND STATE, AND/OR GOVERNING BODY'S STANDARDS.
2. THE DEMOLITION PLAN SHALL BE DONE IN CONJUNCTION WITH THE GEOTECHNICAL INVESTIGATION REPORT.
3. EROSION AND SEDIMENT CONTROL MEASUREMENTS SHALL BE MAINTAINED AT ALL TIMES DURING DEMOLITION.
4. THE PURPOSE OF THIS DRAWING IS TO CONVEY THE OVERALL SCOPE OF WORK AND IT IS NOT INTENDED TO COVER ALL DETAILS OR SPECIFICATIONS REQUIRED TO COMPLY WITH GENERALLY ACCEPTED DEMOLITION PRACTICES. CONTRACTOR SHALL THOROUGHLY FAMILIARIZE HIMSELF WITH THE SITE, SCOPE OF WORK, AND ALL EXISTING CONDITIONS AT THE JOB SITE PRIOR TO BIDDING AND COMMENCING THE WORK. THE DEMOLITION CONTRACTOR SHALL BE SOLELY RESPONSIBLE FOR MEANS, METHODS, TECHNIQUES, OR PROCEDURES USED TO COMPLETE THE WORK IN ACCORDANCE WITH THE CONSTRUCTION DOCUMENTS AND IS LIABLE FOR THE SAFETY OF THE PUBLIC OR CONTRACTOR'S EMPLOYEES DURING THE COURSE OF THE PROJECT.
5. THE DEMOLITION PLAN IS INTENDED TO SHOW REMOVAL OF KNOWN SITE FEATURES AND UTILITIES AS SHOWN ON THE SURVEY. THERE MAY BE OTHER SITE FEATURES, UTILITIES, STRUCTURES, AND MISCELLANEOUS ITEMS BOTH BURIED AND ABOVE GROUND THAT ARE WITHIN THE LIMITS OF WORK THAT MAY NEED TO BE REMOVED FOR THE PROPOSED PROJECT THAT ARE NOT SHOWN HEREON. THE CONTRACTOR IS RESPONSIBLE FOR THE REMOVAL OF SUCH ITEMS AT NO ADDITIONAL COST TO THE OWNER.
6. THE CONTRACTOR SHALL CONTACT RESPECTIVE UTILITY COMPANIES PRIOR TO DEMOLITION TO COORDINATE DISCONNECTION AND REMOVAL OF EXISTING UTILITIES WITHIN THE AREA OF WORK.
7. THE CONTRACTOR SHALL BE SOLELY RESPONSIBLE FOR ANY DAMAGE TO EXISTING UTILITIES THAT ARE INTENDED TO CONTINUE TO PROVIDE SERVICE WHETHER THESE UTILITIES ARE SHOWN ON THE PLAN OR NOT.
8. UPON DISCOVERY OF ANY UNDERGROUND TANKS, CONTRACTOR SHALL IMMEDIATELY NOTIFY THE OWNER'S REPRESENTATIVE. NO REMOVAL OF TANKS SHALL OCCUR UNTIL AUTHORIZED BY OWNER.
9. DEBRIS SHALL NOT BE BURIED ON THE SUBJECT SITE. ALL UNSUITABLE MATERIAL AND DEBRIS SHALL BE REMOVED FROM THE SITE AND DISPOSED OF IN ACCORDANCE WITH ALL VILLAGE, STATE, AND FEDERAL LAWS AND ORDINANCES.
10. AS SOON AS DEMOLITION WORK HAS BEEN COMPLETED, THE FINAL GRADE OF BACKFILL IN DEMOLITION AREAS SHALL BE COMPACTED PER THE GEOTECHNICAL REPORT TO PRESENT A NEAT, WELL DRAINED APPEARANCE, AND TO PREVENT WATER FROM DRAINING UNNECESSARILY ONTO ADJACENT PROPERTIES. CONTRACTOR SHALL GRADE SITE TO EXISTING STORM DRAINAGE SYSTEM TO REMAIN ON SITE.
11. EXISTING TREES TO REMAIN SHOULD BE PROTECTED FROM DAMAGE DURING DEMOLITION AND CONSTRUCTION.
12. THE CONTRACTOR IS TO COORDINATE WORK IN THIS PROJECT TO ENSURE ACCESS TO ADJACENT PROPERTIES AT ALL TIMES.
13. THE USE OF EXPLOSIVES SHALL NOT BE PERMITTED.
14. CONTRACTOR TO DETERMINE LOCATION OF ALL EXISTING UTILITIES PRIOR TO DEMOLITION WORK (FIELD VERIFY).

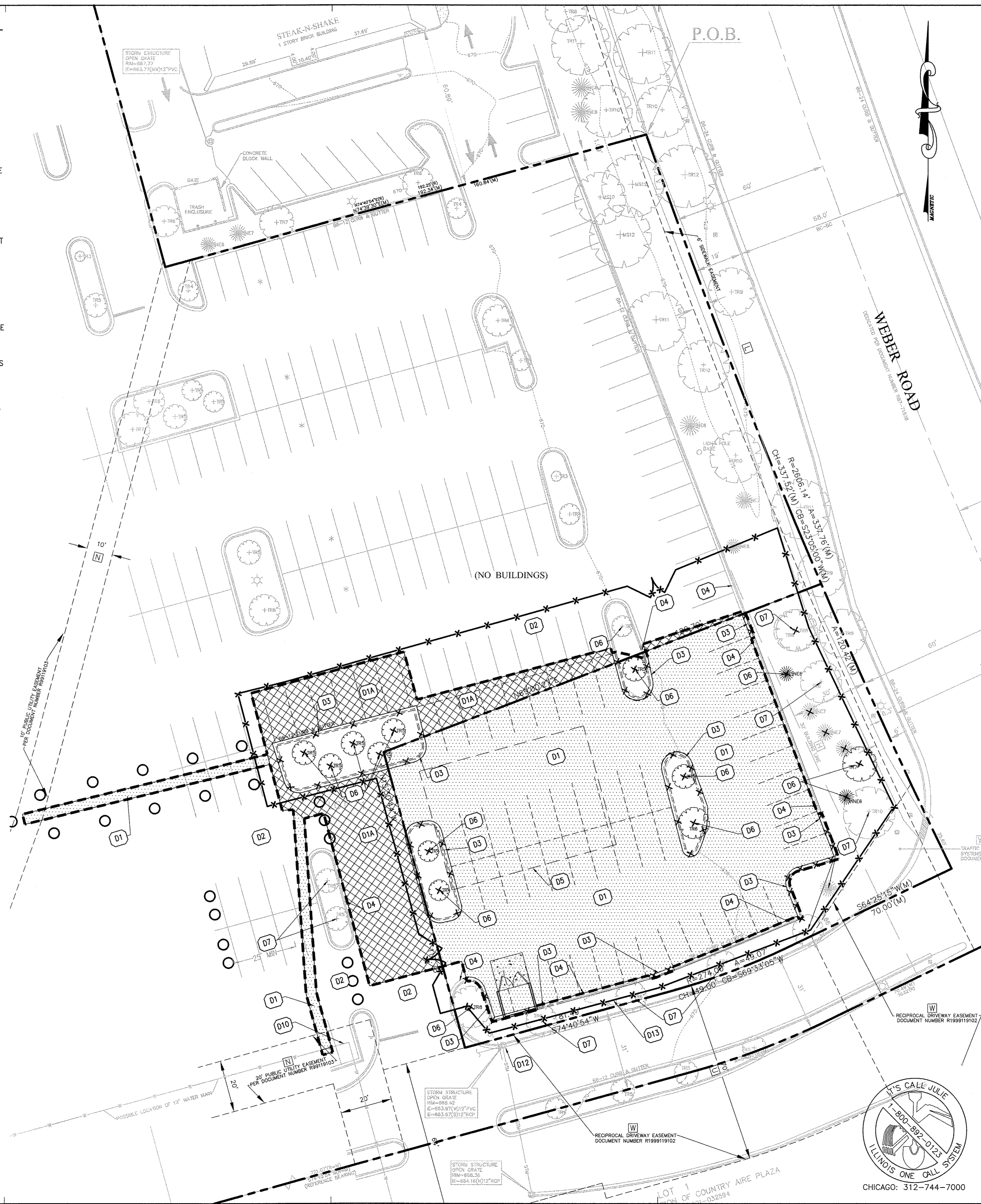
EXISTING LEGEND:

○ FOUND 7/8" O.D.I.P. (UNLESS OTHERWISE NOTED) SHOWN LOCATION	○ 20' PUBLIC UTILITY EASEMENT (PER DOCUMENT NUMBER R19919103)	○ WATER	○ FENCE MARKED
● CONCRETE MONUMENT	○ 20' CONCRETE DRIVEWAY EASEMENT (PER DOCUMENT NUMBER R19919102)	○ WALKER MARKER	○ TELEPHONE MARKER
○ CRACKS IN CONCRETE	○ 10' CONCRETE DRIVEWAY EASEMENT (PER DOCUMENT NUMBER R19919102)	○ WALKER MARKER	○ WALKER MARKER
○ MARBLE	○ 5' CONCRETE DRIVEWAY EASEMENT (PER DOCUMENT NUMBER R19919102)	○ WALKER MARKER	○ WALKER MARKER
○ WOOD STRUCTURE	○ 2' CONCRETE DRIVEWAY EASEMENT (PER DOCUMENT NUMBER R19919102)	○ WALKER MARKER	○ WALKER MARKER
○ SANITARY MANHOLE	○ 1' CONCRETE DRIVEWAY EASEMENT (PER DOCUMENT NUMBER R19919102)	○ WALKER MARKER	○ WALKER MARKER
○ VALVE VAULT	○ 1' CONCRETE DRIVEWAY EASEMENT (PER DOCUMENT NUMBER R19919102)	○ WALKER MARKER	○ WALKER MARKER
○ FIRE HYDRANT	○ 1' CONCRETE DRIVEWAY EASEMENT (PER DOCUMENT NUMBER R19919102)	○ WALKER MARKER	○ WALKER MARKER
○ FURROW END SECTION	○ 1' CONCRETE DRIVEWAY EASEMENT (PER DOCUMENT NUMBER R19919102)	○ WALKER MARKER	○ WALKER MARKER
○ UTILITY POLE	○ 1' CONCRETE DRIVEWAY EASEMENT (PER DOCUMENT NUMBER R19919102)	○ WALKER MARKER	○ WALKER MARKER
○ LIGHT POLE	○ 1' CONCRETE DRIVEWAY EASEMENT (PER DOCUMENT NUMBER R19919102)	○ WALKER MARKER	○ WALKER MARKER
○ CONCRETE TRAFFIC SIGNAL	○ 1' CONCRETE DRIVEWAY EASEMENT (PER DOCUMENT NUMBER R19919102)	○ WALKER MARKER	○ WALKER MARKER
○ SYMMETRIC SIGNAL MARKERS	○ 1' CONCRETE DRIVEWAY EASEMENT (PER DOCUMENT NUMBER R19919102)	○ WALKER MARKER	○ WALKER MARKER
○ OVERHEAD ELECTRIC WIRES	○ 1' CONCRETE DRIVEWAY EASEMENT (PER DOCUMENT NUMBER R19919102)	○ WALKER MARKER	○ WALKER MARKER
○ GAS METER	○ 1' CONCRETE DRIVEWAY EASEMENT (PER DOCUMENT NUMBER R19919102)	○ WALKER MARKER	○ WALKER MARKER
○ ELECTRIC METER	○ 1' CONCRETE DRIVEWAY EASEMENT (PER DOCUMENT NUMBER R19919102)	○ WALKER MARKER	○ WALKER MARKER
○ TRANSFORMER PAD	○ 1' CONCRETE DRIVEWAY EASEMENT (PER DOCUMENT NUMBER R19919102)	○ WALKER MARKER	○ WALKER MARKER
○ TELEPHONE PEDestal	○ 1' CONCRETE DRIVEWAY EASEMENT (PER DOCUMENT NUMBER R19919102)	○ WALKER MARKER	○ WALKER MARKER
○ ELECTRIC PEDestal	○ 1' CONCRETE DRIVEWAY EASEMENT (PER DOCUMENT NUMBER R19919102)	○ WALKER MARKER	○ WALKER MARKER
○ 2" CHANGE MANHOLE	○ 1' CONCRETE DRIVEWAY EASEMENT (PER DOCUMENT NUMBER R19919102)	○ WALKER MARKER	○ WALKER MARKER
○ MADE TELEVISION PEDestal	○ 1' CONCRETE DRIVEWAY EASEMENT (PER DOCUMENT NUMBER R19919102)	○ WALKER MARKER	○ WALKER MARKER
○ COMMERCIAL IN POSITION MANHOLE	○ 1' CONCRETE DRIVEWAY EASEMENT (PER DOCUMENT NUMBER R19919102)	○ WALKER MARKER	○ WALKER MARKER
○ VALVE BOX	○ 1' CONCRETE DRIVEWAY EASEMENT (PER DOCUMENT NUMBER R19919102)	○ WALKER MARKER	○ WALKER MARKER
○ SIGN	○ 1' CONCRETE DRIVEWAY EASEMENT (PER DOCUMENT NUMBER R19919102)	○ WALKER MARKER	○ WALKER MARKER
○ SIGN	○ 1' CONCRETE DRIVEWAY EASEMENT (PER DOCUMENT NUMBER R19919102)	○ WALKER MARKER	○ WALKER MARKER
○ SIGN	○ 1' CONCRETE DRIVEWAY EASEMENT (PER DOCUMENT NUMBER R19919102)	○ WALKER MARKER	○ WALKER MARKER
○ SIGN	○ 1' CONCRETE DRIVEWAY EASEMENT (PER DOCUMENT NUMBER R19919102)	○ WALKER MARKER	○ WALKER MARKER
○ SIGN	○ 1' CONCRETE DRIVEWAY EASEMENT (PER DOCUMENT NUMBER R19919102)	○ WALKER MARKER	○ WALKER MARKER
○ SIGN	○ 1' CONCRETE DRIVEWAY EASEMENT (PER DOCUMENT NUMBER R19919102)	○ WALKER MARKER	○ WALKER MARKER

PROPOSED LEGEND:

— — —	PROPERTY LINE
— X — X — X	EXISTING CURB & GUTTER TO BE REMOVED
⊗	EXISTING TREE TO BE REMOVED
*	EXISTING LIGHT POLE TO BE REMOVED
D1	SAW-CUT FULL DEPTH AND REMOVE EXISTING BITUMINOUS PAVEMENT SECTION
D1A	SAW-CUT AND REMOVE EXISTING BITUMINOUS PAVEMENT. SUB-BASE TO REMAIN
X	TEMPORARY CONSTRUCTION FENCE
○ ○ ○	TRAFFIC CONTROL DRUMS
- - - - -	LIMIT OF CONSTRUCTION / SAW-CUT AND REMOVE BITUMINOUS PAVEMENT

PRELIMINARY PLANS
(NOT FOR CONSTRUCTION)



DEMOLITION KEY NOTES

- D1 SAW-CUT AND REMOVE EXISTING FULL DEPTH BITUMINOUS PAVEMENT. SEE SHEET C3.0 SITE PLAN FOR DETAIL. [IN AREA OF FULL DEPTH PAVEMENT REMOVAL STONE/AGGREGATE BASE TO BE STOCKPILED FOR RE-USE ON-SITE.]
- D1A SAW-CUT AND REMOVE EXISTING BITUMINOUS PAVEMENT. SUB-BASE TO REMAIN. EXISTING PAVEMENT TO REMAIN AND BE PROTECTED.
- D2 EXISTING PAVEMENT TO REMAIN AND BE PROTECTED.
- D3 SAW-CUT AND REMOVE EXISTING CURB & GUTTER. FIELD VERIFY.
- D4 EXISTING CURB & GUTTER TO REMAIN AND BE PROTECTED.
- D5 PROPOSED BUILDING FOOTPRINT AREA. SEE SHEET C3.0 SITE PLAN FOR DETAIL.
- D6 EXISTING TREES TO BE REMOVED. SEE LANDSCAPE PLAN FOR DETAIL.
- D7 EXISTING TREES TO REMAIN AND BE PROTECTED DURING CONSTRUCTION. SEE LANDSCAPE PLAN FOR DETAIL.
- D8 EXISTING LIGHT POLE TO BE RELOCATED. SEE UTILITY PLAN FOR NEW LIGHT POLE LOCATION.
- D9 EXISTING LIGHT POLE TO REMAIN AND BE PROTECTED.
- D10 EXISTING WATER LINE TO BE PROTECTED DURING CONSTRUCTION. CONTRACTOR SHALL FIELD VERIFY LOCATION OF EXISTING WATER LINE AND COORDINATE WITH THE UTILITY COMPANY PRIOR TO ANY REMOVAL OF UTILITIES.
- D11 EXISTING SANITARY SEWER LINE TO BE PROTECTED DURING CONSTRUCTION. CONTRACTOR SHALL FIELD VERIFY LOCATION OF EXISTING SANITARY SEWER LINE AND COORDINATE WITH THE UTILITY COMPANY PRIOR TO ANY REMOVAL OF UTILITIES.
- D12 EXISTING UTILITY STRUCTURES SHALL REMAIN AND BE PROTECTED. GENERAL CONTRACTOR SHALL FIELD VERIFY ALL EXISTING UTILITIES PRIOR TO DEMOLITION. CONTRACTOR SHALL REPAIR ANY EXISTING CURB & GUTTER AND PAVEMENT DAMAGED DURING PROPOSED UTILITY CONNECTION.
- D13 TEMPORARY CONSTRUCTION FENCE. CONTRACTOR TO TAKE CARE AND PROTECT EXISTING TREE ROOTS WHILE INSTALLING FENCE POSTS.

BENCHMARK:

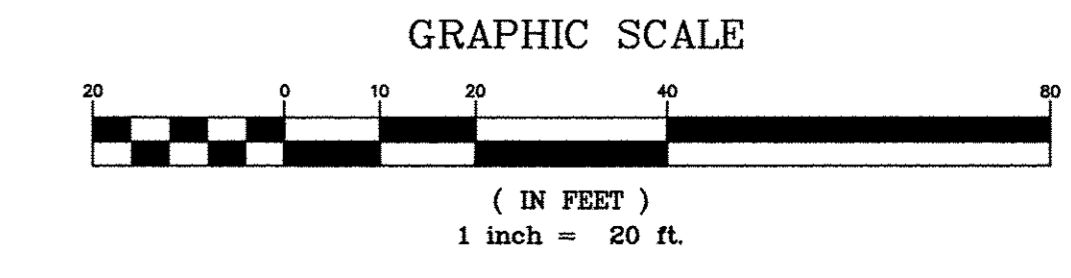
REFERENCE BENCHMARK:
COUNTY OF WILL CONTROL MONUMENT 6067 (NAVDB88)
TABLET STAMPED "639.15 1982" IN THE SOUTHEAST HEADWALL OF BRIDGE OVER THE EAST BRANCH OF THE DUPAGE RIVER NEAR THE NORTHEAST CORNER OF SECTION 7.
ELEVATION = 638.20

SITE BENCHMARKS:

- SITE BENCHMARK 1
FINISHED FLOOR AT FRONT SOUTHEAST DOOR OF STEAK-N-SHAKE.
ELEVATION = 671.03
- SITE BENCHMARK 2
CROSS CUT IN THE SOUTH SIDE OF CONCRETE TRAFFIC SIGNAL BASE.
ELEVATION = 673.16

FLOOD NOTE:

THIS SITE FALLS WITHIN "OTHER AREAS; ZONE "X" (AREAS DETERMINED TO BE OUTSIDE 500-YEAR FLOODPLAIN) AS DEFINED BY THE FLOOD INSURANCE RATE MAP, MAP NUMBERS 17197C0034 E AND 17197C0053 E, BOTH HAVING EFFECTIVE DATES OF SEPTEMBER 6, 1995.



COPYRIGHT NOTICE
This drawing is the property of the above referenced Professional and is not to be used for any purpose other than the specific project and site named herein, and cannot be reproduced in any manner without the express written permission from the Professional.

ISSUE/REVISION RECORD	
DATE	DESCRIPTION
10-28-11	VILLAGE REVIEW
1-10-14	VILLAGE REVIEW
2-7-14	VILLAGE REVIEW
5-12-14	REV. PER NEW BLDG.
5-29-14	BUILDING PERMIT
7-11-14	VILLAGE REVIEW
9-5-14	PLAN COMMISSION
10-7-14	BUILDING PERMIT
10-23-14	VILLAGE REVIEW

PROFESSIONAL SEAL



PROFESSIONAL IN CHARGE
KERI WILLIAMS, PE
PROFESSIONAL ENGINEER
LICENSE NO. 062-058662

PROJECT MANAGER
KERI WILLIAMS, PE

QUALITY CONTROL
JAMES COYLE

DRAWN BY
JIA-JENG CHU

KEY DEVELOPMENT PARTNERS

BOLINGBROOK, IL
(SWQ) WEBER RD & BOUGHTON RD

PROJECT NUMBER
20130893.0

SHEET TITLE
DEMOLITION PLAN

SHEET NUMBER
C2.0