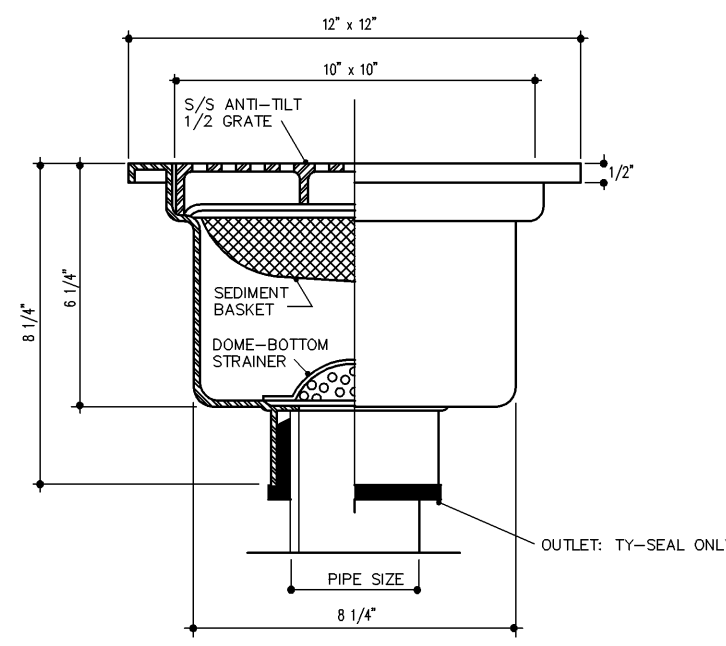


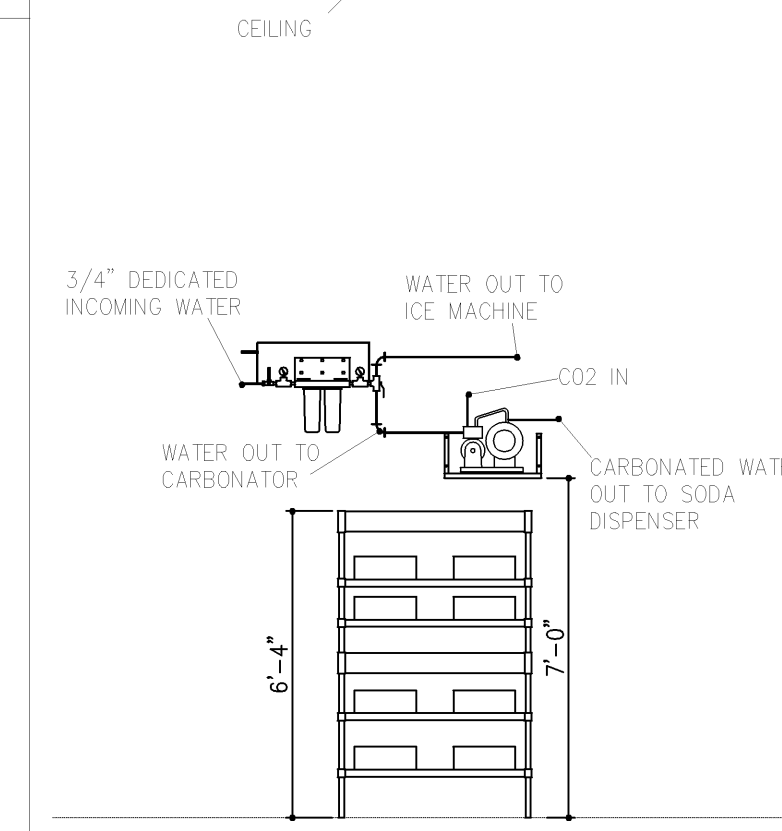
# PLUMBING SCHEDULE

NO.	UTILITY	SIZE		HEIGHT A.F.F.			BTU/hr	CONNECTED TO /REMARKS
		ROUGH-IN	CONNECTION	FLOOR	WALL	DFA		
FD	FLOOR DRAIN	3"	3"	-1/2" BFF				SEE PLUMBING NOTE "F"
FS	FLOOR SINK	3"	3"	FLUSH				1/2 GRATE (SEE DETAIL THIS SHEET)
FFD	FUNNEL FLOOR DRAIN	3"	3"	FLUSH				4" HIGH FUNNEL FOR INDIRECT WASTE FROM FIXTURES
HSD	HAND SINK DRAIN	1 1/2"	1 1/2"		12"			BTC ON HAND SINK WASTE
MSD	MOP SINK DRAIN	2"	2"	SU 2 1/4"				FREE FLOW INDIRECT WASTE INTO HUB DRAIN
SL	BEVERAGE LINES							6" PVC CHASE UNDER SLAB, THEN UP THE WALL BEHIND ICE MACHINE - BTC
G100	GAS	3/4"	3/4"				110,000	QUICK DISCONNECT HOSE/RESTRAINING CABLE BY CONCEPT SERVICES
G115-48	GAS	3/4"	3/4"				108,000	QUICK DISCONNECT HOSE/RESTRAINING CABLE BY CONCEPT SERVICES
G120	GAS	3/4"	3/4"				162,000	QUICK DISCONNECT HOSE/RESTRAINING CABLE BY CONCEPT SERVICES
225	COLD WATER	1/2"	1/2"		72"			BTC ON ICE CUBER
305	HOT/COLD WATER	1/2"	1/2"		16"			BTC ON HAND SINK FAUCET
306	HOT/COLD WATER	1/2"	1/2"		36"			BTC ON MOP SINK FAUCET
315	HOT/COLD WATER	1/2"	1/2"		16"			BTC ON SINK FAUCET
320	HOT/COLD WATER	1/2"	1/2"		16"			BTC ON SINK FAUCET
321.1	HOT/COLD WATER	1/2"	1/2"		16"			BTC ON PRE-RINSE SPRAY FAUCET
705	COLD WATER	3/4"	3/4"		24"			BTC ON UNDERCOUNTER ICE MACHINE-DRAIN TO FLOOR SINK
710.1	COLD WATER	3/4"	3/4"		72"			BTC ON SODA CARBONATOR
715	COLD WATER	1/2"	1/4"		24"			BTC ON TEA BREWER-DRAIN TO FLOOR SINK
950	COLD WATER	3/4"	3/4"					BTC ON FILTRATION SYSTEM

## PLUMBING DETAIL



1 FLOOR SINK (TYP. DETAIL)  
SCALE: N.T.S.



WATER FILTER DIAGRAM  
ALL ICE-MACHINES  
NOT TO SCALE

## PLUMBING NOTES

- NOTES**
- A PLUMBER TO PROVIDE BACKFLOW PREVENTERS IN WATER SUPPLY LINES AS REQUIRED BY LOCAL CODES
  - B PLUMBER TO SPECIFY AND LOCATE EQUIPMENT AND UTILITIES FOR THESE LOCATIONS.
  - C PLUMBER TO CONNECT ALL WATER LINES, GAS LINES, WASTE LINES, ETC. TO FULLY CONNECT ALL EQUIPMENT AND RUN CONDENSATE LINES FROM UNITS TO DRAINS AND THESE LINES TO BE NO SMALLER THAN THE STUB-OUT OF THE FIXTURE. PLUMBER TO PROVIDE GATE VALVES, CUT-OFFS, TRAPS, HYDROSTATIC SHOCK ELIMINATORS, PRESSURE REGULATORS AND MATERIALS NECESSARY TO CONNECT ALL LINES, UNLESS OTHERWISE SPECIFIED IN THE ITEM SPECIFICATIONS. FAUCETS, DRAIN OUTLET FITTINGS IN FIXTURES AND SPECIALTY ITEMS ARE TO BE FURNISHED BY THE ITEM EQUIPMENT SUPPLIER AS OUTLINED IN THE ITEM SPECIFICATIONS. ALL WORK TO BE PERFORMED IN FULL ACCORDANCE WITH THE APPLICABLE CODES RELATING TO INSTALLATION AND HOOD-UP OF EQUIPMENT. OMISSIONS OR ERRORS ON THE SCHEDULE DO NOT RELIEVE THE PLUMBING CONTRACTOR FROM COMPLETE FINAL PLUMBING RESPONSIBILITY.
  - D ALL OUTLETS AND CONNECTIONS SHOWN RELATE TO KITCHEN EQUIPMENT ONLY. REFER TO ARCHITECTURAL/ENGINEERING PLANS FOR ADDITIONAL REQUIREMENTS.
  - E ALL DIMENSIONS GIVEN ARE FROM COLUMN CENTERLINES AND/OR FINISHED WALLS AND ARE IN INCHES TO 2'-0". ELEVATIONS GIVEN ARE FROM FINISHED FLOORS. ALL ROUGH-INS SHOWN ARE TO BE RUN INSIDE WALLS (EXCEPT STUB-UPS) LOCATIONS INDICATE POINT OF EXIT FROM WALLS, CEILINGS OR FLOORS.
  - F ALL FLOOR DRAINS TO SET 1/2" BELOW FINISHED FLOOR UNLESS OTHERWISE NOTED. DO NOT SLOPE FLOORS SO CLOSE TO DRAINS AS TO CREATE "PITS" OR "DIPS" IN FLOOR. MINIMUM RADIUS OF SLOPE TO BE 24" FROM CENTERLINE OF DRAIN.
  - G PLUMBER TO RUN HARD COPPER DRAINLINE HIGH AS POSSIBLE IN WALK-IN VAULT FROM BLOWER COIL TO WALL THEN SLOPING DOWN TO A POINT 18" ABOVE FLOOR THEN THRU WALL FORMING A "P" TRAP FLAT AGAINST WALL ABOVE DRAIN THEN EXTENDING TO DRAIN. SECURE LINES IN A NEAT MANNER AND FINISH WITH CHROMATONE PAINT - SEAL ALL PENETRATIONS.
  - H REFER TO P-2 DRAWING FOR TRUNK LINES

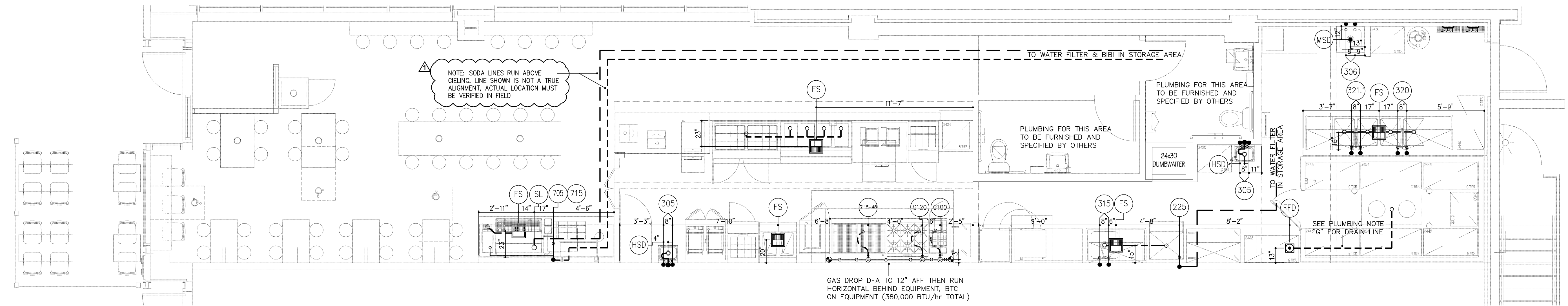
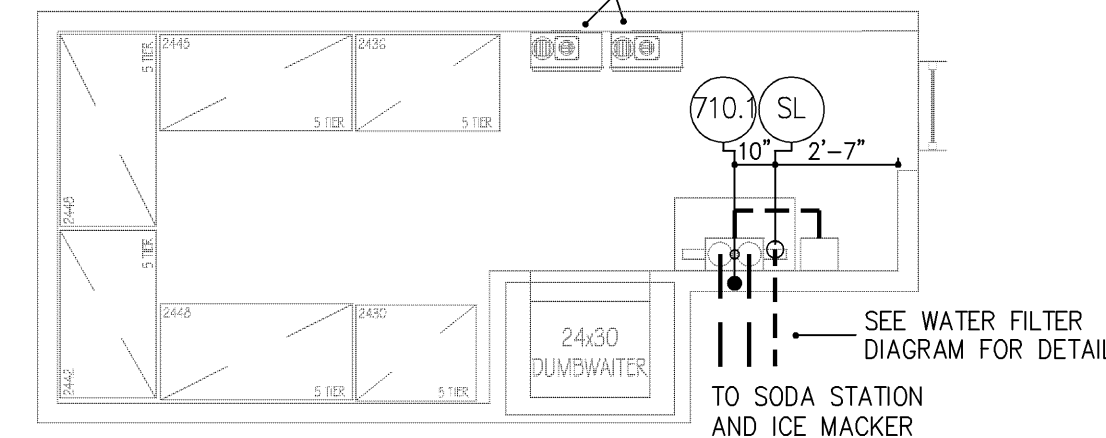
## PLUMBING SYMBOLS

SYMBOLS	ABBREVIATIONS
●	HW HOT WATER
○	CW COLD WATER
○	DR DRAIN
○	AFF ABOVE FINISHED FLOOR
○	BFF BELOW FINISHED FLOOR
○	FD FLOOR DRAIN
○	FFD FUNNEL DRAIN
○	FS FLOOR SINK
○	HD HUB DRAIN
○	SS STEAM SUPPLY
○	SR STEAM RETURN
○	EL ELEVATION ABOVE FINISHED FLOOR
○	SU STUB UP ABOVE FINISHED FLOOR
○	GPH GALLONS PER HOUR
○	GPM GALLONS PER MINUTE
○	BHP BOILER HORSE POWER
○	PPH POUNDS PER HOUR
○	PSI POUNDS PER SQUARE INCH
○	BTC BRANCH TO CONNECTION POINT AND CONNECT EQUIPMENT
○	DFA DOWN FROM ABOVE

**WATER SUPPLY REQUIREMENTS**

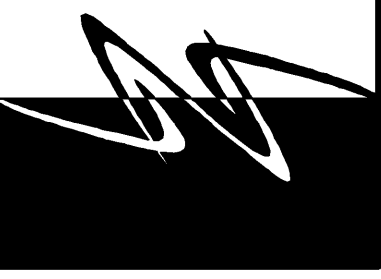
ALL WATER SUPPLIED KITCHEN EQUIPMENT SYSTEMS ARE SUBJECT TO CONTAMINATION AND FAILURE DUE TO MINERAL CONTENT FOUND IN MOST WATER SUPPLIES. TO MINIMIZE SERVICE PROBLEMS AND TO MEET WARRANTY REQUIREMENTS A WATER TREATMENT (SOFTENING) SYSTEM IS RECOMMENDED WHEN WATER QUALITY IS FOUND TO EXCEED LIMITS STATED BELOW AND IN OPERATORS MANUALS. RECOMMENDED MINIMUM WATER QUALITY STANDARDS ARE TOTAL DISSOLVED SOLIDS (TDS) CONTENT SHOULD NOT EXCEED 30 PARTS PER MILLION, AND WATER PH SHOULD BE 7.0 OR HIGHER

PLUMBING FOR HOT WATER HEATER TO BE FURNISHED AND SPECIFIED BY OTHERS



GAS DROP DFA TO 12" AFF THEN RUN HORIZONTAL BEHIND EQUIPMENT. BTC ON EQUIPMENT (380,000 BTU/hr TOTAL)

LINLEDESIGNGROUP, INC  
WEST MAIN STREET  
LENA, IL 61048 158  
PHONE: 815-369-9155  
FAX: 815-369-4495  
WWW.LINLEDESIGN.COM



Concept Services  
12521 Armand Drive  
Austin, TX 78727  
Kitchen Supplier/Designer  
512-343-3100 Office 512-343-3195 Fax

ALL DRAWINGS AND WRITTEN MATERIAL CONTAINED HEREIN ARE THE PROPERTY OF THE ARCHITECT. THEY MAY NOT BE REPRODUCED, COPIED, REUSED, OR DISCLOSED IN ANY MANNER WITHOUT WRITTEN AUTHORIZATION FROM THE ARCHITECT.

**Pepe's**  
MEXICAN GRILL  
20 E. Chicago Avenue  
Chicago, IL 60611-2009

REVISIONS:	DESCRIPTION:
#	DATE: ISSUED FOR PERMIT
1	1/8/10
2	1/18/10
3	ISSUED FOR PERMIT

PROJECT NUMBER: 09-116  
DRAWN BY: JI  
CHECKED BY: MG

SHEET TITLE:  
PLUMBING  
ROUGH-IN  
PLAN

SHEET NUMBER:  
K2