

1 ELECTRICAL RISER DIAGRAM
E4.0 NO SCALE:

PANELBOARD

PANEL: EXISTING KP1 * TYPE: N00D BUS: 400A VOLTAGE: 120/ 208 3 PHASE 4 WIRE
 LOCATION: RM 106 MOUNTING: FLUSH MAIN: MAIN BREAKER NEUTRAL: ⇒ 100% 200% OPTIONS: ⇒ BOLT-ON CIRCUIT BREAKERS
 ENCLASURE: NEMA 1 ⇒ SURFACE ⇒ MAIN LUGS ONLY ⇒ EQUIPMENT ISOLATED ⇒ FEED THRU LUGS
 BUS TYPE: COPPER FEEDER: ⇒ TOP ⇒ BOTTOM GROUND: ⇒ EQUIPMENT ISOLATED ⇒ MONO-FLUSH TRIM SHUNT TRIP

ITEM	TYPE	AMP RATING	POLE	CR NO.	LEFT PHASE LOAD			RIGHT PHASE LOAD			CR NO.	AMP RATING	POLE	TYPE	ITEM
					A	B	C	A	B	C					
EXISTING HEAT PUMP (W/SHIP 1.1)	E	40	3	1	3840	3840	352	390	2	20	1	L	LIGHTING		
"	E	-	-	3		3840		390	4	20	1	L	LIGHTING		
"	E	-	-	5		3840		296	6	20	1	L	LIGHTING		
EXISTING HEAT PUMP (W/SHIP 1.2)	E	40	3	7	3840	3840	660	300	8	20	1	E	210-36 - WORK-TOP REFRIGERATOR		
"	E	-	-	9		3840		300	10	20	1	E	EXISTING TOILET EXHAUST FAN		
"	E	-	-	11		3840		960	12	20	1	E	218 - (2) SANDWICH TOP REFRIGERATOR		
105 - TORTILLA WARMER	E	20	1	13	1800		1260		14	20	1	R	EXISTING RECEPTACLES		
106 - QUESADILLA TOASTER	E	20	1	15	1800		1536		16	20	1	E	225 - ICE MACHINE		
108 - QUESADILLA TOASTER	E	20	1	17		1800		324	18	20	1	E	235 - COOLER LIGHTS		
RELOCATED BASEBOARD HEATER (EBB 1.1)	E	20	2	19	625		428		20	20***	1	L	EMERALD LIGHTING		
"	E	-	-	21		625		75	22	20***	1	L	EXIT SIGNS		
RELOCATED BASEBOARD HEATER (EBB 1.2)	E	20	2	23		625		442	24	20	1	L	LIGHTING		
"	E	-	-	25	625		2400		26	25	1	E	405 - HOOD LIGHTS		
EXISTING BASEBOARD HEATER (EBB 1.3)	E	20	2	27	625		1800		28	20	1	R	530 - GENERAL DUTY RECEPTACLE		
"	E	-	-	29		625		1800	30	20	1	R	530 - GENERAL DUTY RECEPTACLE		
EXISTING KITCHEN EXHAUST FAN	E	25	3	31	2004		1800		32	20	1	R	530 - GENERAL DUTY RECEPTACLE		
"	E	-	-	33	2004		1800		34	20	1	R	535 - GENERAL DUTY RECEPTACLE		
"	E	-	-	35		2004		1800	36	20	1	R	535 - GENERAL DUTY RECEPTACLE		
PANEL: KP2	E	225	3	37	14601		234		38	20	1	L	LIGHTING		
"	E	-	-	39	13785		261		40	20	1	L	LIGHTING		
"	E	-	-	41		13139		1800	42	20	1	E	105 - TORTILLA WARMER		
CONNECTED LOAD (VA)					27335	26519	25873	7134	6162	7422					
CONNECTED LOAD PER PHASE (VA)					34469	32681	33295								

DEMAND		
TYPE	FACTOR	LOAD
L	1.00	2476
R	0.80	8208
M	1.00	0
E	1.00	87707
S	1.00	0
X	0.00	0

TOTAL CONNECTED LOAD 100445 VA
 TOTAL DEMAND LOAD 98393 VA
 TOTAL ESTIMATED DEMAND 273 AMPS

NOTE: WHERE INDICATED ABOVE:
 * MODIFY THE EXISTING PANEL TO INCLUDE AN ISOLATED GROUND BUS.
 ** PROVIDE G.F.I. CIRCUIT BREAKER
 *** PROVIDE LOCAL CODE APPROVED LOCK-OUT CIRCUIT BREAKER
 **** PROVIDE ARC FAULT CIRCUIT BREAKER

PANELBOARD

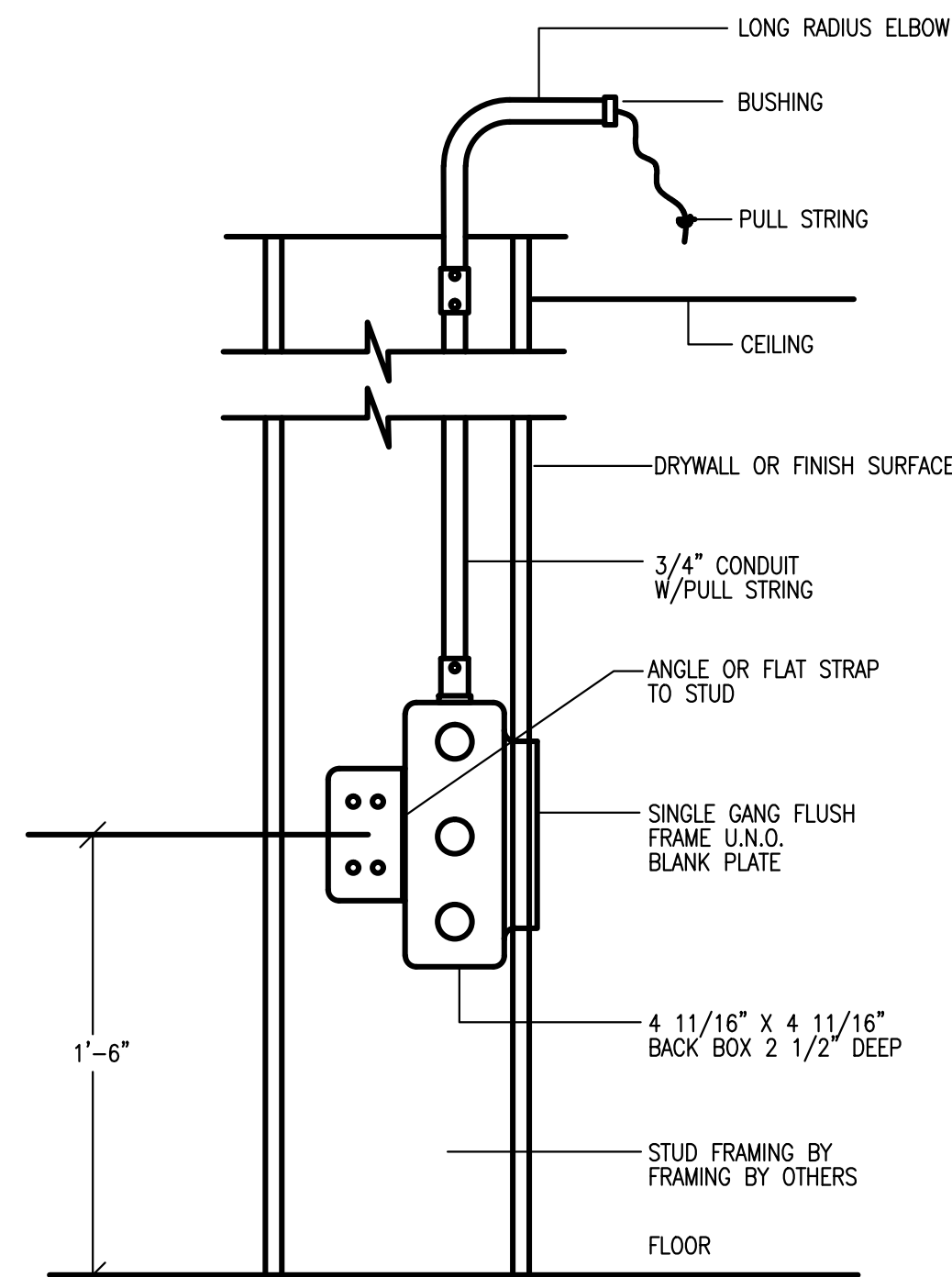
PANEL: KP2 TYPE: N00D BUS: 225A VOLTAGE: 120/ 208 3 PHASE 4 WIRE
 LOCATION: RM 106 MOUNTING: FLUSH MAIN: MAIN BREAKER NEUTRAL: ⇒ 100% 200% OPTIONS: ⇒ BOLT-ON CIRCUIT BREAKERS
 ENCLASURE: NEMA 1 ⇒ SURFACE ⇒ MAIN LUGS ONLY ⇒ EQUIPMENT ISOLATED ⇒ FEED THRU LUGS
 BUS TYPE: COPPER FEEDER: ⇒ TOP ⇒ BOTTOM GROUND: ⇒ EQUIPMENT ISOLATED ⇒ MONO-FLUSH TRIM SHUNT TRIP

ITEM	TYPE	AMP RATING	POLE	CR NO.	LEFT PHASE LOAD			RIGHT PHASE LOAD			CR NO.	AMP RATING	POLE	TYPE	ITEM
					A	B	C	A	B	C					
705 - ICE MAKER HEAD	E	20	2	1	1144		720		2	20	1	R	GENERAL RECEPTACLES		
710 - DRINK DISPENSER	E	20	1	5		1144		180	4	20	1	R	TOILET ROOM RECEPTACLE		
710.1 - BAG-IN-BOX DRINK CARBONATOR	E	20	1	7	1800		624		6	20	1	R	POS RECEPTACLES		
" SPARE	S	20	1	9		0		720	8	20	1	R	TELEPHONE BOARD OUTLET		
715 - ICE TEA BREWER	E	20	1	11		1784		708	10	20	3	E	235 - COOLER COMPRESSOR		
785 - DIGITAL TIMER	R	20	1	13	180		708		12	-	-	E	"		
815 - POS REGISTERS	E	25	1	15	2400		360		14	-	-	E	W/ST. W/2 DUMBWATER		
125 - CONVECTION THERMOLIZER	E	30	3	17	2640		2640		16	20	1	E	"		
" SPARE	E	-	-	19	2640		867		18	15	3	E	"		
"	E	-	-	21		2640		867	20	-	-	E	"		
205-60 - SANDWICH TOP REFRIGERATOR	E	20	1	23		1080		1596	22	-	-	E	MAU-1		
135 - CHIP WARMER	E	20	1	25	480		1596		24	20	3	E	"		
136 - CHIP WARMER	E	20	1	27	960		1596		26	-	-	E	"		
137 - CHIP WARMER	E	20	1	29		480		1280	28	-	-	E	220 - MERCHANTSER		
132 - MOBILE WARMING CABINET	E	20	1	31	1200		816		30	20	1	E	215-217 - WORK TOP FREEZER		
107 - MOBILE FOOD WARMER	E	20	1	33		1200		0	32	20	1	X	SPACE		
109 - 2 WELL HOT FOOD TABLE	E	20	1	35		1500		0	34	20	1	X	SPACE		
110 - HOT FOOD TABLE	E	25	2	37	1730		0		36	20	1	X	SPACE		
"	E	-	-	39		1730		0	38	20	1	X	SPACE		
"	X	20	1	41		0		0	40	20	1	X	SPACE		
CONNECTED LOAD (VA)					9174	10074	8108	5427	3711	6031					
CONNECTED LOAD PER PHASE (VA)					14601	13785	13139								

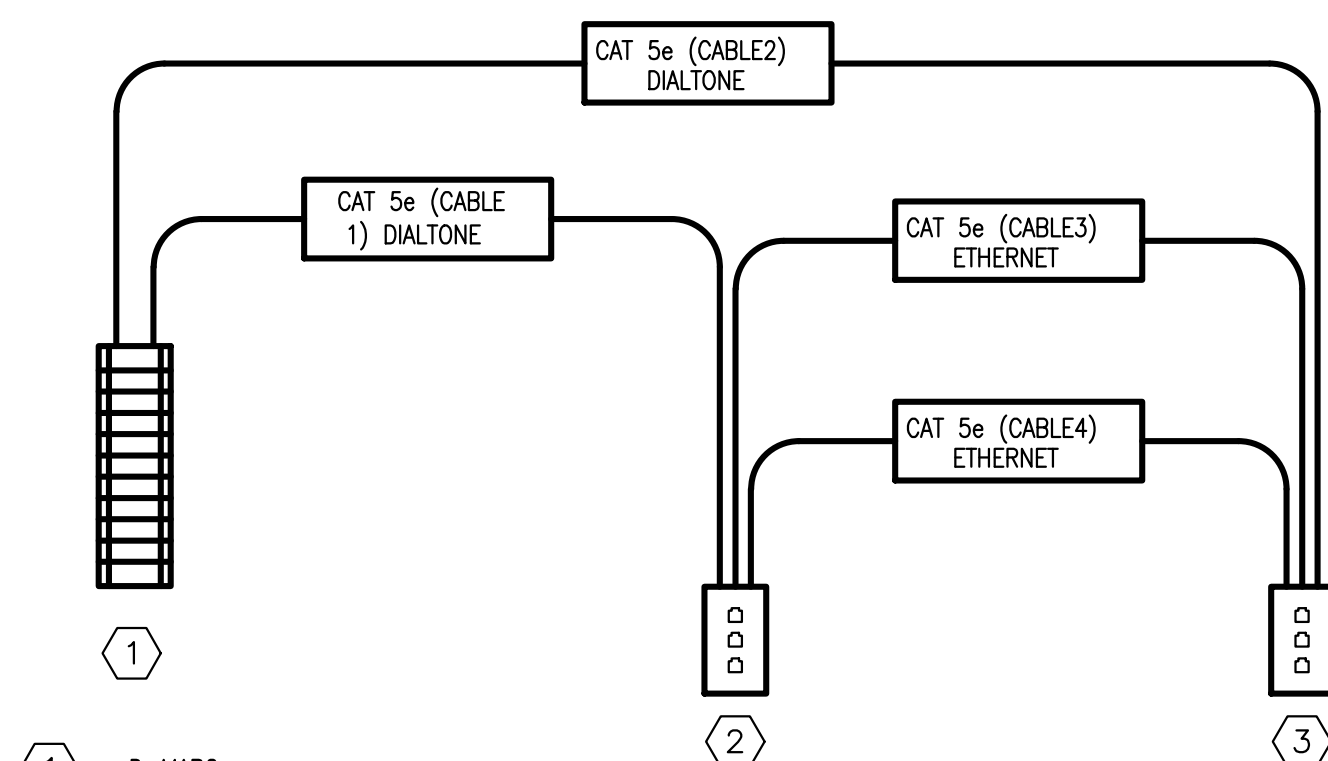
DEMAND		
TYPE	FACTOR	LOAD
L	1.00	0
R	0.80	1920
M	1.00	0
E	1.00	39125
S	1.00	0
X	0.00	0

TOTAL CONNECTED LOAD 41525 VA
 TOTAL DEMAND LOAD 41045 VA
 TOTAL ESTIMATED DEMAND 114 AMPS

NOTE: WHERE INDICATED ABOVE:
 * MODIFY THE EXISTING PANEL TO INCLUDE AN ISOLATED GROUND BUS.
 ** PROVIDE G.F.I. CIRCUIT BREAKER
 *** PROVIDE LOCAL CODE APPROVED LOCK-OUT CIRCUIT BREAKER
 **** PROVIDE ARC FAULT CIRCUIT BREAKER

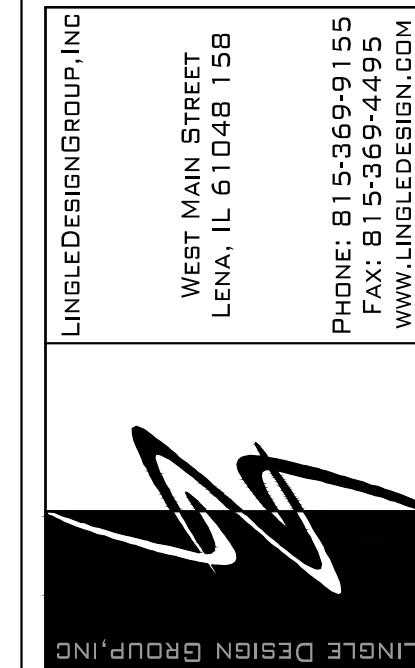


2 VOICE / DATA OUTLET DETAIL
E4.0 NO SCALE:



- 1 D-MARC
- 2 OFFICE WALL PLATE
 OFFICE WALL PLATE SHOULD BE TERMINATED WITH THE FOLLOWING JACK(S):
 LINE 1 PAIR 1 = VOICE PAIR 2 = FAX PAIR 3 = OPEN PAIR 4 = OPEN
 LINE 3 PAIR 1 = ETHERNET T568B PAIR 2 = ETHERNET T568B PAIR 3 = ETHERNET T568B PAIR 4 = ETHERNET T568B
 LINE 4 PAIR 1 = ETHERNET T568B PAIR 2 = ETHERNET T568B PAIR 3 = ETHERNET T568B PAIR 4 = ETHERNET T568B
- 3 POS WALL PLATE
 POS WALL PLATE SHOULD BE TERMINATED WITH THE FOLLOWING JACK(S):
 LINE 1 PAIR 1 = VOICE PAIR 2 = FAX PAIR 3 = OPEN PAIR 4 = ADT
 LINE 3 PAIR 1 = ETHERNET T568B PAIR 2 = ETHERNET T568B PAIR 3 = ETHERNET T568B PAIR 4 = ETHERNET T568B
 LINE 4 PAIR 1 = ETHERNET T568B PAIR 2 = ETHERNET T568B PAIR 3 = ETHERNET T568B PAIR 4 = ETHERNET T568B

3 TWO LINE JACK SET-UP
E4.0 NO SCALE:



LINGLE DESIGN GROUP, INC.
 WEST MAIN STREET
 LEVIA, IL 61048-1156
 PHONE: 815-369-9155
 FAX: 815-369-4495
 WWW.LINGLEDESIGN.COM

1408 Reed Street, Suite 100
 Naperville, Illinois 60563-6004
 LARSON ENGINEERING, INC.
 U.S. Lic. No. 01-0000044
 ILL. Comm. No. 2-000046-000
 ©RIGHT © 2010

Larson Engineering Inc.
 © ALL DRAWINGS AND WRITTEN MATERIAL CONTAINED HEREIN ARE THE PROPERTY OF THE ARCHITECT. THEY MAY NOT BE REPRODUCED, REUSED, OR DISCLOSED IN ANY MANNER WITHOUT WRITTEN AUTHORIZATION FROM THE ARCHITECT.



20 E. Chicago Avenue
 Chicago, IL 60611-2009

REVISIONS:
 # DATE DESCRIPTION
 1 1/8/10 ISSUED FOR PERMIT

PROJECT NUMBER: 09-116
 DRAWN BY: THM
 CHECKED BY: JMD

SHEET TITLE:
ELECTRICAL RISER AND SCHEDULES

SHEET NUMBER:
E4.0