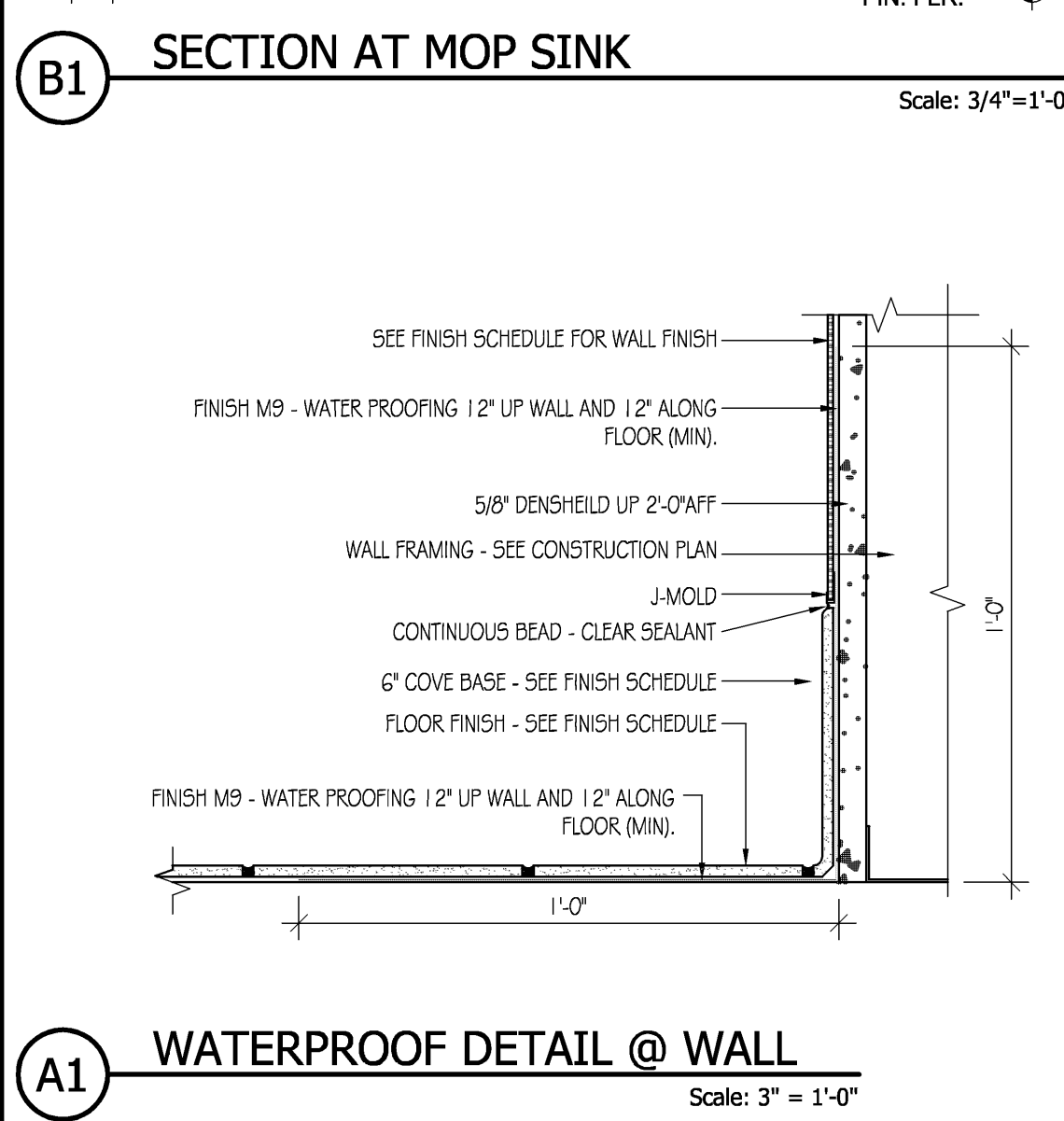
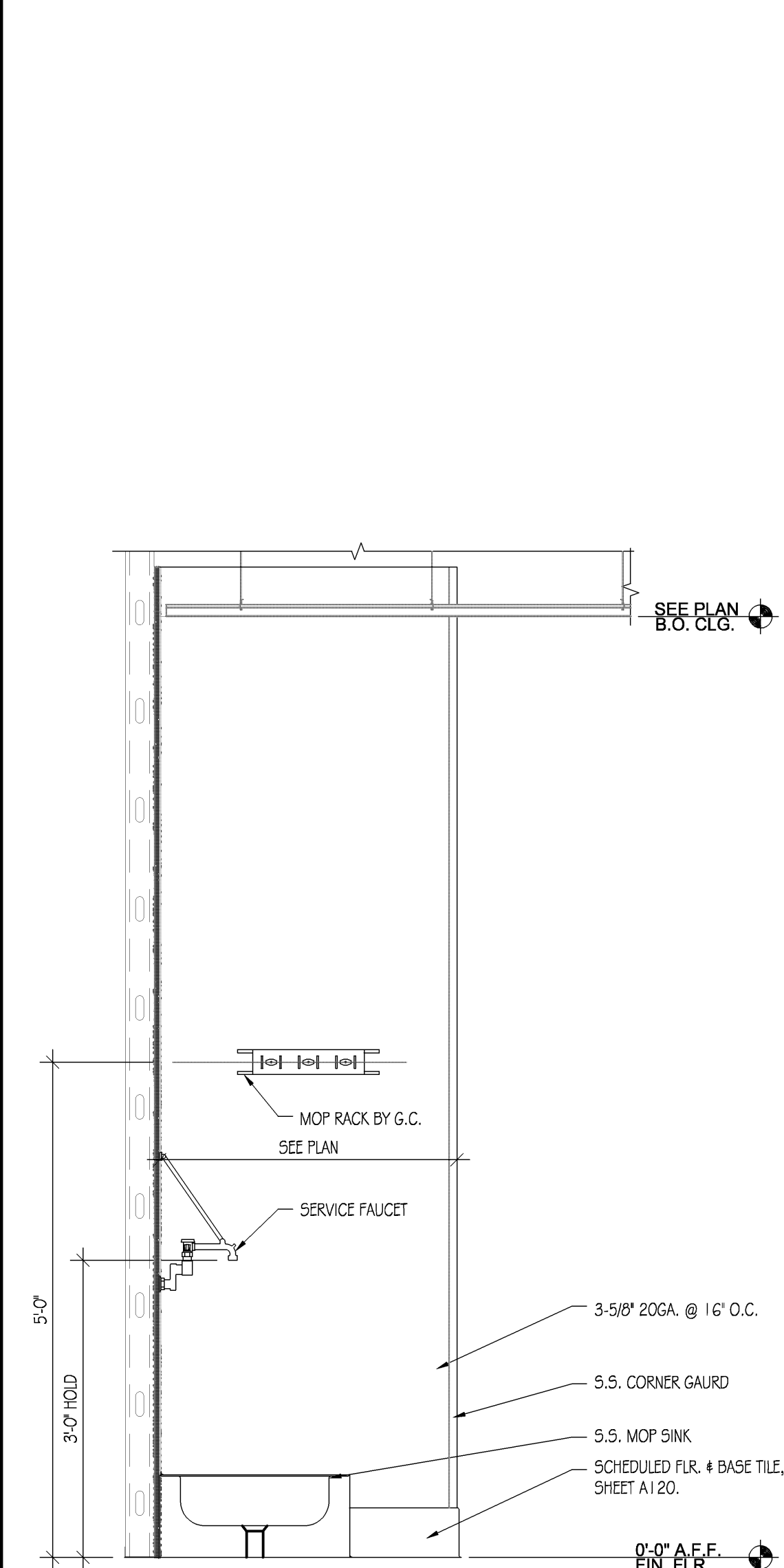
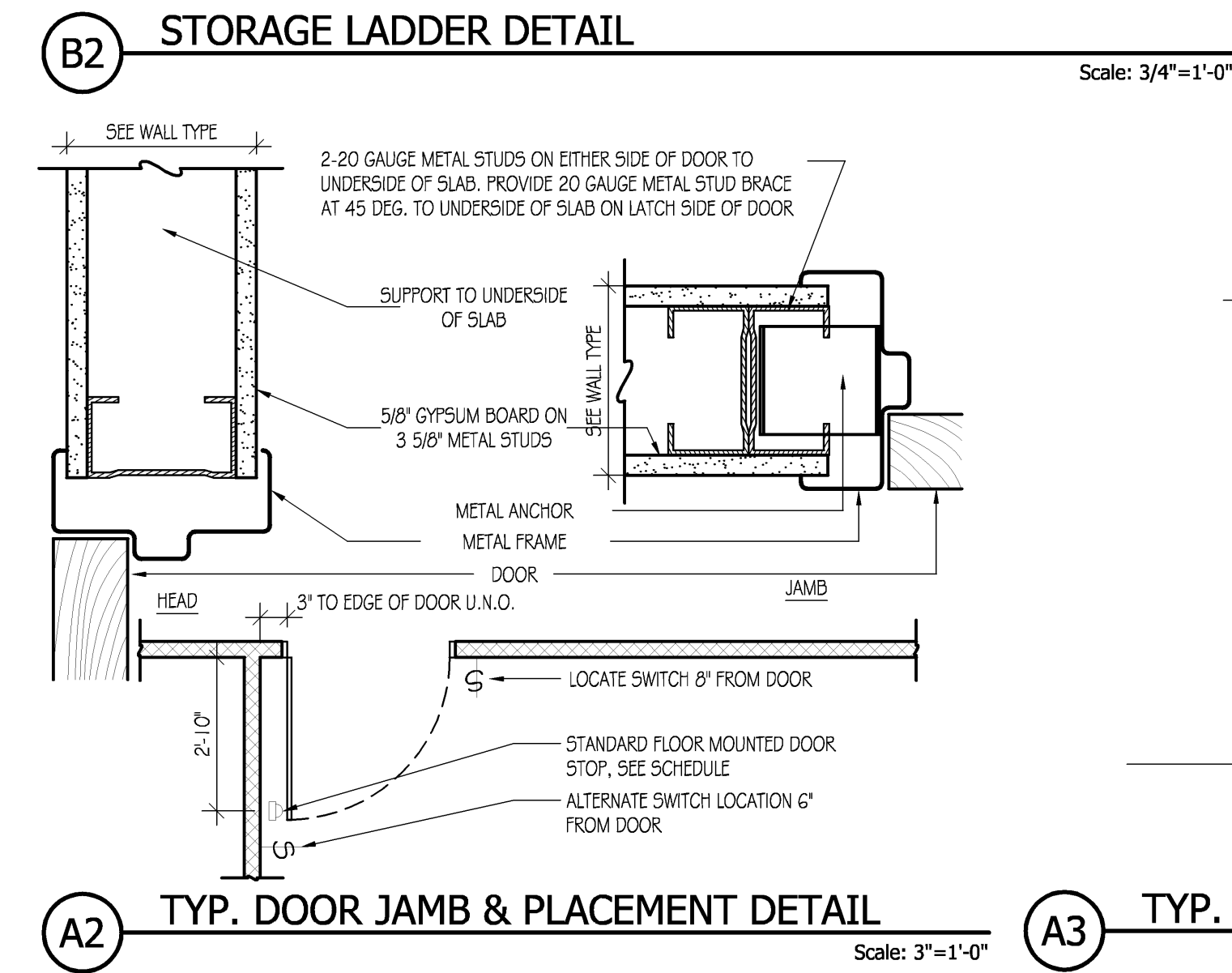
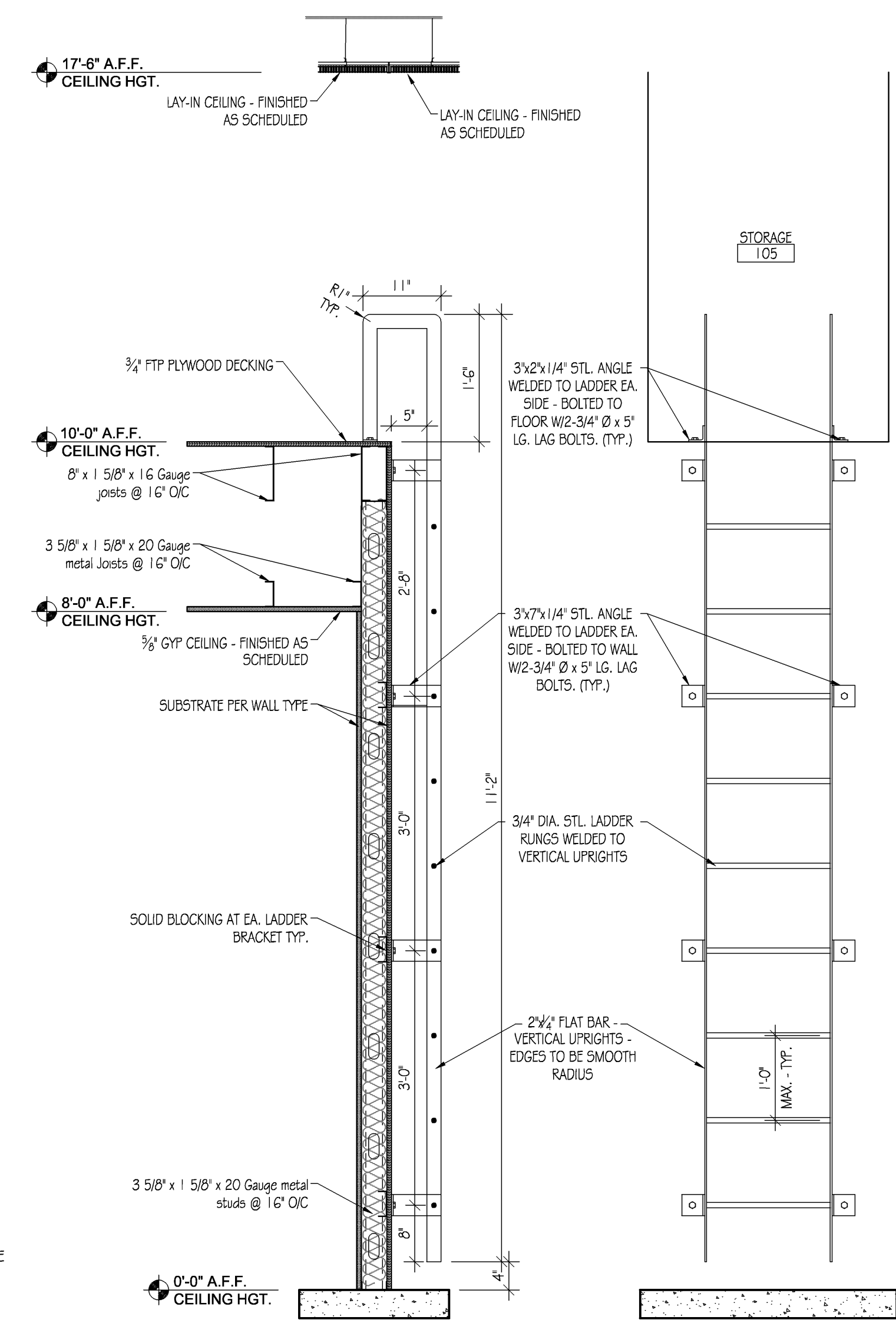
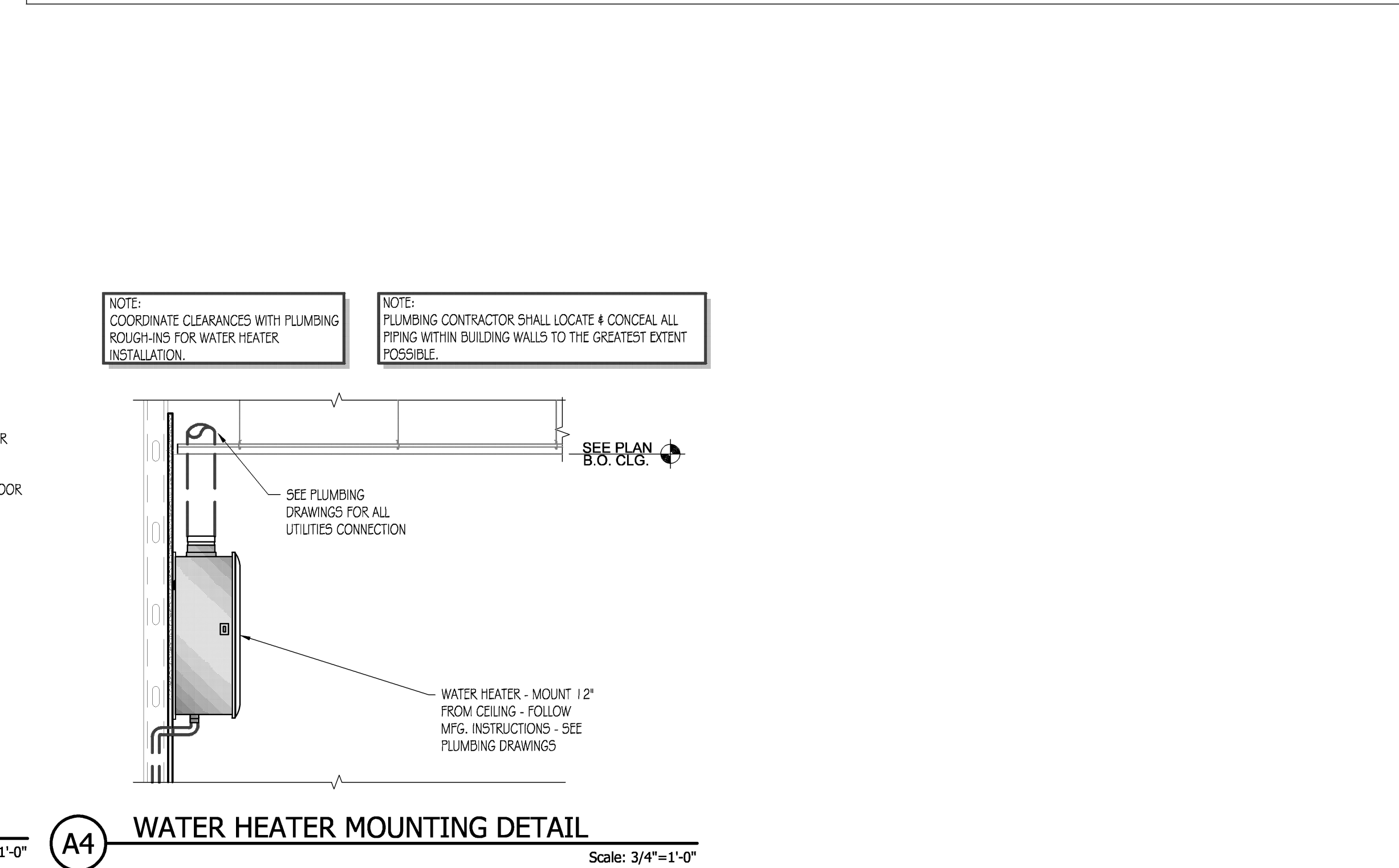
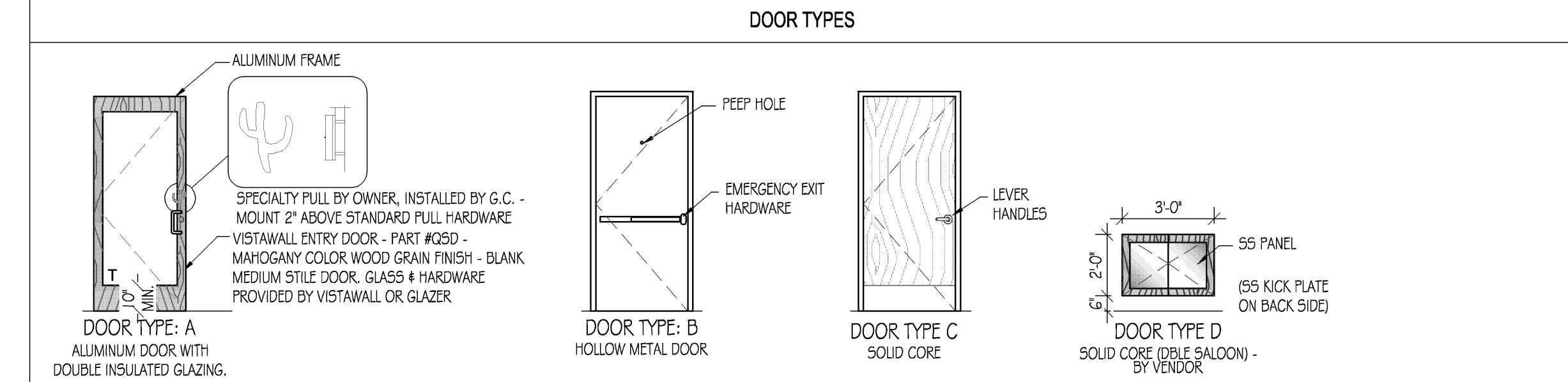


DOOR SCHEDULE									
DOOR	MARK	ROOM	SIZE	TYPE	MATL	FINISH	FRAME	HARDWARE SET	REMARKS
	100	BREEZEWAY	3'-0" x 7'-0" x 1'-3/4"	A	VISTAWALL ALUMIN	#050 - MAHOGANY	ALUMIN MATCH EXISTING	1	SPECIALTY PULL BY OWNER, INSTALLED BY G.C. - MOUNT 2" ABOVE STANDARD PULL HARDWARE
	102	SERVICE AREA	3'-6" x 2'-0" x 1" (DBL DR)	D	BY VENDOR	BY VENDOR	WOOD/ ADJACENT WALL MATCH ADJACENT	6	DOUBLE SALOON DOOR PROVIDED BY VENDOR, INSTALLED BY CONTRACTOR - COORDINATE W/ SHOP DRAWINGS
	106	REAR SERVICE	3'-0" x 7'-0" x 1'-3/4"	B	EXISTING	EXISTING	EXISTING	4	PAINT WITH SEMI GLOSS PAINT - EXISTING
	109	MENS RESTROOM	3'-0" x 7'-0" x 1'-3/4"	C	BIRCH	51 (STAIN)	HOLLOW METAL BLACK, SEMI GLOSS	3	
	110	WOMENS RESTROOM	3'-0" x 7'-0" x 1'-3/4"	C	BIRCH	51 (STAIN)	HOLLOW METAL BLACK, SEMI GLOSS	3	

NOTE: EQUIVALENT PRODUCTS FROM OTHER MANUFACTURERS MAY BE SUBSTITUTED IF APPROVED BY THE OWNER.

HARDWARE TYPES									
HARDWARE SET NO. 1 - ENTRY DOORS - (V.I.F. - PROVIDE IF NOT EXISTING)					HARDWARE SET NO. 4 - REAR DOORS (V.I.F. - PROVIDE IF NOT EXISTING)				
1 EA.	FULL MORTISE, CONTINUOUS HINGE # 780-224 FINISH TO MATCH STOREFRONT	BY G.C.	* VERIFY EXISTING HWDR MEETS OR EXCEEDS THE FOLLOWING CRITERIA - ALONG WITH ALL STATE AND LOCAL CODES		1 EA.	VON DUFRIN #98 NL-OP x 110 MD-NL x 10B	HAGER		
1 EA.	CODE REQUIRED PANIC HARDWARE - BY G.C.				1 EA.	#4041 - CUSH, FINISH - AL	LCN		
1 EA.	PUSH PAD EXIT DEVICE - VON DUFRIN #98 NL-OP x 110 MD-NL x 10B	VON DUFRIN			1 EA.	#1756 - 200" DOOR VIEWER - BRONZE (PROVIDE IF NOT EXISTING)	BY G.C.		
1 EA.	DOOR PULL KAWNEER CO-9 (OR EQUAL) - COLOR TO MATCH STOREFRONT	BY G.C.			1 EA.	DETEX EXT ALARM #EA-500 (FOR KITCHEN BACK DOOR) (COORDINATE W/ QDOBA CONSTRUCTION MANAGER)	BY G.C.		
1 EA.	CUSTOM PULL, INSTALLED BY GENERAL CONTRACTOR	BY OWNER			1 EA.	VON DUFRIN 98-NL-L - FINISH TO MATCH EXISTING	VON DUFRIN		
1 EA.	CLOSER #4041 - CUSH - FINISH TO MATCH STOREFRONT	LCN			1 EA.	RIM CYLINDER-80-129 - FINISH TO MATCH EXISTING	BY G.C.		
1 EA.	SIGNAGE "DOOR TO REMAIN UNLOCKED DURING BUSINESS HOURS"	BY G.C.			1 EA.	PROVIDE CONSTRUCTION AND PERMANENT CORES AS REQUIRED	BY G.C.		
1 EA.	SIGNAGE "MAXIMUM OCCUPANCY", POST AT MAIN ENTRY	BY G.C.			1 EA.	CONSTRUCTION MARKER FOR STORAGE LOCATIONS	BY G.C.		
1 EA.	THRESHOLD TO MATCH DOOR TYPE AND FLOOR CONDITION (PROVIDE POSITIVE SEAL AGAINST AIR PENETRATION)	BY G.C.			HARDWARE SET NO. 5 - VESTIBULE DOORS - (V.I.F. - PROVIDE IF NOT EXISTING)				
1 EA.	PROVIDE DOOR SWEEP TO MATCH THRESHOLD (MATCH STOREFRONT)	BY G.C.			1 EA.	FULL MORTISE, CONTINUOUS HINGE # 780-224 FINISH TO MATCH STOREFRONT	BY G.C.		
1 EA.	RIM CYLINDER-80-129 - FINISH TO MATCH STOREFRONT	SCHLAGE			1 EA.	DOOR PULL KAWNEER CO-9 (OR EQUAL) - COLOR TO MATCH STOREFRONT	BY G.C.		
HARDWARE SET NO. 2 - OFFICE					HARDWARE SET NO. 6 - HALF HEIGHT DOOR				
1 EA.	#B8-1191, FINISH US10B OIL RUBBED BRONZE	HAGER			1 EA.	CLOSER #4041 - CUSH - FINISH TO MATCH STOREFRONT	LCN - BY G.C.		
1 EA.	LEVER-SET GRADE, PREPARED FOR BEST CORE, FINISH US10B OIL RUBBED BRONZE, AL 53-BD W SATURN TRIM	SCHLAGE			1 EA.	DOOR STOP, #252F, FINISH US10B OIL RUBBED BRONZE	HAGER		
1 EA.	DOOR STOP, #252F, FINISH US10B OIL RUBBED BRONZE	HAGER							
2 EA.	8" KICKPLATE, FINISH US10B OIL RUBBED BRONZE EACH SIDE	BY G.C.							
1 EA.	CLOSER: 4041 x DKBR2	BY G.C.							
HARDWARE SET NO. 3 - RESTROOM DOORS PRIVACY SET									
1 EA.	#B8-1191, FINISH US10B OIL RUBBED BRONZE	HAGER							
1 EA.	AL-405 x SATURN FINISH (PRIVACY HWDR) x US-10B	SCHLAGE							
1 EA.	#4041 - CUSH x DKBR2	LCN							
1 EA.	WOMENS - SIGN: "WOMEN" (SEE SIGN ON SHEET A5)	BY G.C.							
1 EA.	MENS - SIGN: "MEN" (SEE SIGN DTL ON SHEET A5)	BY G.C.							
2 EA.	8" KICKPLATE, FINISH US10B OIL RUBBED BRONZE EACH SIDE	BY G.C.							

- ### HARDWARE NOTES
- ALL LOCK SETS SHALL HAVE A LEVER HANDLE UNLESS NOTED OTHERWISE.
 - HWDR SUPPLIER SHALL PROVIDE SHOP DRAWINGS AND CUT SHEETS OF THE PROPOSED HWDR TO THE OWNER FOR REVIEW.
 - AT ALL EXISTING DOORS NOT IN PUBLIC AREAS, THE CONTRACTOR SHALL VERIFY THAT EXISTING HWDR HAS ALL FUNCTIONS LISTED IN THE HWDR SETS AND IS IN PROPER WORKING ORDER.
 - EXIT HARDWARE: OPEN FROM INSIDE WITH ONE MOTION, NO SPECIAL KNOWLEDGE OR EFFORT. THUMBURNS OR SEPARATE DEADBOLTS ARE NOT ALLOWED. NO KEYED LOCKS EXCEPT AT FRONT ENTRANCE (IF ONE DOOR OR A SINGLE PAIR).
 - QDOBA INTENDS TO IMPLEMENT A UNIFIED KEY MANAGEMENT CONTROL SYSTEM THROUGHOUT ITS FACILITIES. AS SUCH, ANY CYLINDERS/CORES AND KEYS REQUIRED FOR A FACILITY SHALL BE OWNER SUPPLIED AS REQUIRED. CONTRACTOR IS REQUIRED TO INSURE THAT ANY OPENING SPECIFIED TO BE OPERABLE BY MECHANICAL KEY SHALL BE CONFIGURED TO ACCEPT INDUSTRY STANDARD, 7-PIN, SMALL FORMAT INTERCHANGEABLE CORES (SFIC) (BEST, ARROW, FALCON, COMPATIBLE). OPENINGS SPECIFIED FOR NO INGRESS STRIPPING @ ALL EXTERIOR DOORS.
 - TENANT G.C. SHALL PROVIDE WEATHER STRIPPING @ ALL EXTERIOR DOORS.
 - TENANT G.C. SHALL PROVIDE SWEEP STRIP @ ALL EXTERIOR DOORS.



LINGLEDESIGNGROUP, INC
WEST MAIN STREET
LENA, IL 61048 158
PHONE: 815-369-9155
FAX: 815-369-4495
WWW.LINGLEDESIGN.COM

ALL DRAWINGS AND WRITTEN MATERIAL CONTAINED HEREIN ARE THE PROPERTY OF THE ARCHITECT. THEY MAY NOT BE REPRODUCED, COPIED, REUSED, OR DISCLOSED IN ANY MANNER WITHOUT WRITTEN AUTHORIZATION FROM THE ARCHITECT.

Qdoba MEXICAN GRILL
20 E. Chicago Avenue
Chicago, IL 60611-2009

REVISIONS:
DATE: 1/8/10 ISSUED FOR PERMIT
1/18/10 ISSUED FOR PERMIT

PROJECT NUMBER: 08-116
DRAWN BY: SRM
CHECKED BY: JTC

SHEET TITLE:
DOOR SCHEDULE & DETAILS

SHEET NUMBER:
A400