

HOOD INFORMATION

| HOOD NO. | MODEL | LENGTH | MAX. COOKING TEMP. | EXHAUST PLENUM RISER(S) | | | | | SUPPLY PLENUM RISER(S) | | | | | HOOD CONSTRUCTION | HOOD CONFIG. | | | |
|----------|-----------------|----------|--------------------|-------------------------|-------|-------|------|------|------------------------|----------------|-------|-------|------|-------------------|----------------------|----------------------|------------|-------|
| | | | | TOTAL EXH. CFM | WIDTH | LENG. | DIA. | CFM | S.P. | TOTAL SUP. CFM | WIDTH | LENG. | DIA. | | CFM | S.P. | END TO END | ROW |
| 1 | 5430 ND-2-PSP-F | 9' 6.00" | 450 Deg. | 3800 | 10" | 36" | | 3800 | -0.627' | | 2470 | | | | | 430 SS Where Exposed | ALONE | ALONE |
| 2 | 4230 ND-2 | 3' 0.00" | 450 Deg. | 525 | 7" | 7" | | 525 | -0.146' | | 0 | | | | 430 SS Where Exposed | ALONE | ALONE | |

HOOD INFORMATION

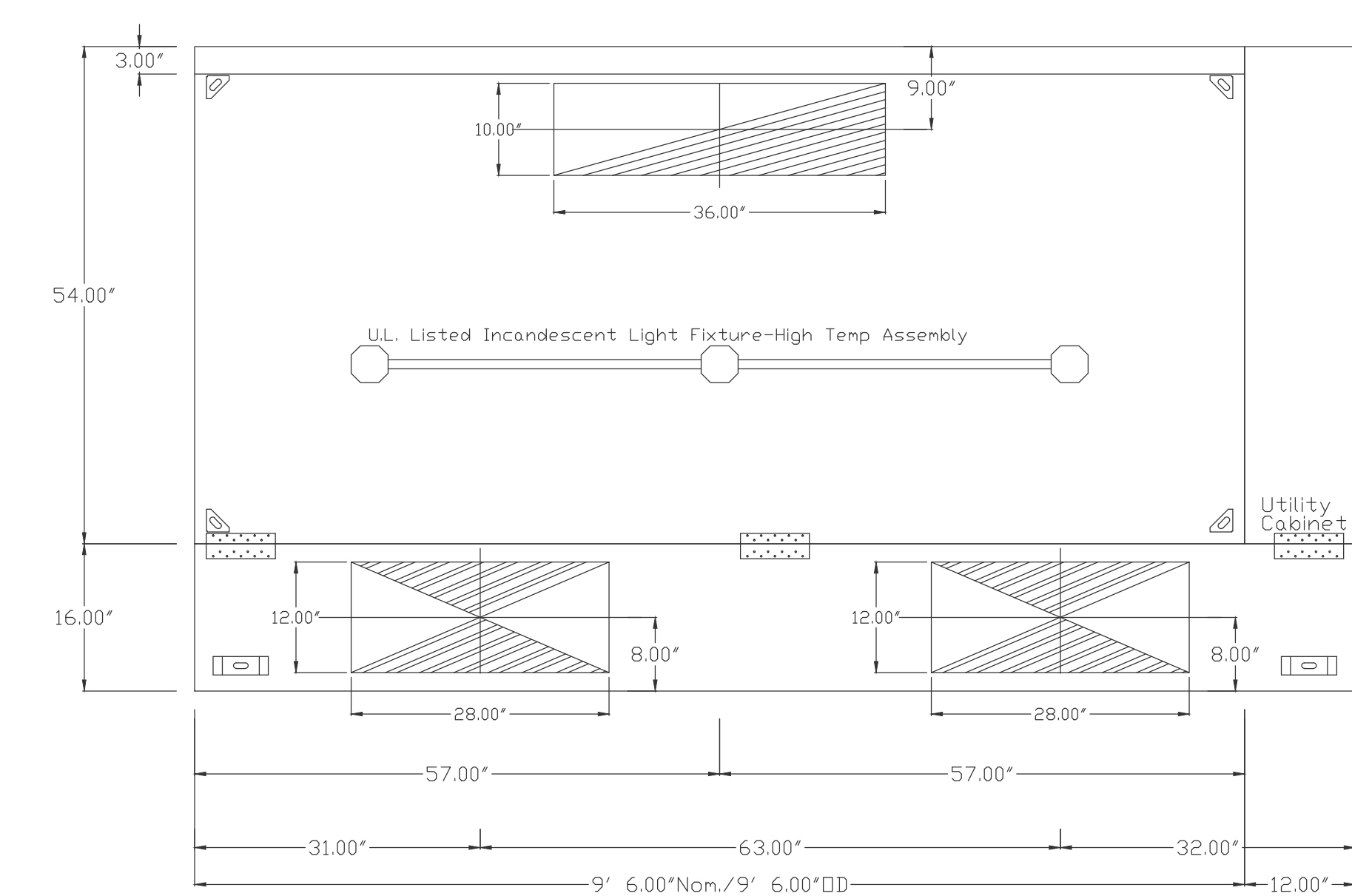
| HOOD NO. | FILTER(S) | | | | LIGHT(S) | | | UTILITY CABINET(S) | | | | FIRE SYSTEM PIPING | HOOD HANGING WGT | | |
|----------|------------------------|------|--------|--------|----------|-------------------------|------------|--------------------|------------|---------|--------------------|--------------------|------------------|-------------------|----------|
| | TYPE | QTY. | HEIGHT | LENGTH | QTY. | TYPE | WIRE GUARD | LOCATION | TYPE | SIZE | ELECTRICAL MODEL # | | | SWITCHES QUANTITY | LOCATION |
| 1 | SS Baffle with Handles | 2 | 20" | 16" | 3 | Incandescent Light Fixt | NO | Right | Ansul R102 | 3.0/1.5 | 311110FP | 1 Light 1 Fan | Outside | YES | 674 LBS |
| 2 | SS Baffle with Handles | 2 | 20" | 16" | 1 | Incandescent Light Fixt | NO | | | | | | | YES | 187 LBS |

HOOD OPTIONS

| HOOD NO. | OPTION |
|----------|---|
| 1 | FIELD WRAPPER 10.00" High Front, Left, Right |
| | BACKSPLASH 80.00" High X 126.00" Long 430 SS |
| | RIGHT QUARTER END PANEL 23" Top Width, 0" Bottom Width, 23" High 430 SS |
| | LEFT QUARTER END PANEL 23" Top Width, 0" Bottom Width, 23" High 430 SS |
| 2 | FIELD WRAPPER 10.00" High Front, Left, Right |
| | BACKSPLASH 80.00" High X 36.00" Long 430 SS |

PERFORATED SUPPLY PLENUM(S)

| HOOD NO. | POS. | LENGTH | WIDTH | HEIGHT | RISER(S) | | | | |
|----------|-------|--------|-------|--------|----------|-------|------|------|--------|
| | | | | | WIDTH | LENG. | DIA. | CFM | S.P. |
| 1 | Front | 126" | 16" | 6" | 12" | 28" | | 1235 | 0.165' |
| | | | | | 12" | 28" | | 1235 | 0.165' |



PLAN VIEW - Hood #1
9' 6.00" LONG 5430ND-2-PSP-F

CUSTOMER APPROVAL TO MANUFACTURE:

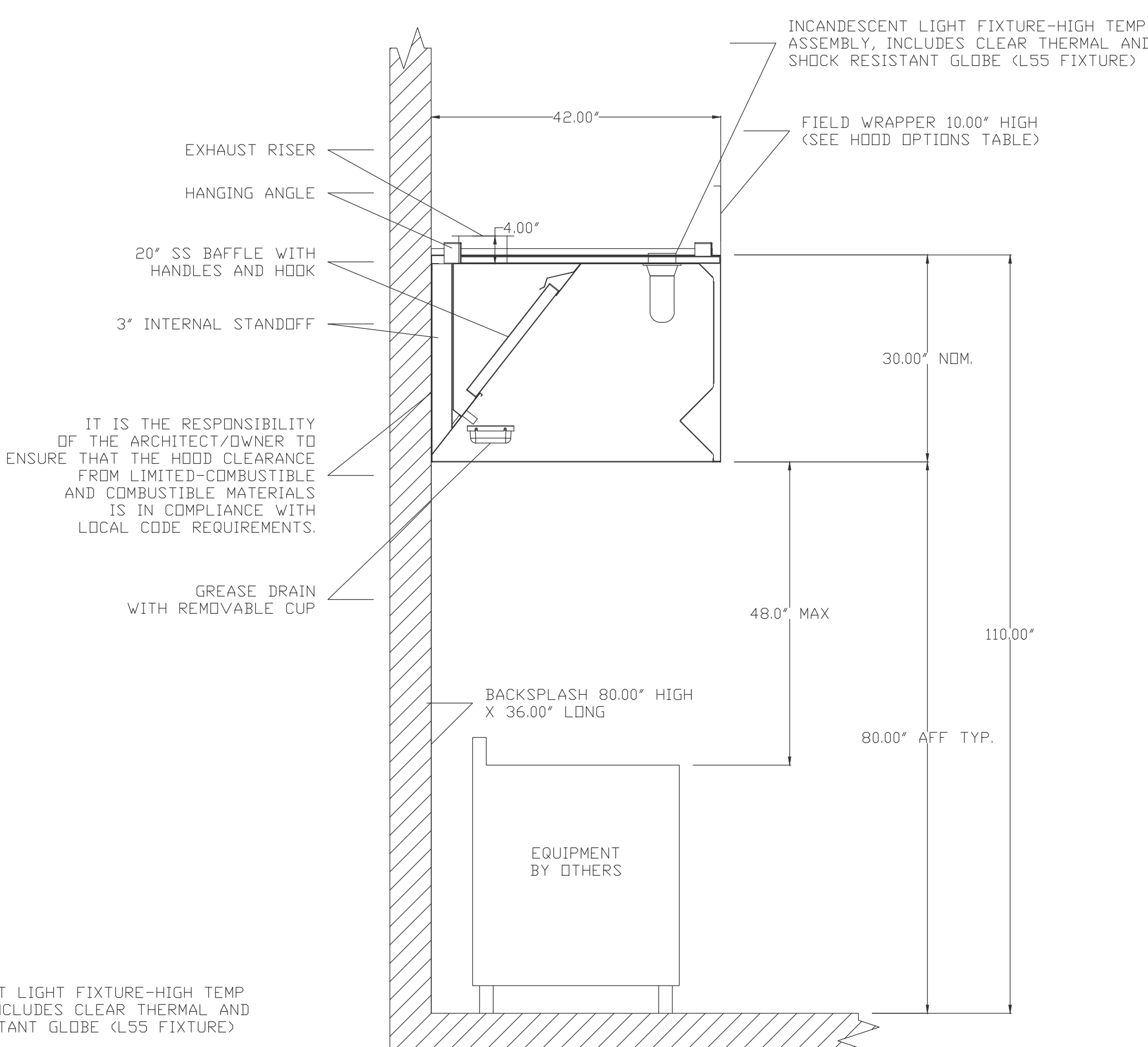
Approved as Noted

Approved with NO Exception Taken

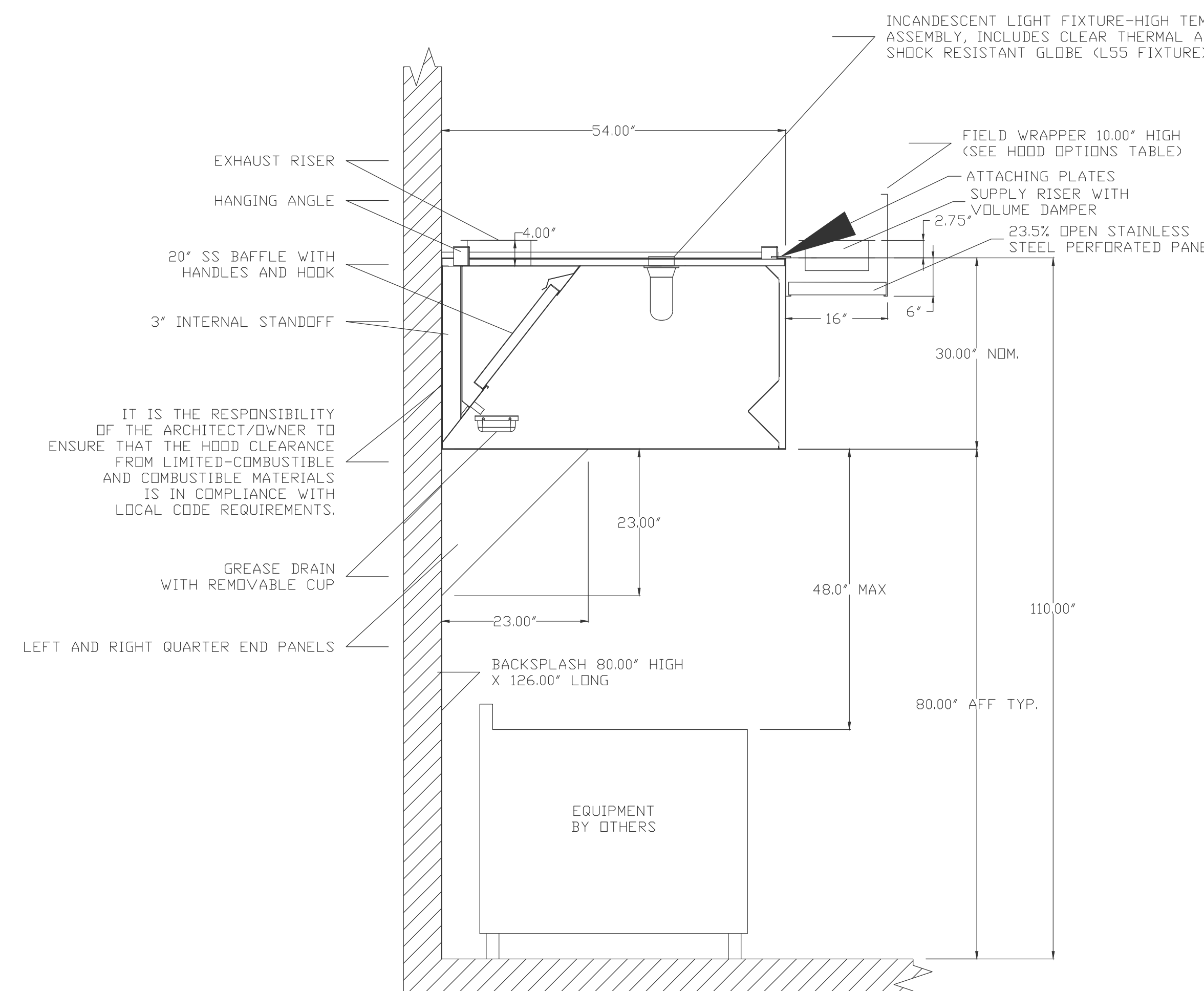
Revise and Resubmit

SIGNATURE _____

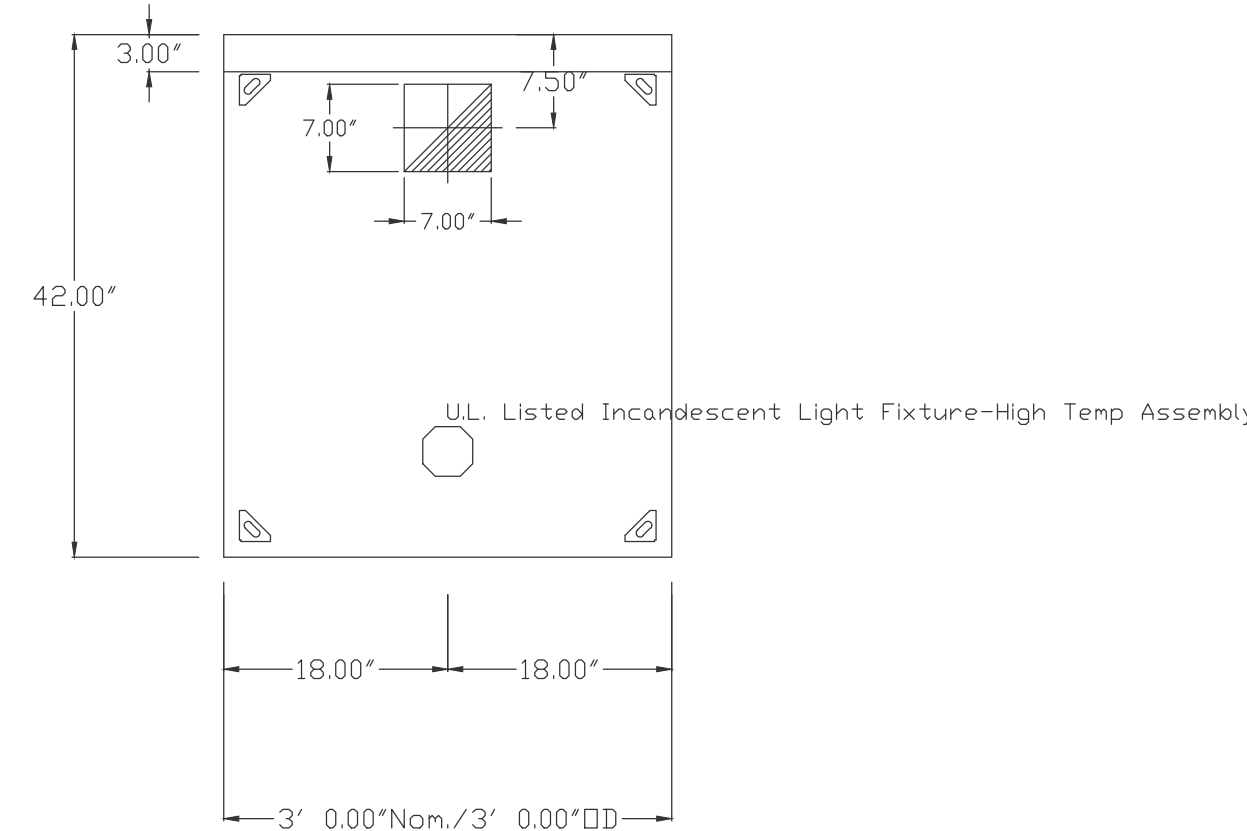
Your Title _____ Date _____



SECTION VIEW - MODEL 4230ND-2

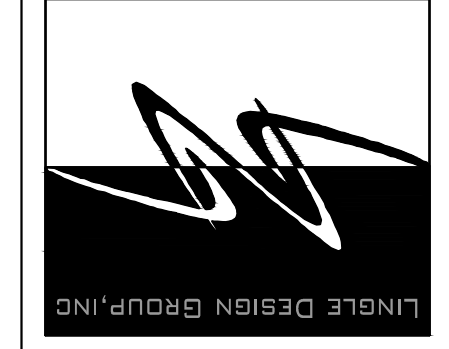


SECTION VIEW - MODEL 5430ND-2-PSP-F HOOD - #1



PLAN VIEW - Hood #2
3' 0.00" LONG 4230ND-2

LINGLEDESIGNGROUP, INC.
WEST MAIN STREET
LEVA, IL 61048-1156
PHONE: 815-369-9155
FAX: 815-369-4495
WWW.LINGLEDESIGN.COM



148 Reed Street, Suite 100
Naperville, Illinois 60563-6003
Lingle Design Group, Inc.
LUG. Lic. No. 07-0000044
LUL. Lic. No. 2-000004000
COPYRIGHT © 2010
Larson Engineering Inc.

© ALL DRAWINGS AND WRITTEN MATERIAL CONTAINED HEREIN ARE THE PROPERTY OF THE ARCHITECT. THEY MAY NOT BE REPRODUCED, REUSED, OR DISCLOSED IN ANY MANNER WITHOUT WRITTEN AUTHORIZATION FROM THE ARCHITECT.

Qdoba MEXICAN GRILL
20 E. Chicago Avenue
Chicago, IL 60611-2009

| REVISIONS # | DATE | DESCRIPTION | ISSUED FOR PERMIT |
|-------------|------|-------------|-------------------|
| | | | |

PROJECT NUMBER: 09-116
DRAWN BY: LEM
CHECKED BY: JKN

SHEET TITLE:
CAPTIVE AIRE HOOD DETAIL

SHEET NUMBER:
M3.0

X:\2009 MEP\2409046.000_Lingle Design Group, Inc.-Qdoba Mexican Grill-Chicago IL Drawings\2409046-M2.LDW, Copyright ©2009 Larson Engineering, Inc., Plotted: 1/8/2010 4:18 PM, m249