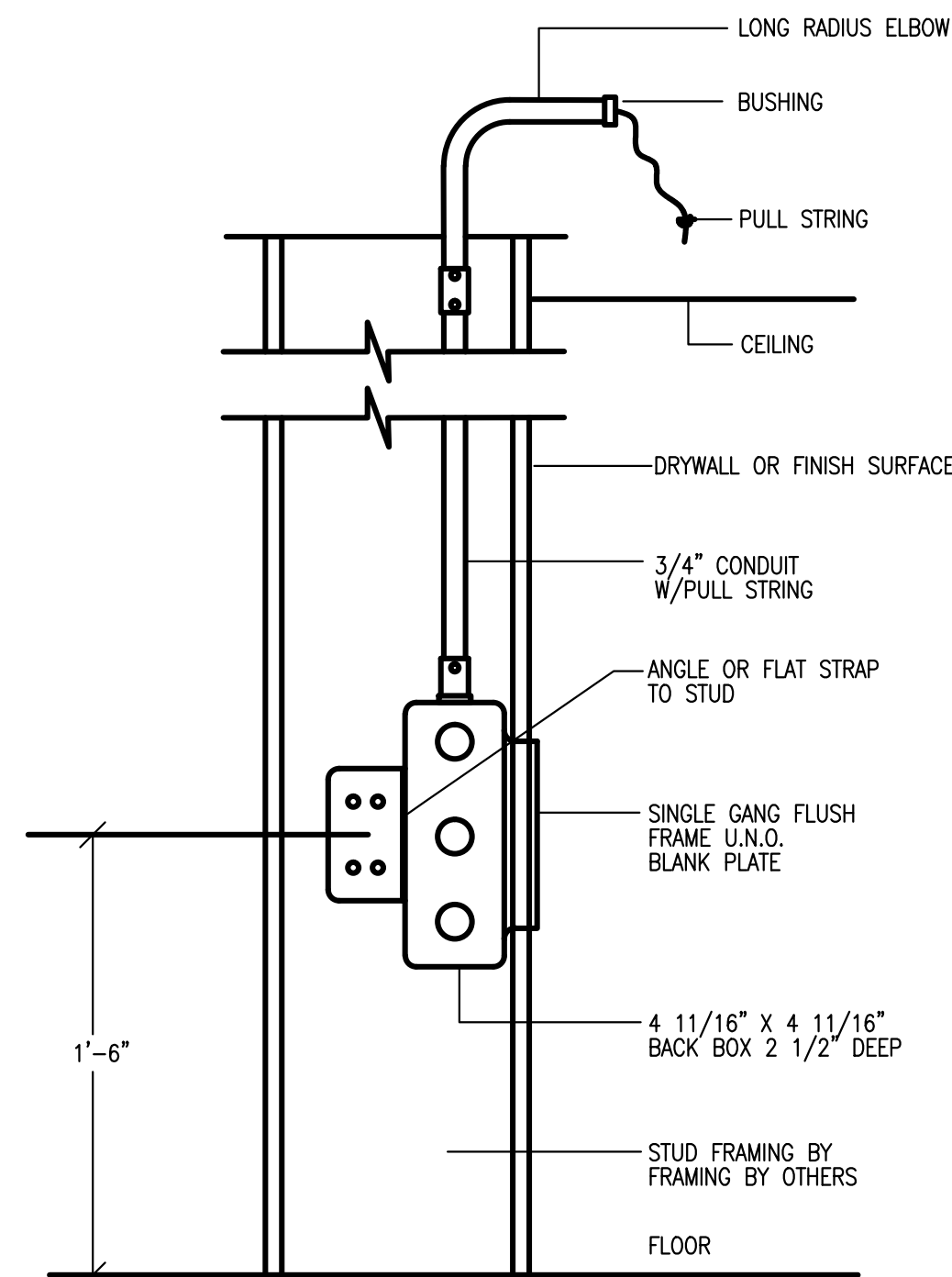
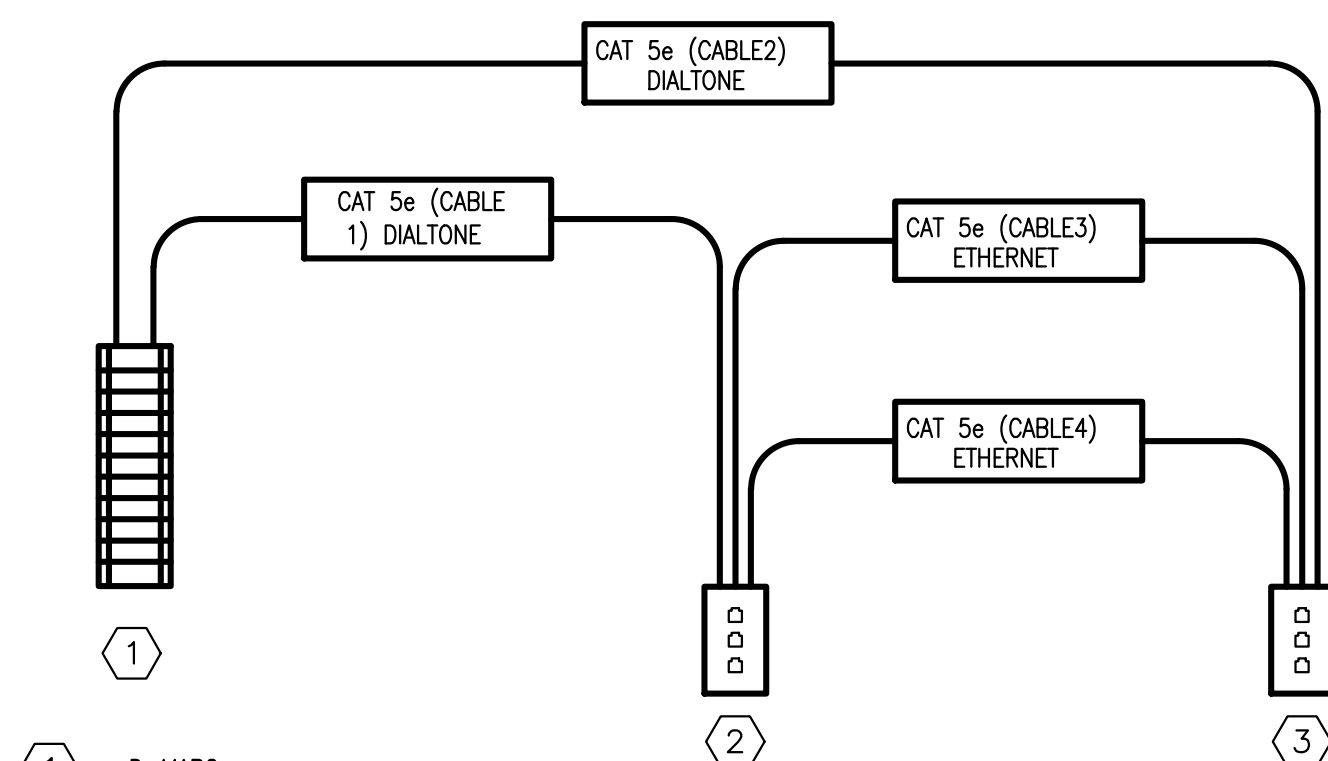


**1 ELECTRICAL RISER DIAGRAM**  
E4.0 NO SCALE:



**2 VOICE / DATA OUTLET DETAIL**  
E4.0 NO SCALE



- 1** D-MARC
- 2** OFFICE WALL PLATE  
OFFICE WALL PLATE SHOULD BE TERMINATED WITH THE FOLLOWING JACK(S):
- |                |                         |                         |
|----------------|-------------------------|-------------------------|
| LINE 1         | LINE 3                  | LINE 4                  |
| PAIR 1 = VOICE | PAIR 1 = ETHERNET T568B | PAIR 1 = ETHERNET T568B |
| PAIR 2 = FAX   | PAIR 2 = ETHERNET T568B | PAIR 2 = ETHERNET T568B |
| PAIR 3 = OPEN  | PAIR 3 = ETHERNET T568B | PAIR 3 = ETHERNET T568B |
| PAIR 4 = OPEN  | PAIR 4 = ETHERNET T568B | PAIR 4 = ETHERNET T568B |
- 3** POS WALL PLATE  
POS WALL PLATE SHOULD BE TERMINATED WITH THE FOLLOWING JACK(S):
- |                |                         |                         |
|----------------|-------------------------|-------------------------|
| LINE 2         | LINE 3                  | LINE 4                  |
| PAIR 1 = VOICE | PAIR 1 = ETHERNET T568B | PAIR 1 = ETHERNET T568B |
| PAIR 2 = FAX   | PAIR 2 = ETHERNET T568B | PAIR 2 = ETHERNET T568B |
| PAIR 3 = OPEN  | PAIR 3 = ETHERNET T568B | PAIR 3 = ETHERNET T568B |
| PAIR 4 = ADT   | PAIR 4 = ETHERNET T568B | PAIR 4 = ETHERNET T568B |

**3 TWO LINE JACK SET-UP**  
E4.0 NO SCALE:

**PANELBOARD**

PANEL: EXISTING KP1 \* TYPE: NOOD BUS: 400A VOLTAGE: 120/ 208 3 PHASE 4 WIRE

LOCATION: RM 106 MOUNTING: FLUSH MAIN: MAIN BREAKER NEUTRAL: ⇒ 100% 200% OPTIONS: ⇒ BOLT-ON CIRCUIT BREAKERS ⇒ FEED THRU LUGS ⇒ MONO-FLUSH TRIM ⇒ SHUNT TRIP

ENCLOSURE: NEMA 1 FEEDER: ⇒ TOP ⇒ BOTTOM GROUND: ⇒ EQUIPMENT ⇒ ISOLATED

22,000 AIC

ITEM	TYPE	AMP RATING	POLE	CR. NO.	LEFT PHASE LOAD			RIGHT PHASE LOAD			CR. NO.	AMP RATING	POLE	TYPE	ITEM
					A	B	C	A	B	C					
EMUL LIGHTING	L	20	1	1	428			352			2	20	1	L	LIGHTING
EXIT SIGNS	L	20	1	3		75				390	4	20	1	L	LIGHTING
LIGHTING	L	20	1	5			442			296	6	20	1	L	LIGHTING
LIGHTING	L	20	1	7	234			660			8	20	1	E	210-36 - WORK-TOP REFRIGERATOR
LIGHTING	L	20	1	9		261			816		10	20	1	E	215-27 - WORK-TOP REFRIGERATOR
105 - TORTILLA WARMER	E	20	1	11			1800			960	12	20	1	E	218 - (2) SANDWICH TOP REFRIGERATOR
105 - TORTILLA WARMER	E	20	1	13	1800			1260			14	20	1	E	220 - MERCHANDISER
106 - QUESADILLA TOASTER	E	20	1	15		1800		1536			16	20	1	E	225 - ICE MACHINE
106 - QUESADILLA TOASTER	E	20	1	17			1800			324	18	20	1	E	235 - COOLER LIGHTS
107 - MOBILE FOOD WARMER	E	20	1	19	1200			3840			20	40	3	E	EXISTING HEAT PUMP
108 - 2 WELL HOT FOOD TABLE	E	20	1	21		1500			3840		22	-	-	E	
110 - HOT FOOD TABLE	E	25	2	23			1730		2400		26	25	1	E	405 - HOOD LIGHTS
EXISTING TOILET EXHAUST FAN	E	20	1	27		300		2004	1800		30	20	1	R	530 - GENERAL DUTY RECEPTACLE
EXISTING KITCHEN EXHAUST FAN	E	25	3	29					1800		30	20	1	R	530 - GENERAL DUTY RECEPTACLE
	E	-	-	31	2004			1800			32	20	1	R	530 - GENERAL DUTY RECEPTACLE
	E	-	-	33		2004			1800		34	20	1	R	535 - GENERAL DUTY RECEPTACLE
SPARE	S	20	1	35					1800		36	20	1	R	535 - GENERAL DUTY RECEPTACLE
PANEL KP2	E	225	3	37	12055			3840			38	40	3	E	EXISTING HEAT PUMP
	E	-	-	39		10855			3840		40	-	-	E	
	E	-	-	41			10379			3840	42	-	-	E	
CONNECTED LOAD (VA)					19451	16795	18155	14152	14022	12860					
CONNECTED LOAD PER PHASE (VA)					33603	30617	31015								

DEMAND		
TYPE	FACTOR	LOAD
L	1.00	2478
R	0.80	7200
M	1.00	0
E	1.00	83957
S	1.00	0
X	0.00	0
TOTAL CONNECTED LOAD		95435 VA
TOTAL DEMAND LOAD		93635 VA
TOTAL ESTIMATED DEMAND		260 AMPS

NOTE: WHERE INDICATED ABOVE:

- \* MODIFY THE EXISTING PANEL TO INCLUDE AN ISOLATED GROUND BUS.
- \*\* PROVIDE G.F.I. CIRCUIT BREAKER
- \*\*\* PROVIDE LOCAL CODE APPROVED LOCK-OUT CIRCUIT BREAKER
- \*\*\*\* PROVIDE ARC FAULT CIRCUIT BREAKER

**PANELBOARD**

PANEL: KP2 TYPE: NOOD BUS: 225A VOLTAGE: 120/ 208 3 PHASE 4 WIRE

LOCATION: RM 106 MOUNTING: FLUSH MAIN: MAIN BREAKER NEUTRAL: ⇒ 100% 200% OPTIONS: ⇒ BOLT-ON CIRCUIT BREAKERS ⇒ FEED THRU LUGS ⇒ MONO-FLUSH TRIM ⇒ SHUNT TRIP

ENCLOSURE: NEMA 1 FEEDER: ⇒ TOP ⇒ BOTTOM GROUND: ⇒ EQUIPMENT ⇒ ISOLATED

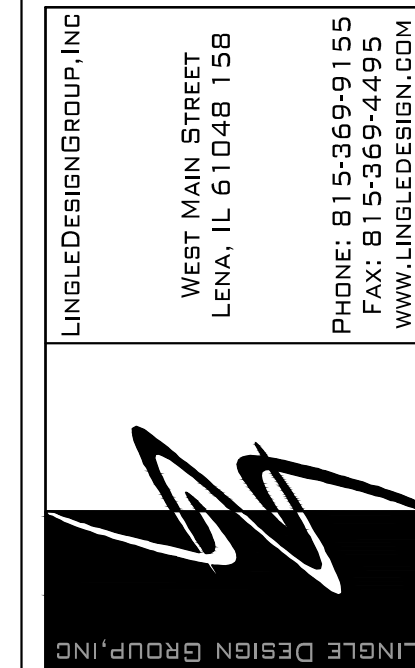
SHORT CIRCUIT RATING: 22,000 AIC

ITEM	TYPE	AMP RATING	POLE	CR. NO.	LEFT PHASE LOAD			RIGHT PHASE LOAD			CR. NO.	AMP RATING	POLE	TYPE	ITEM
					A	B	C	A	B	C					
705 - ICE MAKER HEAD	E	20	2	1	1144			720			2	20	1	R	GENERAL RECEPTACLES
710 - DRINK DISPENSER	E	20	1	5		1144			180		4	20	1	R	TOILET ROOM RECEPTACLE
710.1 - BAG-IN-BOX DRINK CARBONATOR	E	20	1	7			624			600	6	20	1	R	POS RECEPTACLES
SPARE	S	20	1	9			1800			720	8	20	1	R	TELEPHONE BOARD OUTLET
715 - ICE TEA BREWER	E	20	1	11			1784			708	10	20	3	E	235 - COOLER COMPRESSOR
785 - DIGITAL TIMER	R	20	1	13	180			708			14	-	-	E	
815 - POS REGISTERS	E	25	1	15		2400			360		16	20	1	E	WH-1, WH-2
125 - CONVECTION THERMOLIZER	E	30	3	17	2640		2640		867		18	15	3	E	DUMBWAITER
	E	-	-	19	2640			867			20	-	-	E	
	E	-	-	21		2640			867		22	-	-	E	
205-60 - SANDWICH TOP REFRIGERATOR	E	20	1	23			1080			1596	24	20	3	E	MAU-1
135 - CHIP WARMER	E	20	1	25	480			1596			26	-	-	E	
136 - CHIP WARMER	E	20	1	27		960			1596		28	-	-	E	
137 - CHIP WARMER	E	20	1	29			480			0	30	20	1	X	SPACE
132 - MOBILE WARMING CABINET	E	20	1	31	1200			0			32	20	1	X	SPACE
SPACE	X	20	1	33			0		0		34	20	1	X	SPACE
SPACE	X	20	1	35			0		0		36	20	1	X	SPACE
SPACE	X	20	1	37	0		0		0		38	20	1	X	SPACE
SPACE	X	20	1	39			0		0		40	20	1	X	SPACE
SPACE	X	20	1	41			0		0		42	20	1	X	SPACE
CONNECTED LOAD (VA)					7444	7144	6608	4611	3711	3771					
CONNECTED LOAD PER PHASE (VA)					12055	10855	10379								

DEMAND		
TYPE	FACTOR	LOAD
L	1.00	0
R	0.80	1920
M	1.00	0
E	1.00	30889
S	1.00	0
X	0.00	0
TOTAL CONNECTED LOAD		33289 VA
TOTAL DEMAND LOAD		32809 VA
TOTAL ESTIMATED DEMAND		91 AMPS

NOTE: WHERE INDICATED ABOVE:

- \* MODIFY THE EXISTING PANEL TO INCLUDE AN ISOLATED GROUND BUS.
- \*\* PROVIDE G.F.I. CIRCUIT BREAKER
- \*\*\* PROVIDE LOCAL CODE APPROVED LOCK-OUT CIRCUIT BREAKER
- \*\*\*\* PROVIDE ARC FAULT CIRCUIT BREAKER



1408 Reed Street, Suite 100  
Naperville, Illinois 60563-6003  
Lansing, Michigan 48206-1404  
TEL: (630) 295-0044  
FAX: (630) 295-0044  
WWW.LINGLEDESIGN.COM

**Larson Engineering Inc.**  
© 2009

© ALL DRAWINGS AND WRITTEN MATERIAL CONTAINED HEREIN ARE THE PROPERTY OF THE ARCHITECT. THEY MAY NOT BE REPRODUCED, COPIED, REUSED, OR DISCLOSED IN ANY MANNER WITHOUT WRITTEN AUTHORIZATION FROM THE ARCHITECT.



REVISIONS:	DATE:	DESCRIPTION:	ISSUED FOR PERMIT
#	07/08/10		

PROJECT NUMBER: 09-116  
DRAWN BY: THM  
CHECKED BY: JMD

SHEET TITLE:  
**ELECTRICAL RISER AND SCHEDULES**

SHEET NUMBER:  
**E4.0**