

ELECTRICAL NOTES

NOTES

- A SPIRAL WRAP NECESSARY LENGTH OF STRIP HEATER ON DRAIN LINE. USE "E-Z" HEAT (OR EQUAL) 120 1ph. WIRE HEATER TO FAN CIRCUIT OF BLOWER COIL SO THAT HEATER IS ALWAYS ON EXCEPT DURING DEFROST CYCLE. STRIP HEATER FURNISHED BY KITCHEN EQUIPMENT SUPPLIER TO ELECTRICAL CONTRACTOR FOR HOOK-UP.
- B ALL DIMENSIONS GIVEN ARE IN INCHES TO 2"-0" AND AR FROM CENTERLINES AND/OR FINISHED WALLS. ELEVATIONS GIVEN ARE FROM FINISHED FLOOR TO CENTERLINE OF OUTLET. ALL ROUGH-INS SHOWN ARE TO BE RUN INSIDE WALLS (EXCEPT STUB-UPS). LOCATION INDICATES POINT OF EXIT FROM WALLS, CEILINGS OR FLOORS. ALL CONVENIENCE OUTLETS ARE TO BE SET HORIZONTALLY. ALL 120 VOLT OUTLETS NOT DESIGNATED WITH SPECIFIC LOADS TO BE RATED AT 20.0 AMPS.
- C ELECTRICIAN TO CONNECT ALL ELECTRICAL EQUIPMENT AND FIXTURES AND DO ANY INTERNAL WIRING REQUIRED IN THE FIXTURES AS REQUIRED BY THE SPECIFICATIONS. ALL ELECTRICAL OUTLET COVER PLATES ARE TO BE STAINLESS STEEL AND ARE TO BE FURNISHED BY THE ELECTRICIAN, AS WELL AS THE RECEPTACLE, UNLESS OTHERWISE SPECIFIED IN THE ITEM SPECIFICATIONS. KITCHEN EQUIPMENT SUPPLIER TO FURNISH A GALVANIZED JUNCTION BOX IN THE FIXTURE CUTOUT TO RECEIVE THE RECEPTACLE, UNLESS OTHERWISE NOTED. ALL DISCONNECT SWITCHES REQUIRED ARE TO BE FURNISHED AND INSTALLED BY THE ELECTRICIAN AT TIME OF INSTALLATION.
- D ALL WORK TO BE PERFORMED IN FULL ACCORDANCE WITH ALL APPLICABLE CODES RELATING TO HOOK-UP, INSTALLATION AND WIRING OF EQUIPMENT. OMISSIONS OR ERRORS ON THE SCHEDULE DO NOT RELIEVE THE ELECTRICIAN FROM COMPLETE FINAL CONNECTION RESPONSIBILITY.
- E CONTROL CIRCUIT FROM ELECTRICIAN FURNISHED AND INSTALL SHUNT TRIP BREAKER(S) TO FIRE CONTROL SYSTEM CONTROL MICRO-SWITCH. SHUNT TRIP BREAKER(S) TO BE UNDER EXHAUST HOOD. IN CASE OF FIRE, ALL POWER TO EQUIPMENT UNDER HOOD WILL BE SHUT OFF. ALL GAS EQUIPMENT LOCATED UNDER HOOD WILL ALSO BE SHUT OFF IN CASE OF FIRE. MUST BE WIRED THAT IN THE EVENT OF POWER FAILURE, FIRE CONTROL SYSTEM WILL NOT BE ACTIVATED AND WHEN POWER IS RESTORED, FIRE SYSTEM WILL NOT DISCHARGE.

ELECTRICAL SYMBOLS

SYMBOLS		ABBREVIATIONS	
(J)	JUNCTION BOX (J-BOX)	EL	ELEVATION ABOVE FINISHED FLOOR
(●)	ELECTRICAL STUB-UP	A	AMPERES
(○)	EQUIPMENT CONNECTION	V	VOLTS
(⊕)	DUPLEX CONVENIENCE OUTLET (DCO)	W	WATTS
(⊖)	SINGLE CONVENIENCE OUTLET (SCO)	PH	PHASE
(⊖)	SINGLE POWER OUTLET (SP)	AFF	ABOVE FINISHED FLOOR
(⊖)	FLOOR RECEPTACLE	DFA	DOWN FROM ABOVE
(○)	LIGHT INDICATION	BTC	BRANCH TO CONNECTION POINT AND CONNECT EQUIPMENT
(□)	BREAKER PANELBOARD	SU	STUB UP ABOVE FINISHED FLOOR
(S)	SWITCH AS NOTED	HP	HORSE POWER
(M)	MOTOR OUTLET	KW	KILLOWATTS
(B)	BLOWER COIL MOTOR	DC	DIRECT CONNECTION
(●)	HEAT ELEMENT	KES	KITCHEN EQUIPMENT SUPPLIER
(□)	FLOOR BOX (FL. BOX)		

KITCHEN EQUIPMENT SCHEDULE								
TAG	QUANTITY	DESCRIPTION	VOLTS	PHASE	AMPS	CIRCUIT	CONDUIT & WIRE	REMARKS
105	2	TORTILLA WARMERS	120	1	15.0 EA	KP1: 11,13	2#12,1#12 GND, 3/4" C	(2) LOCATIONS
106	2	QUESADILLA TOASTER	120	1	15.0 EA	KP1: 15,17	2#12,1#12 GND, 3/4" C	(2) LOCATIONS
107	1	MOBILE FOOD WARMER	120	1	10.0	KP1: 19	2#12,1#12 GND, 3/4" C	
108	1	2-WELL HOT FOOD TABLE	120	1	12.5	KP1: 21	2#12,1#12 GND, 3/4" C	
110	1	HOT FOOD TABLE	208	1	16.6	KP1: 23-25	2#10,1#10 GND, 3/4" C	
125	1	BTC ON CONVECTION REHEAT/MOLZIZER	208	3	22.0	KP2: 17-19-21	3#10,1#10 GND, 3/4" C	
132	1	MOBILE WARMING CABINET	120	1	10.0	KP2: 31	2#12,1#12 GND, 3/4" C	
135	1	CHP WARMER	120	1	4.0	KP2: 25	2#12,1#12 GND, 3/4" C	
136	1	BTC ON FIXTURE MOUNTED SCO FOR CHP WARMER	120	1	8.0	KP2: 27	2#12,1#12 GND, 3/4" C	
137	1	CHP WARMER	120	1	4.0	KP2: 29	2#12,1#12 GND, 3/4" C	
205-60	1	SANDWICH TOP REFRIGERATOR	120	1	9.0	KP2: 23	2#12,1#12 GND, 3/4" C	
210-36	1	WORK-TOP REFRIGERATOR	120	1	5.5	KP1: 8	2#12,1#12 GND, 3/4" C	(2) LOCATIONS
215-27	1	WORK-TOP FREEZER	120	1	6.8	KP1: 10	2#12,1#12 GND, 3/4" C	
218	2	SANDWICH TOP REFRIGERATOR	120	1	4.0	KP1: 12	2#12,1#12 GND, 3/4" C	(2) LOCATIONS
220	1	MERCHANDISER	120	1	10.5	KP1: 14	2#12,1#12 GND, 3/4" C	
225	1	BTC ON ICE MACHINE	120	1	12.8	KP1: 16	2#12,1#12 GND, 3/4" C	
235	1	BTC ON COOLER LIGHTS	120	1	2.7	KP1: 18	2#12,1#12 GND, 3/4" C	
236	1	BTC ON COOLER COMPRESSOR ON ROOF	208	3	5.9	KP2: 10-12-14	3#12,1#12 GND, 3/4" C	
405	1	BTC ON PRE-WARMED HOOD LIGHTS	120	1	20.0	KP1: 26	2#10,1#10 GND, 3/4" C	
530	3	GENERAL DUTY	120	1	15.0	KP1: 28,30,32	2#12,1#12 GND, 3/4" C	(3) LOCATIONS
535	2	GENERAL DUTY	120	1	15.0	KP1: 34,36	2#12,1#12 GND, 3/4" C	(2) LOCATIONS
705	1	BTC ON ICE MAKER HEAD	208	1	11.0	KP2: 1-3	2#12,1#12 GND, 3/4" C	
710	1	DRINK DISPENSER	120	1	5.2	KP2: 5	2#12,1#12 GND, 3/4" C	
710.1	1	BAG-IN-BOX RACK FOR DRINK CARBINATOR	120	1	15.0	KP2: 7	2#12,1#12 GND, 3/4" C	
715	1	ICE TEA BREWER	120	1	14.9	KP2: 11	2#12,1#12 GND, 3/4" C	
785	1	DIGITAL TIMER	120	1	0.5	KP2: 13	2#12,1#12 GND, 3/4" C	
815	1	BTC ON FIXTURE MOUNTED RECEPTACLES FOR (2) POS REGISTERS BY OWNER (DEDICATED CIRCUIT, ISOLATED GROUND)	120	1	20.0	KP2: 15	2#10,1#10 GND, 3/4" C	

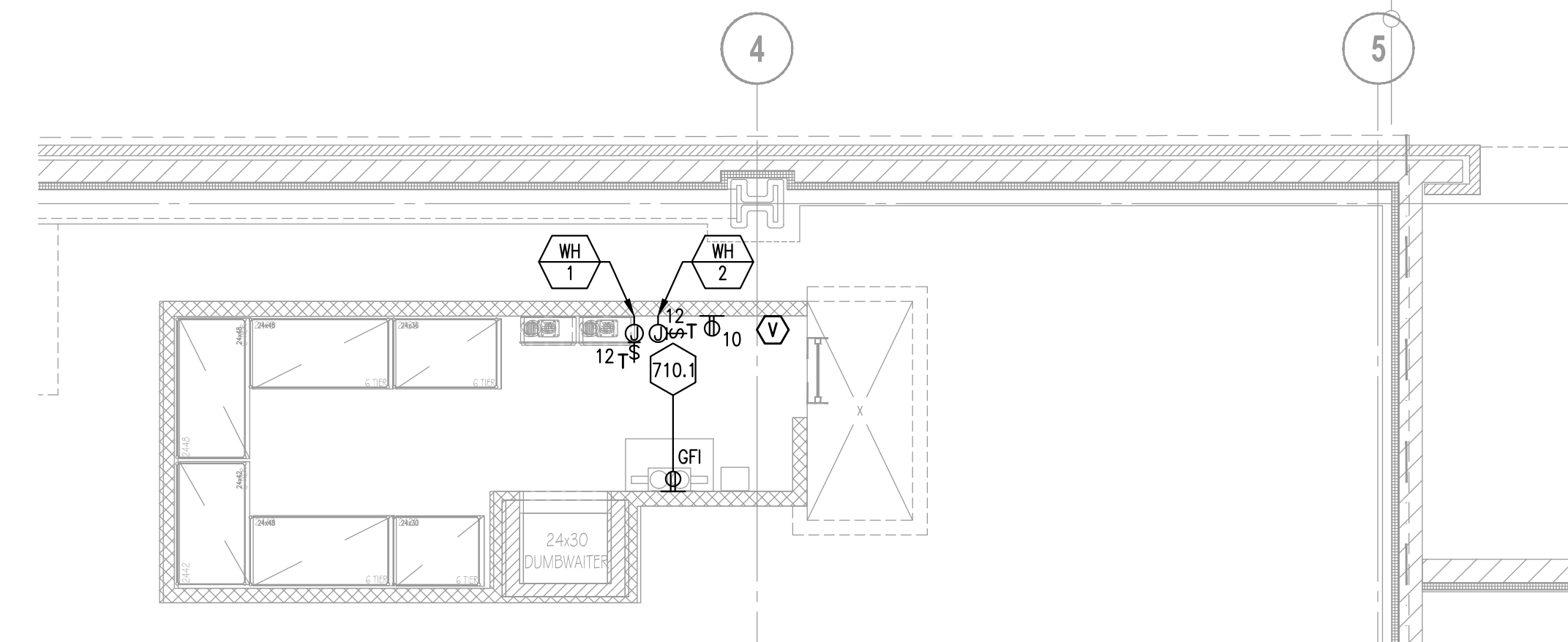
- NOTES
- SEE KITCHEN EQUIPMENT SCHEDULE AND DRAWINGS FOR MOUNTING HEIGHTS AND ROUGH IN REQUIREMENTS.
 - ALL POS EQUIPMENT SHALL BE ISOLATED GROUNDED TYPE.
 - ALL RECEPTACLES IN THE KITCHEN AREA SHALL BE G.F.C.I.
 - PROVIDE ALL SHUNT TRIP WIRING.

KEY NOTES

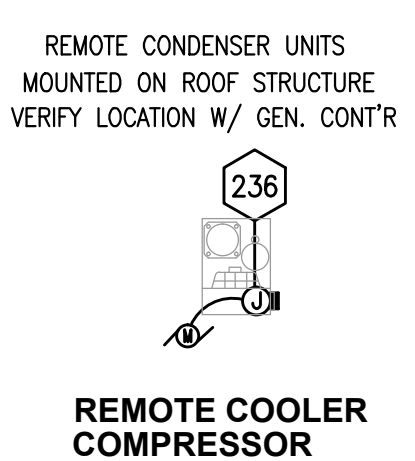
- DISCONNECT AND REMOVE EXISTING RECEPTACLE. PROVIDE NEW ABOVE COUNTER GFI RECEPTACLE. CONNECT NEW RECEPTACLE TO EXISTING CIRCUIT.
- DISCONNECT EXISTING PANEL KP1 AND RELOCATE TO WALL WEST OF SAME ROOM.
- DISCONNECT EXISTING MOTOR STARTER AND RELOCATE TO WALL NEXT TO DESK.
- NEW LOCATION OF PANEL KP1.
- NEW LOCATION OF RELOCATED MOTOR STARTER.
- PROVIDE 20A, 120V RECEPTACLE WITH ISOLATED GROUND WIRE FOR PRINTERS/POS.
- JUNCTION BOX IN WALL FOR DATA CABLES. EXTEND 1" EMPTY CONDUIT, WITH PULL WIRE, FROM OFFICE TO POS CABINET AT FRONT COUNTER.
- TELEPHONE SERVICE SHALL BE PROVIDED BY TELEPHONE UTILITY COMPANY. ELECTRICAL CONTRACTOR SHALL PROVIDE 2" C. FROM TELEPHONE SERVICE ENTRANCE AND EXTEND TO OFFICE AS REQUIRED. ISOLATED GROUND FOR MUSIC, TELEPHONE, AND SECURITY SYSTEM. FURNISH AND INSTALL A 4"x4"x3/4" FIRE TREATED PLYWOOD BACKBOARD. COORDINATE LOCATION WITH OWNER AND SPECIAL SYSTEM EQUIPMENT SUPPLIERS. PROVIDE A #6 STRANDED BARE COPPER WIRE FROM 2"x1/4"x1/2" COPPER GROUND BAR TO THE MAIN GROUND ELECTRODE AT THE SERVICE ENTRANCE PER NEC.
- TELEPHONE OUTLET. ROUTE 3/4" EMPTY CONDUIT TO TELEPHONE TERMINAL BOARD. REFER TO TWO LINE JACK SETUP DETAIL ON SHEET E4.0 FOR ADDITIONAL INFORMATION.
- OUTLET FOR TIME CLOCK. MOUNT 60" ABOVE FINISHED FLOOR. COORDINATE EXACT LOCATION AN HEIGHT IN FIELD. GENERAL CONTRACTOR TO INSTALL MUD RING ADJACENT TO OUTLET.
- J.B. FOR CONNECTION OF WALK-IN FAN COIL UNIT AND CONTROLS. CONNECT COMPLETE AND READY FOR OPERATION PER THE N.E.C. PROVIDE INTERLOCK WIRING CONNECTIONS WITH COOLER COMPRESSOR ON ROOF. COORDINATE REQUIREMENTS WITH EQUIPMENT SUPPLIER.
- JUNCTION BOX FOR CONNECTION OF WALK-IN LIGHTS AND CONTROLS. CONNECT COMPLETE AND READY FOR OPERATION PER THE NEC AND EQUIPMENT SUPPLIER.
- CONNECTION FOR DUMBWATER CONTROL PANEL. ALL OTHER DUMBWATER ELECTRICAL PROVIDED AND INSTALLED BY DUMBWATER SUPPLIER.
- NEW GAS FIRED MAKE UP AIR UNIT. 208V. 3 PHASE 13.3 MCA.

GENERAL NOTES:

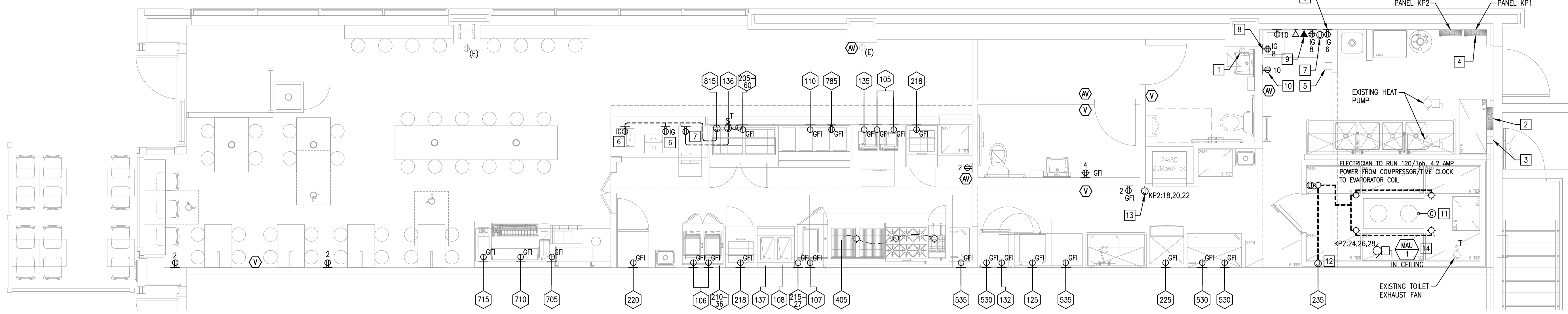
- REFER TO KITCHEN CONSULTANT DRAWING K-3 (ELECTRICAL ROUGH-IN PLAN) FOR MOUNTING HEIGHTS OF ALL KITCHEN RECEPTACLES.



STORAGE AREA POWER PLAN



REMOTE COOLER COMPRESSOR



GROUND FLOOR POWER PLAN

LINGLE DESIGN GROUP, INC.
 WEST MAIN STREET
 LEVIA, IL 61048-1198
 PHONE: 815-369-9155
 FAX: 815-369-4495
 WWW.LINGLEDESIGN.COM

1408 Reed Street, Suite 100
 Naperville, Illinois 60563-6003
 Phone: 630-329-0044
 Fax: 630-329-0044
 U.S. Comm. No. 2-409044-0000
 Copyright © 2010

Larson Engineering Inc.

© ALL DRAWINGS AND WRITTEN MATERIAL CONTAINED HEREIN ARE THE PROPERTY OF THE ARCHITECT. THEY MAY NOT BE REPRODUCED, REUSED, OR DISCLOSED IN ANY MANNER WITHOUT WRITTEN AUTHORIZATION FROM THE ARCHITECT.

Qdoba
 MEXICAN GRILL
 20 E. Chicago Avenue
 Chicago, IL 60611-2009

REVISIONS:	DATE:	DESCRIPTION:
#	07/08/10	ISSUED FOR PERMIT

PROJECT NUMBER: 09-116
 DRAWN BY: THM
 CHECKED BY: JMD

SHEET TITLE:
ELECTRICAL POWER PLAN

SHEET NUMBER:
E3.0