


LIGHTING FIXTURE SCHEDULE

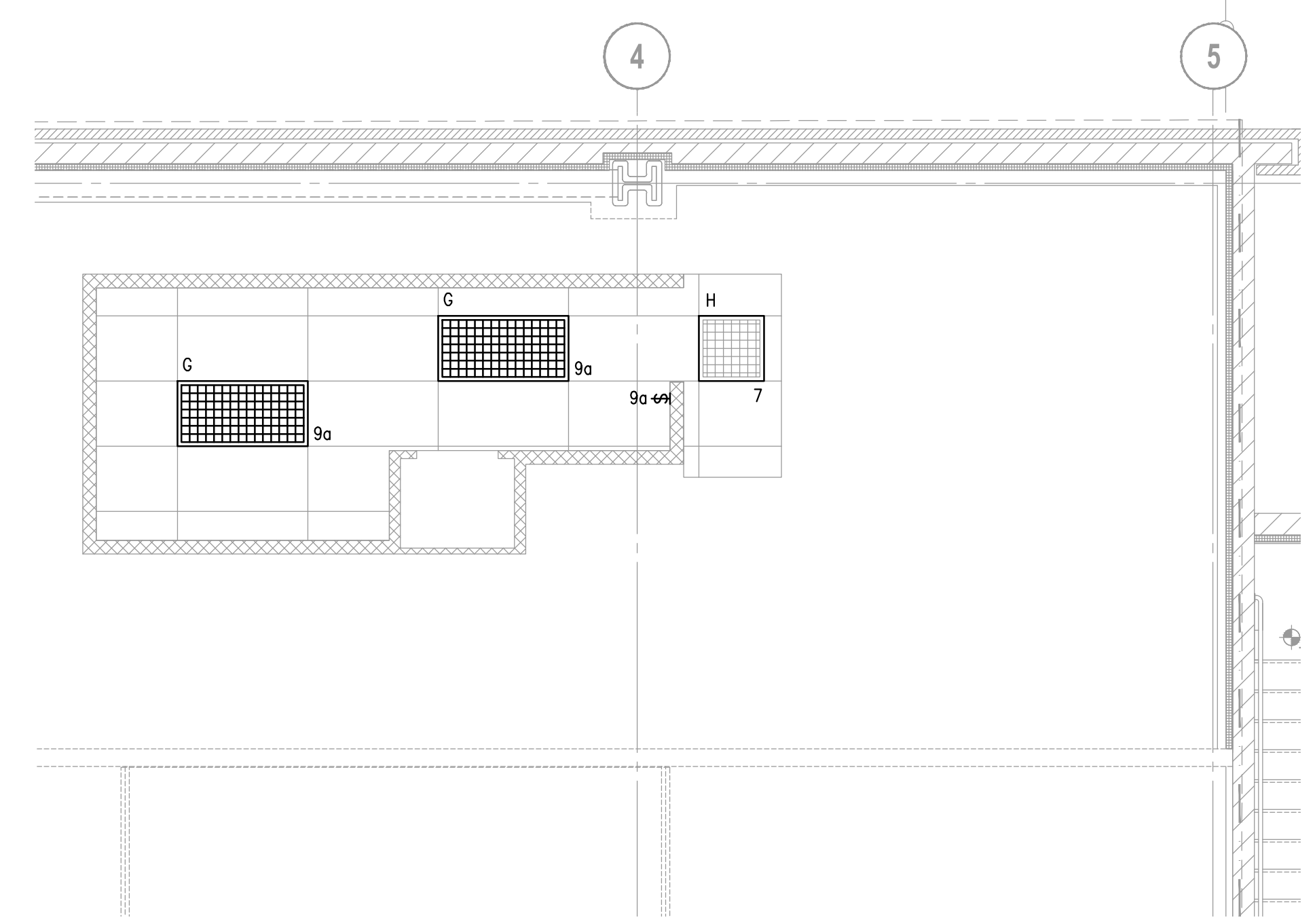
MARK	SYMBOL	DESCRIPTION	VOLTAGE	LAMPS		MOUNTING	MANUFACTURER AND CATALOG NUMBER	REMARKS
				WATTS	TYPE			
A	∇ _A	TRACK HEAD WITH GLASS LENS - BLACK	120V.	37W	37W/MR16 NFL	TRACK	LIGHTOLIER # 22G6BK	GE MODEL Q37MR16/HR/CG25 (16716)
B	∇ _B	TRACK HEAD WITH GLASS LENS - BLACK	120V.	10W	LED10PAR30 NFL	TRACK	LIGHTOLIER # 8236BK-8202BK	GE MODEL LED10PAR30/NFL
C	○ _C	6" DIAMETER INCANDESCENT HOUSING WITH BEVELED BLACK BAFFLE AND BLACK TRIM RING	120V.	90W	PAR38	RECESSED	LOL # 1102P1/1176	GE MODEL 90PARHFL256PK-90 WATT PAR38 HALOGEN FLOOD LAMP 120V GE#17451
C1	○ _{C1}	6" DIAMETER HID DOWNLIGHT WITH WHITE TRIM RING	120V.	39W	HID	RECESSED	LIGHTOLIER # C6T6VMCLW	GE MODEL CMH39TUVU830G12 (20153)
C2	○ _{C2}	6" DIAMETER LED DOWNLIGHT WITH WHITE TRIM RING	120V.	15W	LED	RECESSED	HALO # H750CAT/ML706830/494 SC06	
D	⊗ _D	6" BLACK CYLINDER WITH SILVER REFLECTOR	120V.	20W	MED BASE CFL	PENDANT, 9'-0" TO BOTTOM OF FIXTURE A.F.F.	DELUX #4144 W/12'-0" CORD	GE MODEL FLE20TT3/827 (12008)
E	⊗ _E	SINGLE LAMP FLUORESCENT, STEM MOUNTED, DECORATIVE PENDANT (CENTER WITH WINDOW WHERE APPLICABLE), WITH 15' BLACK CORD, COBALT BLUE GLASS & SATIN CHROME	120V.	13W	F13DBX/SPX35 4P	PENDANT, 7'-0" TO BOTTOM OF FIXTURE A.F.F.	WILSHIRE # SP07000-48-927 W/15'-0" BLACK CORD	EXACT FIXTURE TO BE SELECTED BY OWNER/ARCHITECT
F	⊗ _F	MONOPONT FIXTURE WITH TELESCOPIC ARM, SATIN NICKLE FINISH AND BLACK BACKLIGHT SHIELD	120V.	37W	37W/MR16 /NFL	MENU-BOARD RAIL ASSEMBLY	TECH LIGHTING # 700FJTELS W/ 700MR16SBK AND 700FJFCPS	GE MODEL Q37/MR16/NFL/HR (16716) PROVIDE WITH TECH LIGHTING # 700AT300
EM	↻	CHICAGO CODE APPROVED EMERGENCY LIGHTING UNIT	120V.	15W	INCLUDED	WALL 11'-0" A.F.F.	EXITRONIX # LL SERIES	
G	□ _G	2' x 4' FLUORESCENT TROFFER WITH PRISMATIC ACRYLIC LENS, 3-LAMP, ELECTRONIC BALLAST	120V.	87W	F28/T8/SP35 120V	RECESSED/LAY-IN GRID	LOL # XP2GVA332-UNV-GI-CUL	GE MODEL F28T8SP35UMXEO-28 WATT T8 4-LAMP (73500256)
H	□ _H	2' x 4' FLUORESCENT TROFFER WITH PRISMATIC ACRYLIC LENS, 2-LAMP, ELECTRONIC BALLAST	120V.	60W	F32/T8/UB/120V	RECESSED/LAY-IN GRID	LOL # XP2GVA26UNVCA	GE MODEL F32T8SP35U6-32 WATT T8 4-LAMP 3500K U-LAMP (23585)
J	□ _J	2' x 2' FLUORESCENT TROFFER WITH PRISMATIC ACRYLIC LENS, 2-LAMP, ELECTRONIC BALLAST, SURFACE MOUNTED	120V.	60W	F32/T8/U/120V	SURFACE	METALUX # 2M2U6T8120EB81U	GE MODEL F32T8SP35U6-32 WATT T8 4-LAMP 3500K U-LAMP (23585)
T4	—	4'-0" SINGLE CIRCUIT TRACK SECTION, PENDANT STEM, CANOPY MOUNTED, MATTE BLACK, PROVIDE ALL NECESSARY MOUNTING HARDWARE AND CONNECTORS	120V.	—	—	10'-0" A.F.F.	LOL # 6001BK	SEE NOTE # 3
T8	—	8'-0" SINGLE CIRCUIT TRACK SECTION, PENDANT STEM, CANOPY MOUNTED, MATTE BLACK, PROVIDE ALL NECESSARY MOUNTING HARDWARE AND CONNECTORS	120V.	—	—	10'-0" A.F.F.	LOL # 6002BK	SEE NOTE # 3
X	⊗ _X	CHICAGO CODE APPROVED EXIT LIGHT WITH BATTERY BACK-UP	120V.	5W	LED	WALL @ 11'-0" A.F.F. OR CEILING	EXITRONIX - CSX-WB-1-LED-120-W	SEE NOTE # 1
X1	⊗ _{X1}	EXITRONIX - DOUBLE HEAD WEATHERPROOF REMOTE LAMP	120V.	—	—	EXTERIOR ABOVE DOOR	EXITRONIX # 2Z1P	
X2	⊗ _{X2}	CHICAGO CODE APPROVED EXIT LIGHT WITH EMERGENCY LIGHT CAPABILITIES	120V.	15W	LED	ABOVE DOOR	EXITRONIX # CSC-1-LED-120-W	SEE NOTE # 1

- LIGHTING NOTES:**
- PROVIDE DIRECTIONAL ARROWS AS SHOWN ON PLAN DRAWINGS AND AS REQUIRED BY LOCAL CODE AUTHORITIES. WIRE ALL EXIT SIGNS AHEAD OF LOCAL SWITCHING.
 - HALF SHADED FIXTURES () DENOTES NIGHT LIGHT. WIRE ALL NIGHT LIGHTS AHEAD OF LOCAL SWITCHING.
 - PROVIDE A COMPLETE AND OPERABLE SYSTEM OF TRACK LIGHTING TO INCLUDE ALL POWER FEEDS, CONNECTORS, ELS, SUPPORTS, MOUNTING HARDWARE, ETC.. INCLUDE ALL COSTS IN BASE BID PROPOSAL.
 - REFER TO ARCHITECTURAL DRAWINGS FOR EXACT FIXTURES TO BE SELECTED AND ADDITIONAL INFORMATION ON LIGHTING FIXTURES.
 - CONTACT VILLA LIGHTING (JAY BECKER) @ (800) 325-0963 TO RECEIVE CORPORATE PRICING FOR PREFERRED LIGHTING PACKAGE.
 - PROVIDE FIXTURES AS LISTED ON LIGHTING FIXTURE SCHEDULE. PROVIDE NECESSARY MOUNTING HARDWARE FOR A COMPLETE INSTALLATION. PROVIDE LAMPS BALLASTS AND ANY SPECIAL CONTROLS NOTED. ALL LIGHTING FIXTURES SHALL BE PROVIDED WITH CODE APPROVED MEANS OF SUPPORT.
 - ALL LIGHT FIXTURES SHALL BE LABELED BY MANUFACTURER TO MAXIMUM WATTAGE LISTED IN LIGHTING FIXTURE SCHEDULE. MANUFACTURER SHALL PROVIDE REDUCE WATTAGE LABEL FOR LIGHT FIXTURE AS REQUIRED TO COMPLY WITH ENERGY CODE REQUIREMENTS.

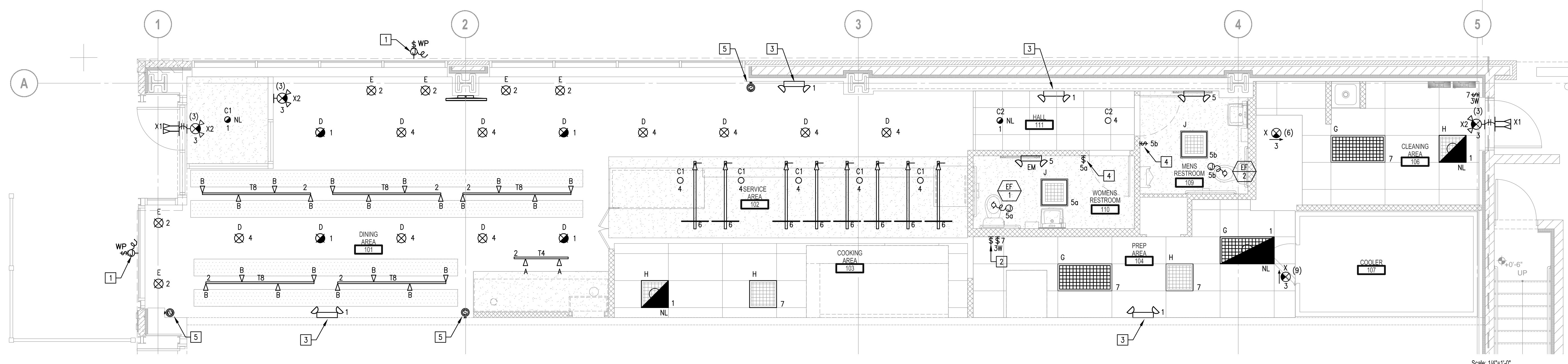
- KEY NOTES:**
- 20 AMP DEDICATED CIRCUIT WITH GROUND FOR EACH SIGN. PROVIDE J-BOX, DISCONNECT, AND WIRING ABOVE CEILING IN AN ACCESSIBLE AREA FOR SIGN. COORDINATE EXACT REQUIREMENTS AND LOCATION WITH SIGN SUPPLIER PRIOR TO ROUGH-IN. MAKE ALL FINAL CONNECTIONS TO SIGN. SIGN TO BE CONTROLLED VIA TIMECLOCK. PROVIDE FOUR CIRCUIT 24 HOUR TIME CLOCK WITH ASTRONOMICAL DIAL FOR CONTROL.
 - SWITCHBANK FOR CONTROL OF SALES FLOOR LIGHTING CIRCUITS 2,4,6. VERIFY EXACT LOCATION OF SWITCH BANK IN FIELD.
 - WIRE EM LIGHT AHEAD OF LOCAL SWITCHING.
 - MOUNT SWITCHES AT 44" A.F.F. TO CENTER OF SWITCH - WALL MOUNTED OCCUPANCY SENSOR PASS-SEYMOR #SNSP200-1 OR EQUAL.
 - AUDIO SPEAKER - COORDINATE LOCATION AND INSTALLATION WITH VENDOR - MOUNT SPEAKERS AT 12'-0" A.F.F.

FIRE PREVENTION BUREAU EGRESS SIGN FACE LEGEND

CHICAGO CODE NUMBER	DESCRIPTION	CHICAGO CODE NUMBER	DESCRIPTION
	SINGLE FACE		DOUBLE FACE
(1)	FIRE ESCAPE	(13)	FLUSH OR RECESSED
(2)	STAIRWAY OR STAIRS	(14)	TRIANGLE
(3)	EXIT	(15)	ELEVATOR
(4)	FIRE ESCAPE	(16)	FIRE ESCAPE
(5)	STAIRWAY OR STAIRS	(17)	STAIRWAY OR STAIRS
(6)	EXIT	(18)	EXIT
(7)	FIRE ESCAPE	(19)	FIRE ESCAPE
(8)	STAIRWAY OR STAIRS	(20)	STAIRWAY OR STAIRS
(9)	EXIT	(21)	EXIT
(10)	FIRE ESCAPE	(22)	FIRE ESCAPE
(11)	STAIRWAY OR STAIRS	(23)	STAIRWAY OR STAIRS
(12)	EXIT	(24)	EXIT



STORAGE AREA LIGHTING PLAN Scale: 1/4"=1'-0"



GROUND FLOOR LIGHTING PLAN Scale: 1/4"=1'-0"

LINGLEDESIGNGROUP, INC.
WEST MAIN STREET
LEVA, IL 61048-1136
PHONE: 815-369-9155
FAX: 815-369-4495
WWW.LINGLEDESIGN.COM



1408 Reed Street, Suite 100
Naperville, Illinois 60563-6003
Lansing, Michigan 48306-3444
Lisle, Illinois 60532-0944
LIL. Comm. No. 2-809048-000
COPYRIGHT © 2010
Larson Engineering Inc.

© ALL DRAWINGS AND WRITTEN MATERIAL CONTAINED HEREIN ARE THE PROPERTY OF THE ARCHITECT. THEY MAY NOT BE REPRODUCED, COPIED, REUSED, OR DISCLOSED IN ANY MANNER WITHOUT WRITTEN AUTHORIZATION FROM THE ARCHITECT.

Qdoba MEXICAN GRILL
20 E. Chicago Avenue
Chicago, IL 60611-2009

REVISIONS:

#	DATE	DESCRIPTION
1	07/08/10	ISSUED FOR PERMIT

PROJECT NUMBER: 09-116
DRAWN BY: TMR
CHECKED BY: JMD

SHEET TITLE:
ELECTRICAL LIGHTING PLAN

SHEET NUMBER:
E2.0