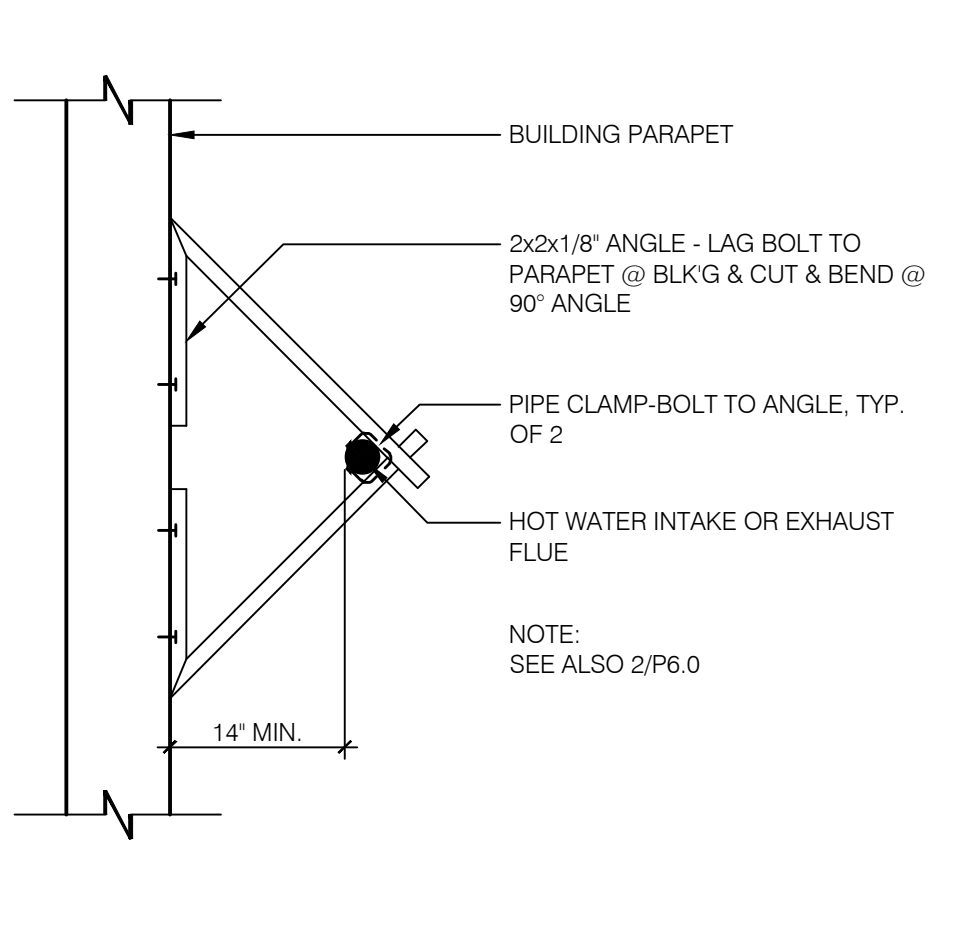
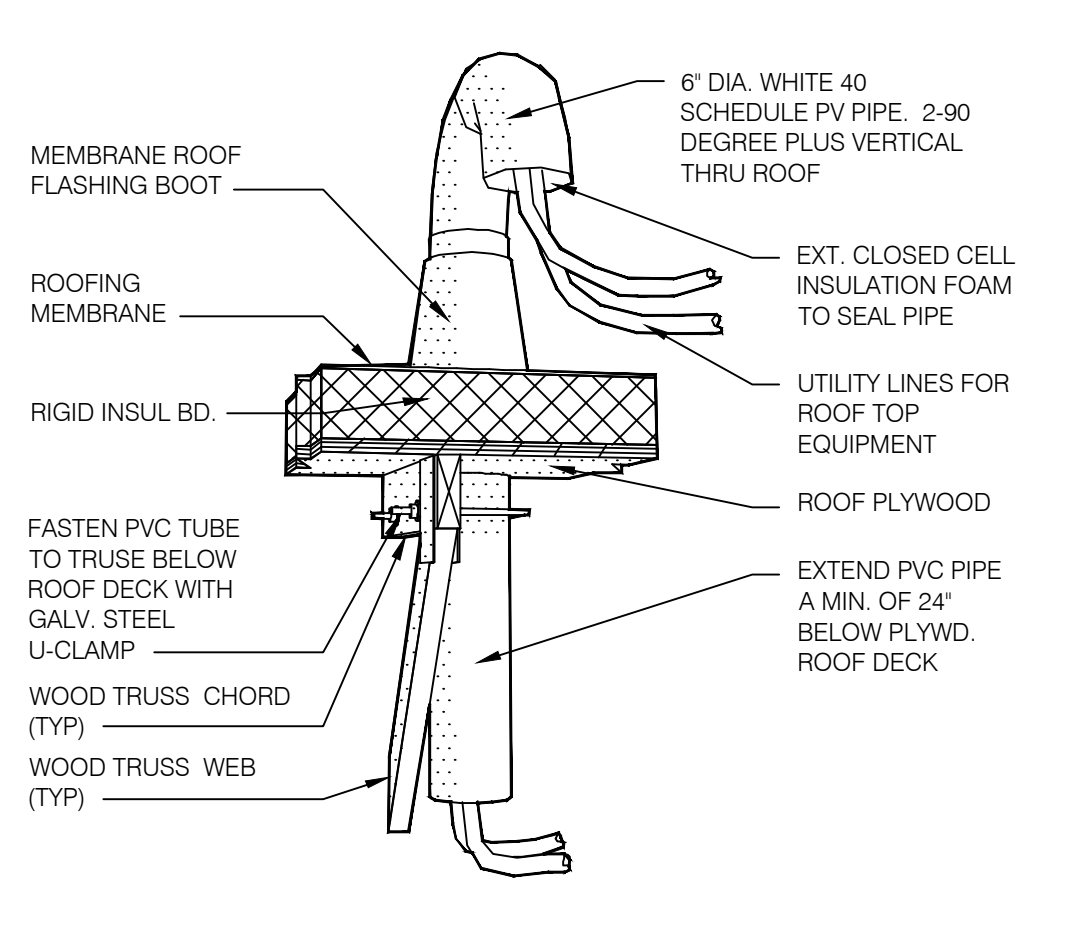


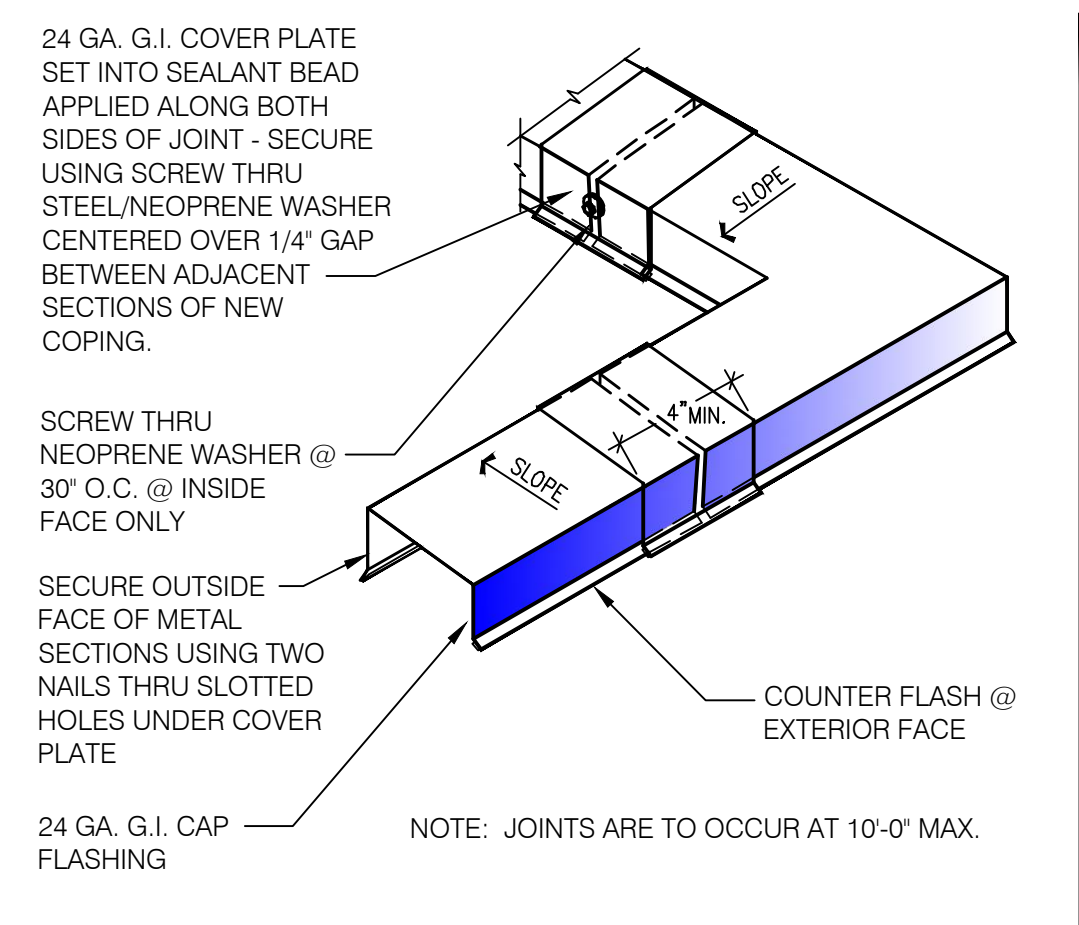
BRICK SUPPORT @ COOLER DETAIL 1-1/2' = 1'-0" **17**



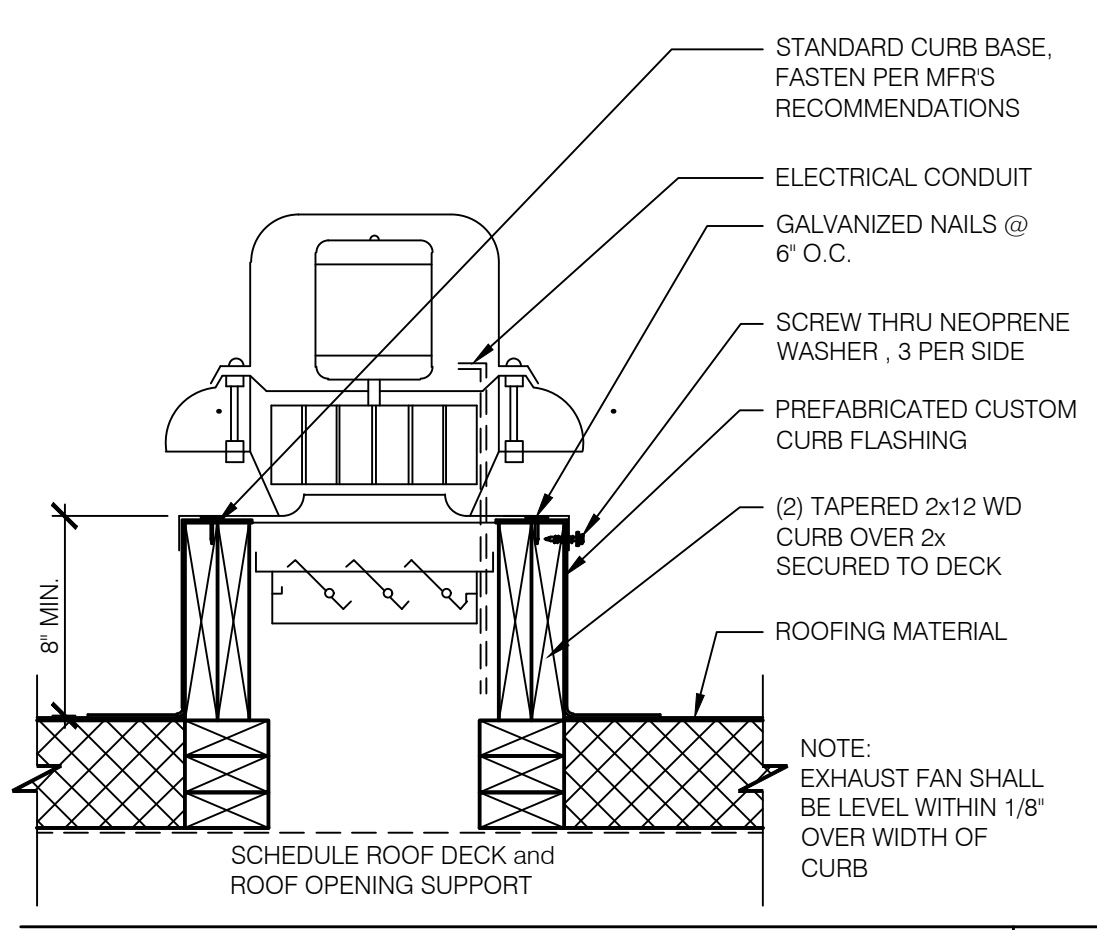
W.H. FLU / INTAKE PIPE SUPPORT N.T.S. **13**



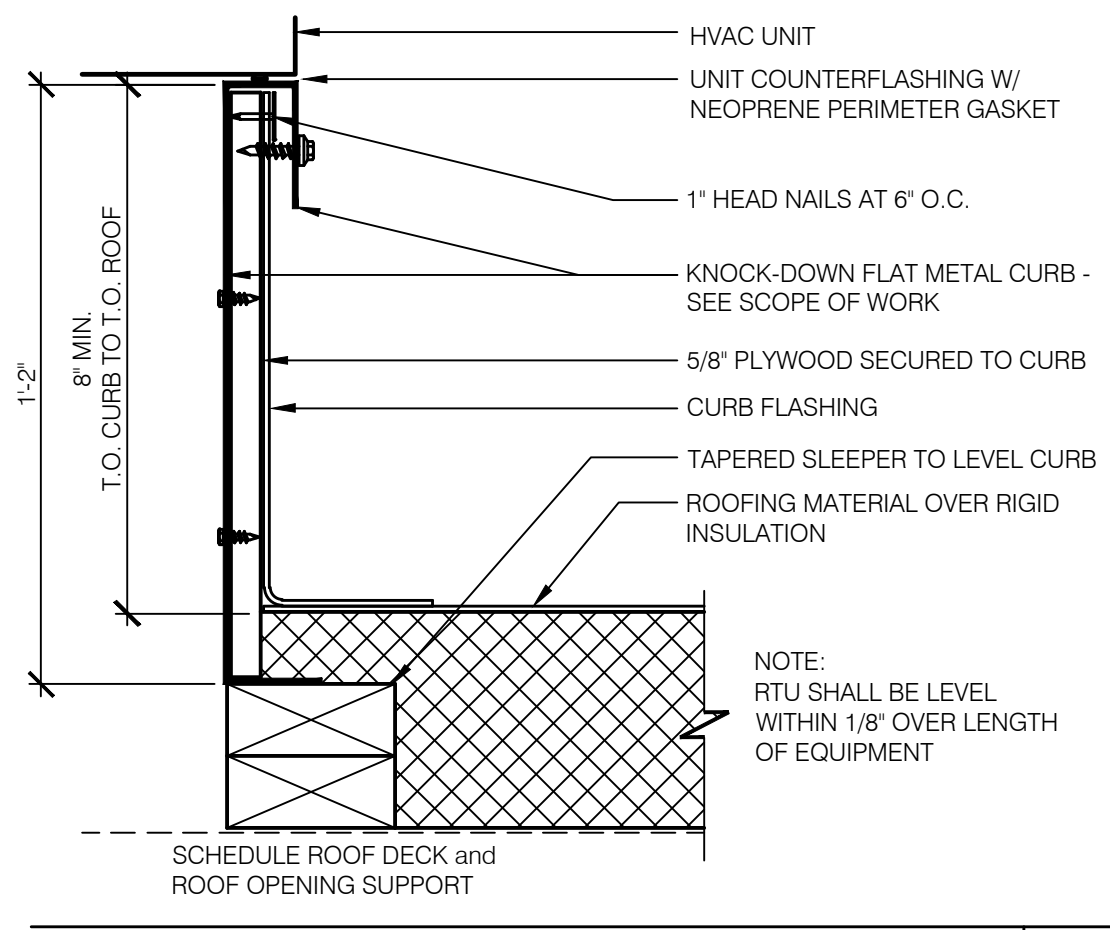
PIPE HOOD N.T.S. **9**



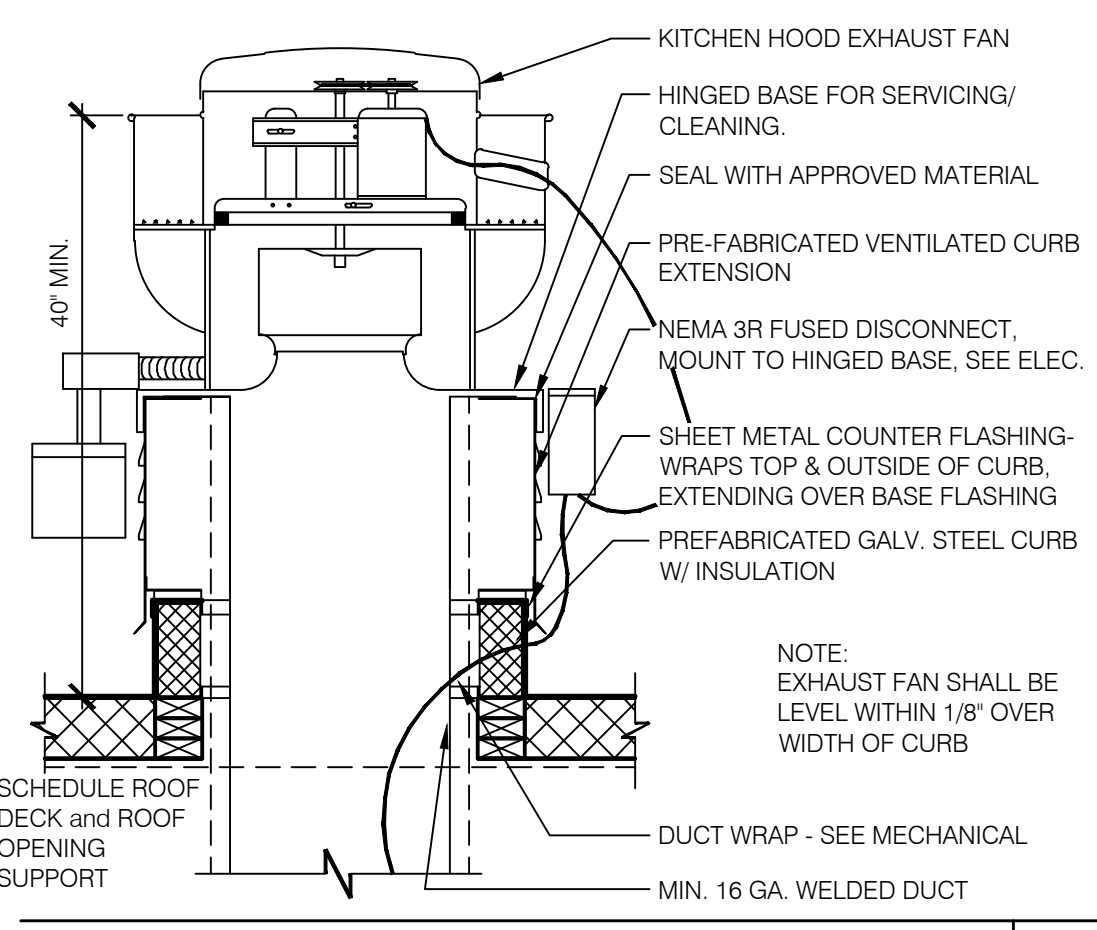
COPING JOINT N.T.S. **5**



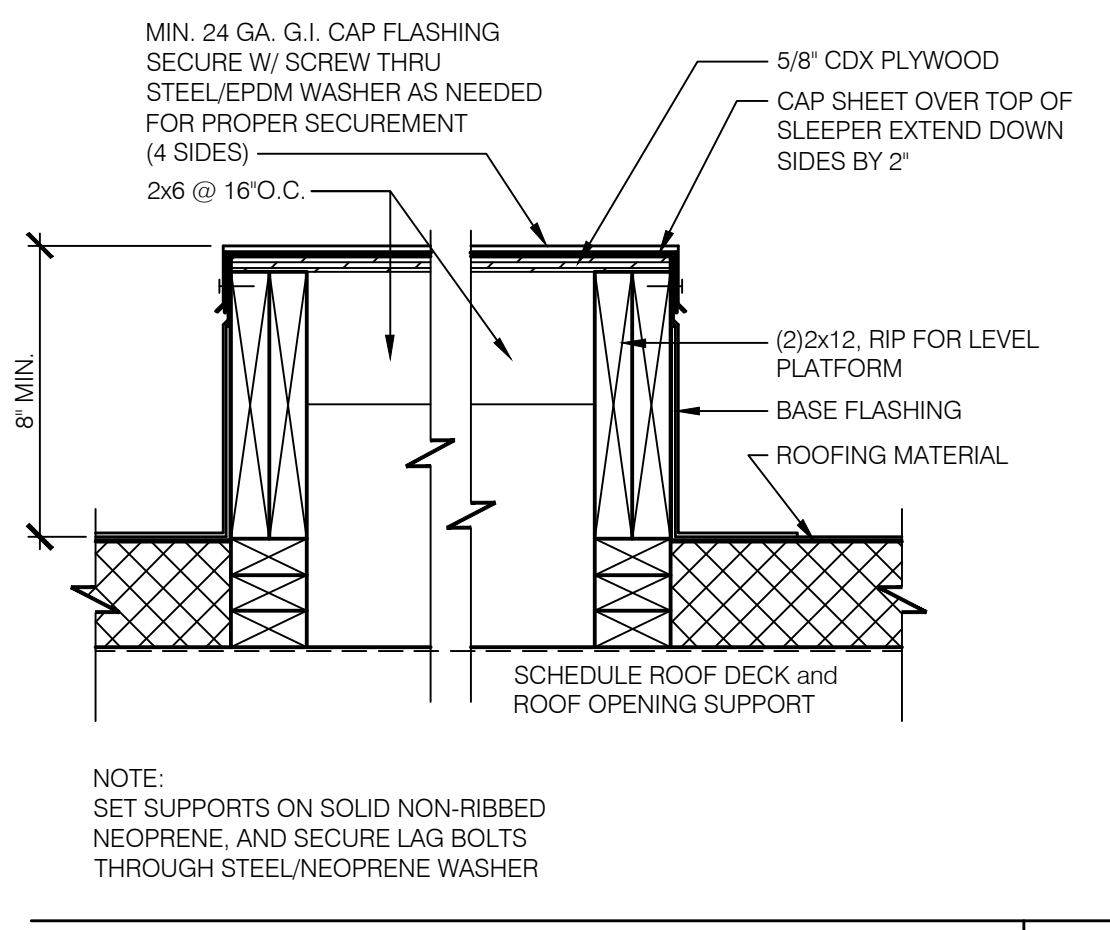
EXHAUST FAN CURB 1-1/2' = 1'-0" **18**



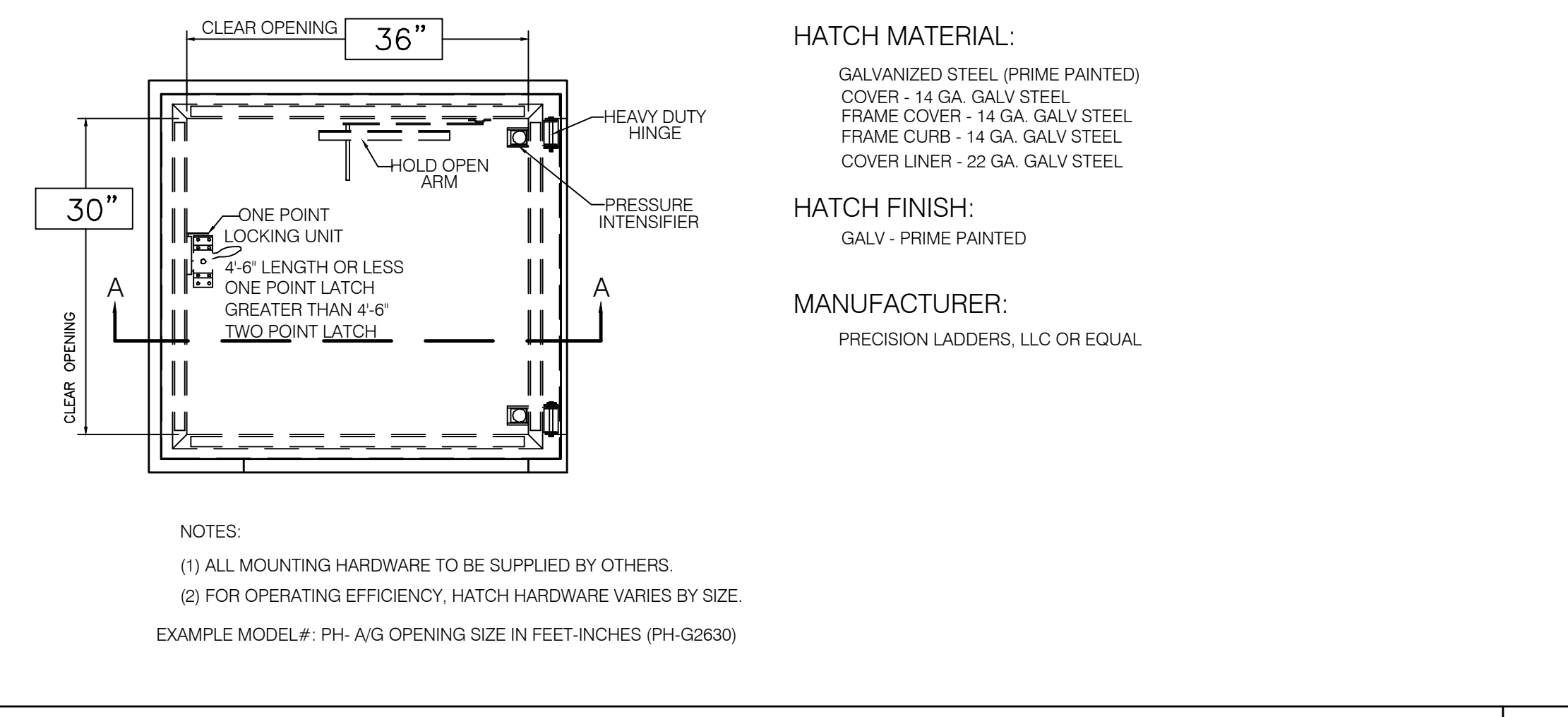
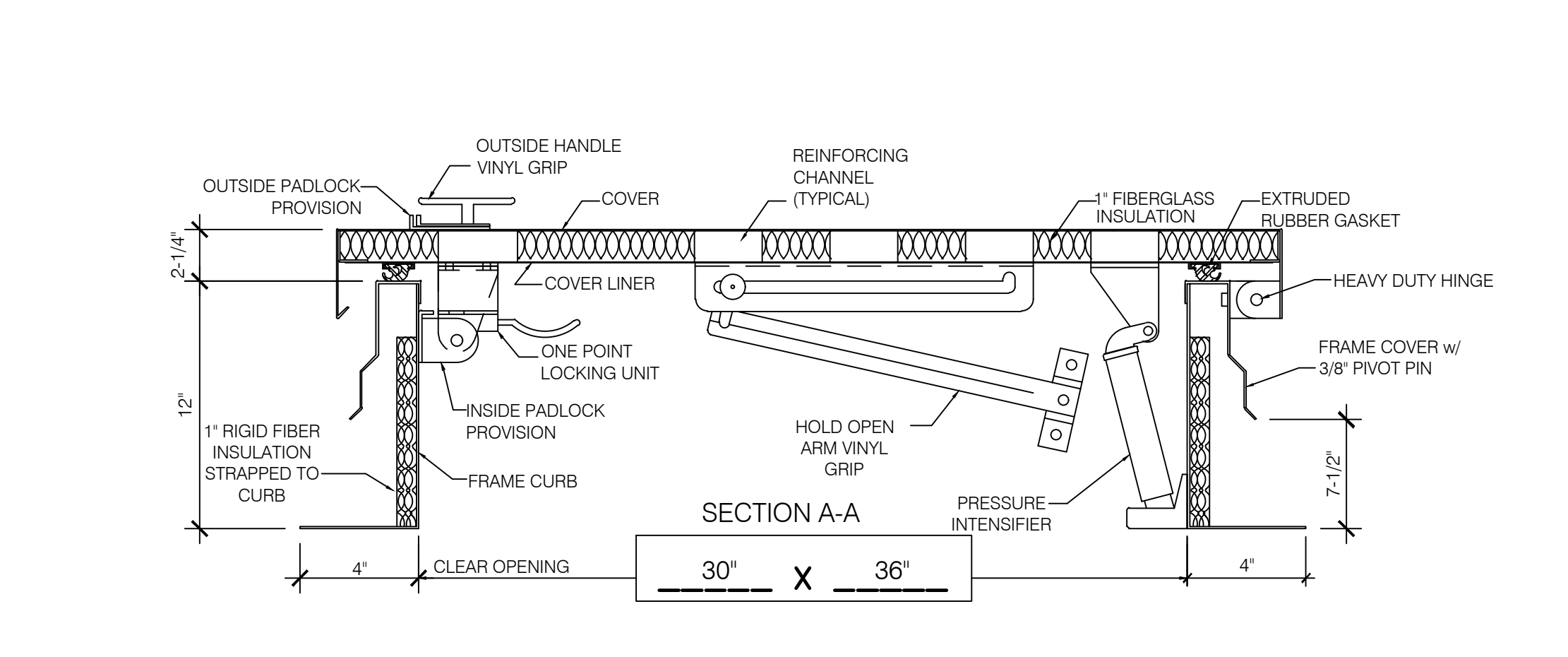
HVAC CURB 3' = 1'-0" **14**



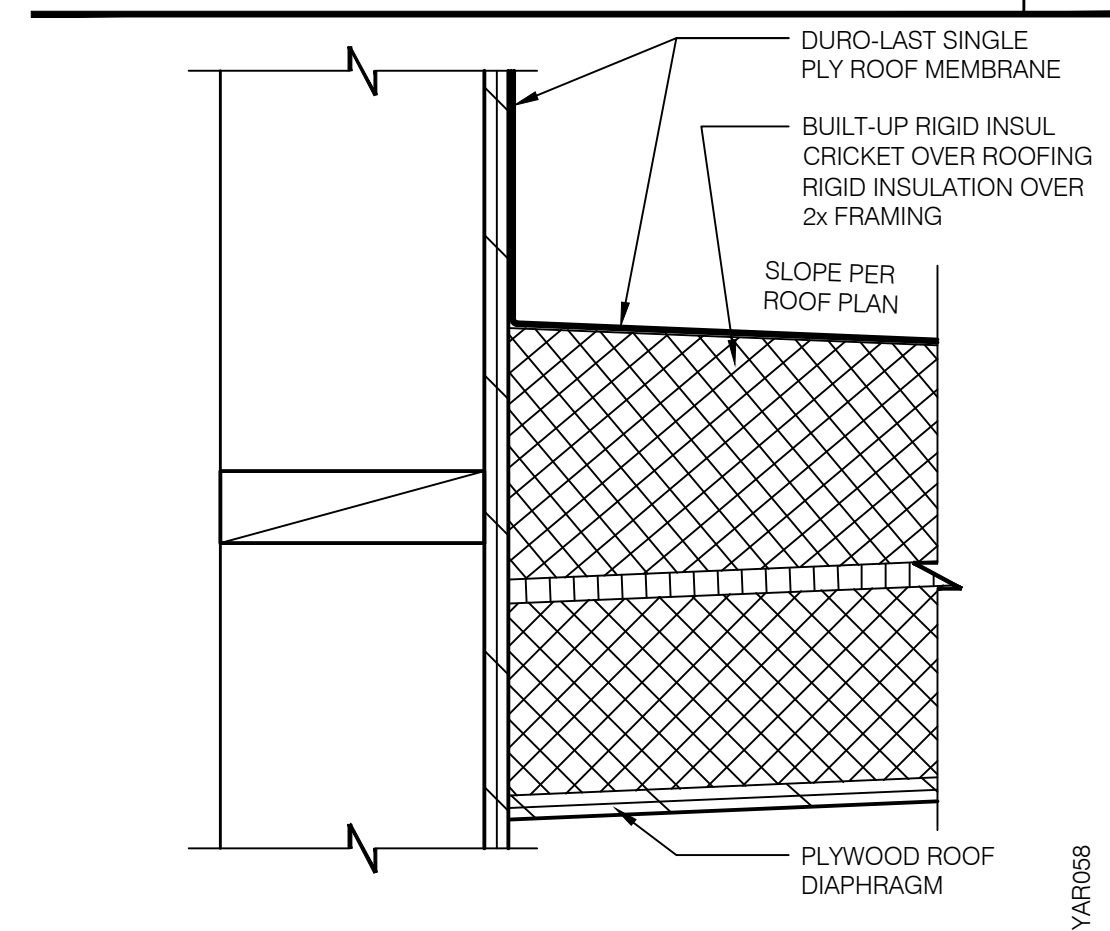
EXHAUST FAN CURB N.T.S. **19**



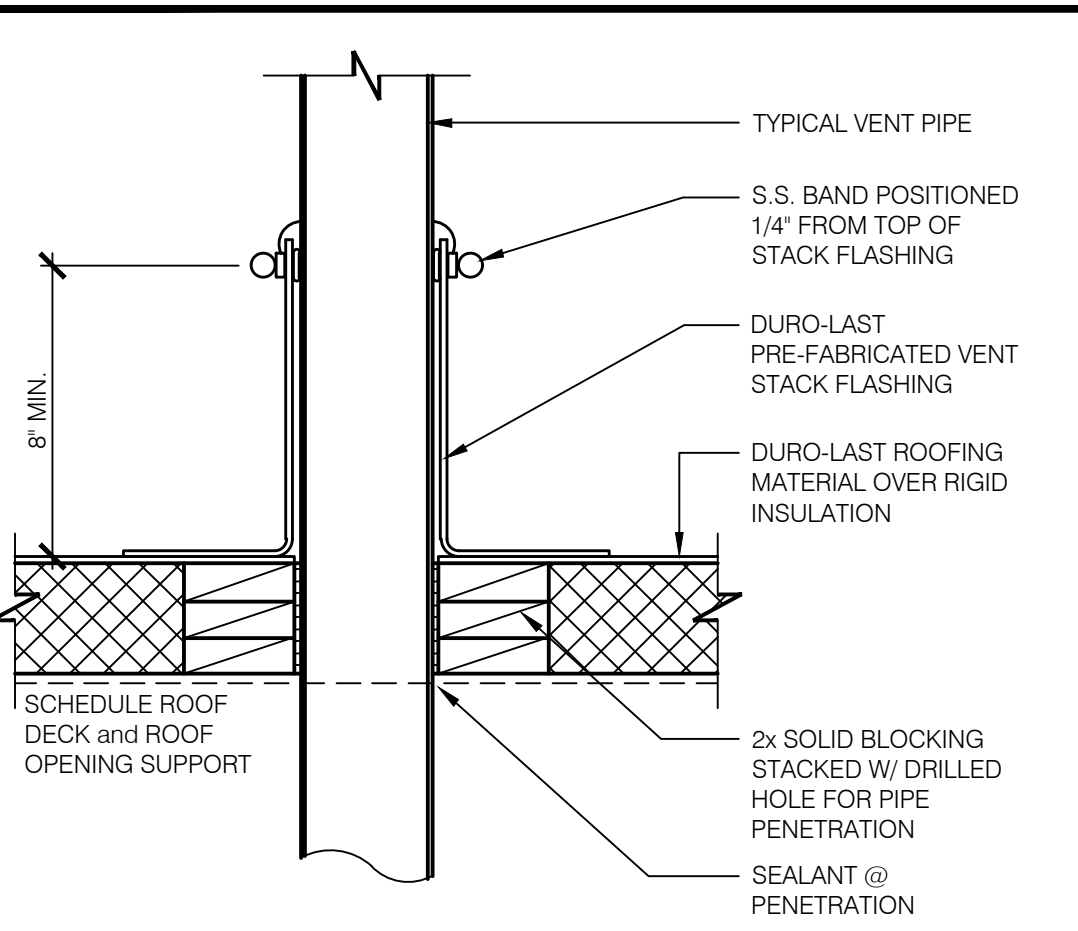
EQUIPMENT PLATFORM SUPPORT 1-1/2' = 1'-0" **15**



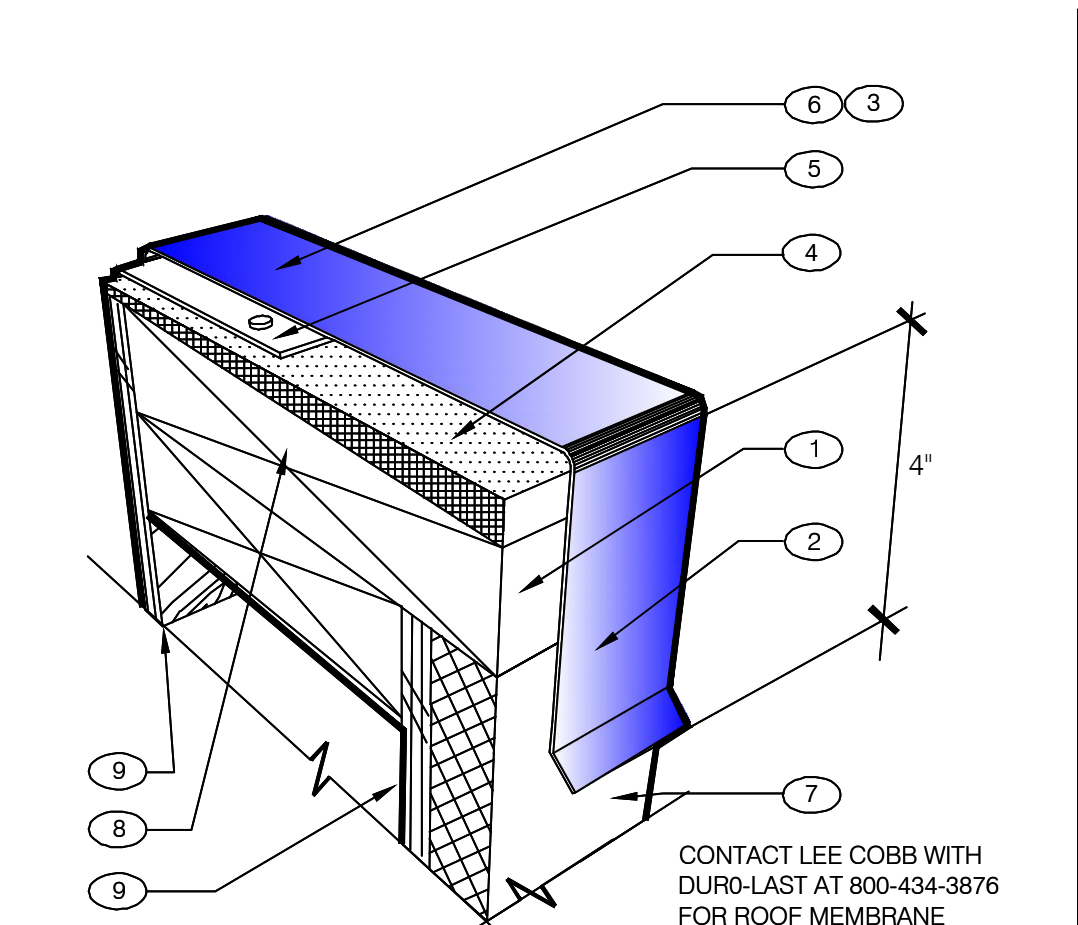
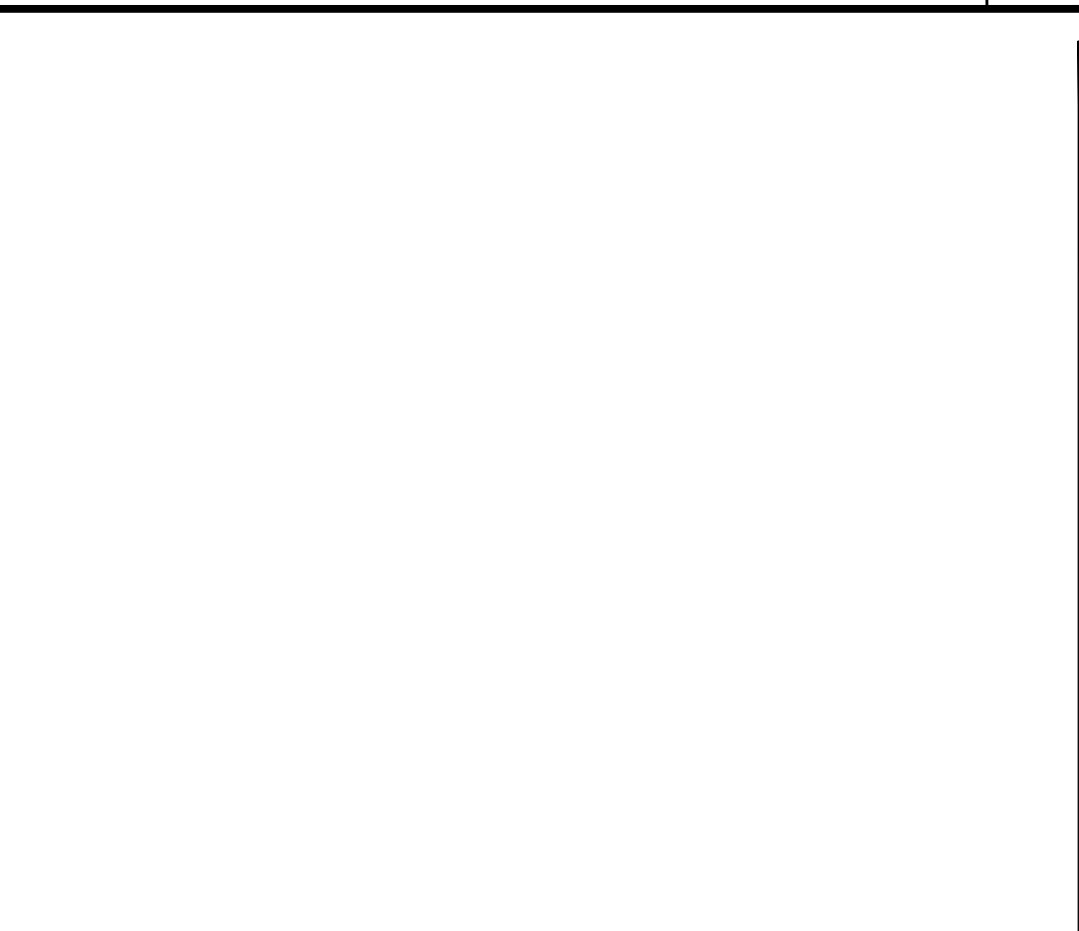
ROOF LADDER AND HATCH 1' = 1'-0" **7**



CRICKET 3' = 1'-0" **16**



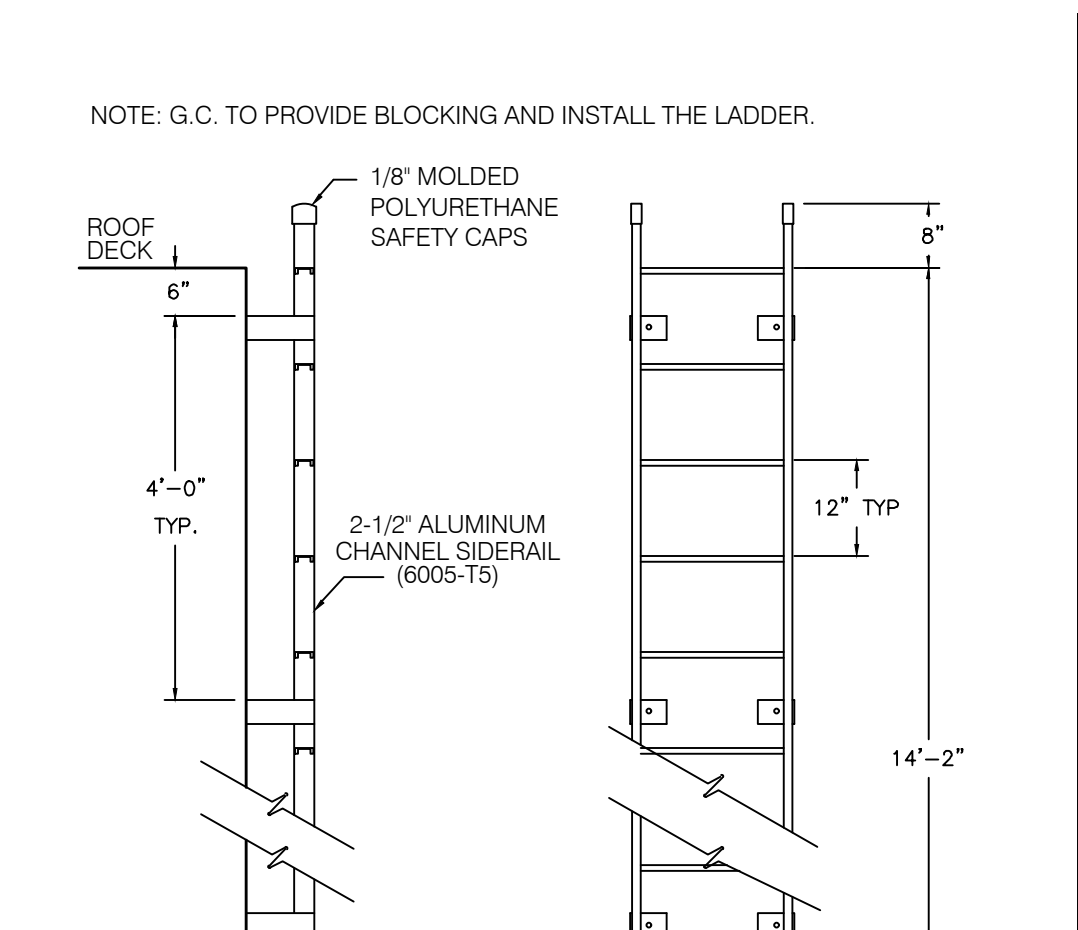
SEALED PIPE FLASHING 1 1/2' = 1'-0" **12**



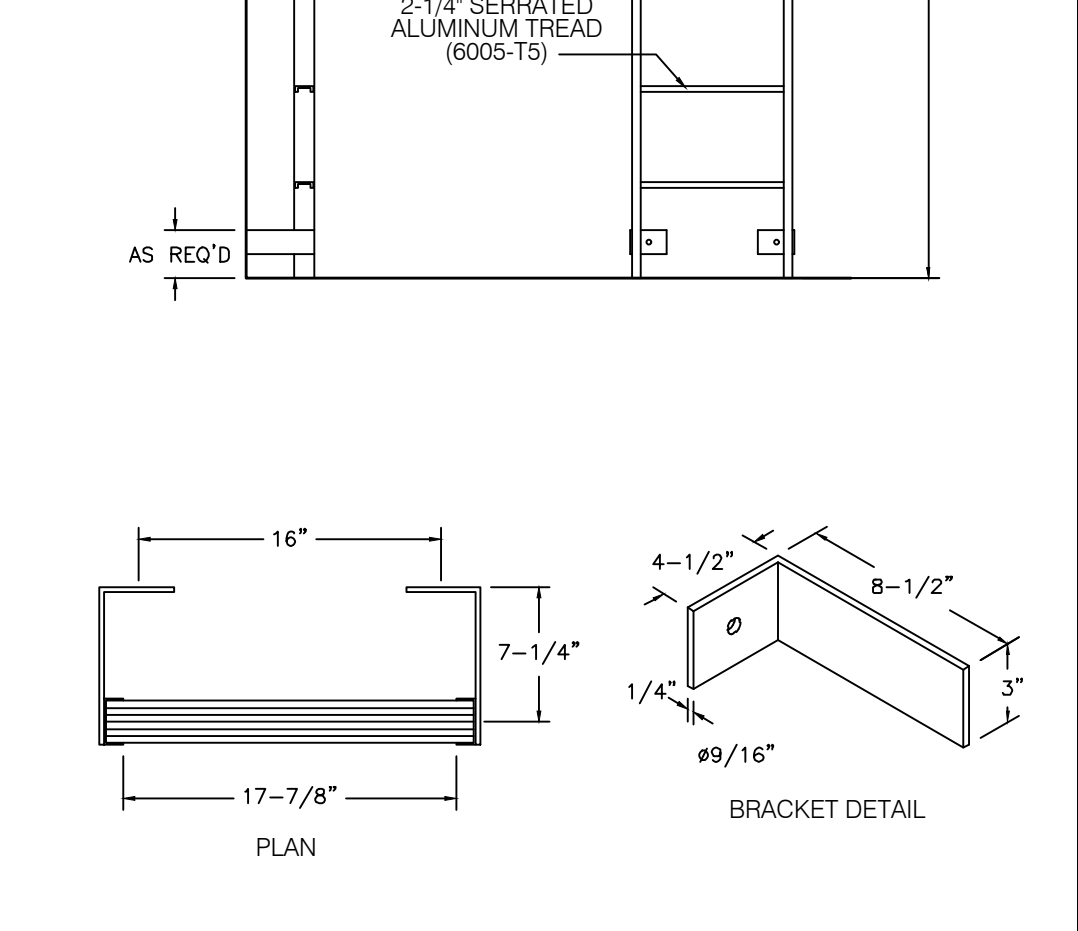
PARAPET CAP N.T.S. **2**

- NOTES
- PROVIDE A WOOD NAILER TO MATCH THE THICKNESS OF THE WALL FINISH. APPROX. 1" THICK IS TYPICAL BUT MAY VARY. TOP OF WOOD NAILER SHALL BE FLUSH WITH TOP OF WALL FINISH. THE WOOD NAILER SHALL EXTEND AT LEAST 1/2" INCH BEYOND THE LOWER HORIZONTAL EDGE OF THE PARAPET COPING TO ALLOW FOR PROPER FASTENING.
 - FASTENERS USED TO ATTACH THE COPING TO WOOD NAILERS, MUST BE SPACED NO GREATER THAN 18 - INCHES ON-CENTER.
 - ALLOW FOR 1/8" INCH EXPANSION GAP BETWEEN 10-FOOT LENGTHS OF COPING. PROVIDE A COPING JOINT COVERS BETWEEN ENDS OF COPING PIECES AND AT CORNERS. JOINT COVERS SHOULD BE MADE FROM THE SAME MATERIAL AS THE COPING AND SHOULD LAP THE JOINTS A MINIMUM OF 6" ON EITHER SIDE. JOINT COVERS SHALL BE FASTENED THE SAME WAY AS THE COPING.
 - FIBER CANT STRIP SLOPED 1/4:12 TOWARDS ROOF.
 - ROOF MEMBRANE
 - FACTORY PAINTED 24 GAUGE METAL COPING WITH 4" DROP FRONT, BACK AND ENDS (WHERE SHOWN).
 - WALL FINISH: TYPICALLY 1" THK EIFS OR 7/8" THK STUCCO
 - DOUBLE 2X TOP PLATE
 - PLYWOOD SUBSTRATE. SEE SHEET A1.0 & S2.0 FOR ADDITIONAL DETAILS

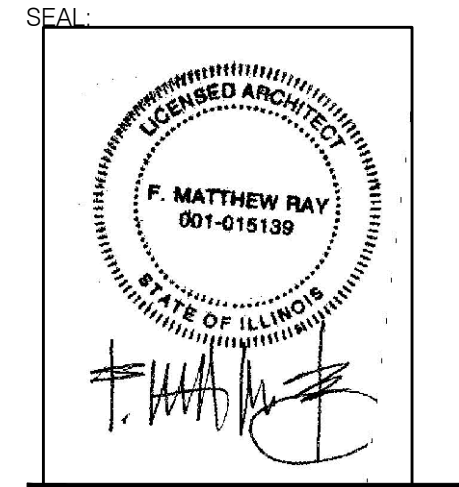
PARAPET CAP N.T.S. **2**



ROOF LADDER N.T.S. **4**



ROOF LADDER N.T.S. **4**



SPECIAL USE REVIEW 03-31-2018

△	BIDS AND PERMITS: MAY 8, 2018
△	
△	
△	
△	
△	
△	
△	
△	
△	

CONTRACT DATE:	XX.XX.XX
BUILDING TYPE:	EXPLORER 40
PLAN VERSION:	MAY 2016
SITE NUMBER:	312828
STORE NUMBER:	XXXXXX

TACO BELL
S. VOLBRECHT ROAD
CRETE, IL



CONSTRUCTION DETAILS ROOF

A6.0