



**SUBMITTAL \*\*\*FOR APPROVAL\*\*\***

**TAG: AH\_CU-1A**

**MODEL: 40RUAA08A2A6-0A0A0\_38AUZA07A0A5-0A0A0**

***SPLIT SYSTEM AIR HANDLER\_ CONDENSING UNIT***

**Project**

66 Orland Square Dr. Landlord Renovations

**Location**

Orland Park, IL

**Contractor**

Classic Air, Inc.

**Engineer**

Cartland Kraus

**Date**

June 22, 2015

## Table Of Contents

Project: 66 Orland Square Dr. Landlord Renovations  
Prepared By:

06/22/2015  
12:06PM

<b>AH_CU-1A .....</b>	<b>3</b>
Unit Report .....	4
Performance Summary.....	6
Acoustic Summary .....	11
Certified Drawing.....	13

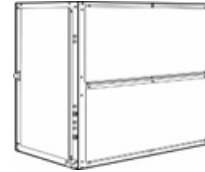
**AH\_CU-1A**

**Submittal Cover Sheet  
Unit Report  
Performance Summary Report  
Acoustic Summary  
Certified Drawings**

## Unit Report For AH\_CU-1A

Project: 66 Orland Square Dr. Landlord Renovations  
 Prepared By:

06/22/2015  
 12:06PM



### Outdoor Unit Parameters

Unit Quantity: ..... 1  
 Unit Model: ..... **38AUZ**  
 Unit Size: ..... **6 Tons**  
 Voltage: ..... **208-3-60** V-Ph-Hz  
 Condenser Coil: ..... **Al/Cu**  
 No. of DX Circuits: ..... 1

### System Parameter

System Quantity: ..... 1  
 Refrigerant Type: ..... **PURON**  
 Compressor Quantity: ..... 1  
 Compressor Type: ..... **Scroll**  
 Std. Capacity Steps: ..... **100**  
 Std. Min. Outdoor Temp(Cooling): ..... **35.0** °F  
 No. of Outdoor fans: ..... 2

### Outdoor Unit Dimensions and Weight

Unit Length: ..... **4' 11.4"**  
 Unit Width: ..... **3' 9.9"**  
 Unit Height: ..... **3' 6.4"**  
 Unit Shipping Weight: ..... **389** lb  
 Unit Operating Weight: ..... **389** lb

### Indoor Unit Parameters

Unit Model: ..... **40RUA**  
 Unit Size: ..... **7.5 Tons**  
 No. of Splits: ..... 1  
 Voltage: ..... **208-3-60** V-Ph-Hz

### Indoor Unit Dimensions and Weight

Unit Length: ..... **4' 1.0"**  
 Unit Width: ..... **2' 4.2"**  
 Unit Height: ..... **4' 8.1"**  
 Unit Shipping Weight: ..... **404** lb  
 Unit Operating Weight: ..... **404** lb

### Warranty Information (Note: for US & Canada only)

**NOTE: Please see Warranty Catalog 808-218 for explanation of policies and ordering methods.**

### Ordering Information

Part Number	Description	Quantity
<b>Base Unit - Outdoor</b>		
38AUZA07A0A5-0A0A0		1
	Base Unit	
	Al/Cu Condensing Coil	1
	Standard Refrigerant Options	1
	Service Options - None	1
	Electrical Options - None	1
	Packaging Options - Standard	1
	Standard Electrical Mechanical Controls	1
	Single Stage	1
<b>Base Unit - Indoor</b>		
40RUAA08A2A6-0A0A0		1
	Base Unit	
	Std Static, Std Eff Motor/ Medium Drive	1
	Cabinet Paint - None	1
	None- No Controller	1
<b>Accessories</b>		
<b>VST2800</b>	Venstar Commercial Programmable Thermostat	1

## Unit Report For AH\_CU-1A

Project: 66 Orland Square Dr. Landlord Renovations  
Prepared By:

06/22/2015  
12:06PM

CAECOMZR001B00	Economzer - Enthalpy Controlled for Indoor Unit	1
CASUSPEN001A00	Overhead Suspension Brackets for Indoor Unit	1
CAELHEAT013A00	35.0 kW, 240-3-60 Electric Heater	1

## Performance Summary For AH\_CU-1A

Project: 66 Orland Square Dr. Landlord Renovations  
 Prepared By:

06/22/2015  
 12:06PM

**System:** ..... **38AUZ007/40RUA008**  
 System Quantity: ..... **1**  
 Altitude: ..... **0.0** ft  
 EER @ ARI Conditions: ..... **11.5**  
 IEER: ..... **12.2**  
 Suction Line Loss: ..... **1.4** °F  
 System meets the Energy Star EER rating.

### Liquid and Suction Line Sizing

Pipe Length	Liquid Line Size	Suction Line Size
0 - 25	3/8	7/8
26 - 50	3/8	7/8
51 - 75	1/2	1 1/8
76 - 100	1/2	1 1/8
101 - 125	1/2	1 1/8

### Outdoor Unit Parameters

Unit Quantity: **1**  
 PartNumber: **38AUZA07A0A5-0A0A0**  
 Unit Model: **38AUZ**  
 Unit Size: **6 Tons**  
 Condenser Coil: **Al/Cu**  
 No. of DX Circuits: **1**  
 Voltage: **208-3-60** V-Ph-Hz  
 Clg Ent Air DB: **95.0** °F

### Outdoor Electrical Data

Unit Voltage: **208-3-60** V-Ph-Hz  
 Total Compressor Power of Unit #1: **NA**  
 Voltage Range Min: **187** V  
 Voltage Range Max: **253** V  
 Compressor Quantity: **1**  
 Fan Motors Qty: **2**  
 Notice: Outdoor unit elect. data is based on 208-3-60  
 Control Panel SCCR: 5kA RMS at Rated Symmetrical Voltage

### Outdoor Electrical Data on Units produced on or prior to 02/08/2015

Unit#1 MCA: **27.0** Amps  
 Unit#1 MOCP: **45.0** Amps  
 Compressor RLA: **19**  
 Compressor LRA: **123**

### Outdoor Electrical Data on Units produced on or after 02/09/2015

Unit#1 MCA: **28.0** Amps  
 Unit#1 MOCP: **45.0** Amps  
 Compressor RLA: **19.6**  
 Compressor LRA: **136**

### Indoor Unit Parameters

PartNumber: **40RUA08A2A6-0A0A0**  
 Unit Model: **40RUA**  
 Unit Size: **7.5 Tons**  
 Coil Rows: **4**  
 No. of Splits: **1**  
 Voltage: **208-3-60** V-Ph-Hz  
 Actual Airflow: **2400.0** CFM  
 Standard Airflow: **2400.0** CFM  
 Total Clg Cap.(Gross): **75.4** MBH  
 Sensible Clg Cap.(Gross): **59.3** MBH

## Performance Summary For AH\_CU-1A

Project: 66 Orland Square Dr. Landlord Renovations  
 Prepared By:

06/22/2015  
 12:06PM

Ent Air DB: **80.0** °F  
 Ent Air WB: **67.0** °F  
 Ent Enthalpy: **31.44** BTU/lb  
 Lvg Air DB: **57.1** °F  
 Lvg Air WB: **57.1** °F  
 Lvg Enthalpy: **24.45** BTU/lb  
 Coil Bypass Factor: **NA**

### Accessory Heating

Heating Type: **Electric**  
 Acc Htg Capacity: **89.74** MBH  
 Acc Htg Ent. Air Temp: **60.0** °F  
 Acc Htg Lvg. Air Temp: **94.6** °F  
 Acc Heater Nominal Voltage: **208-3-60**  
 Acc Heater Nominal kW: **35.0** kW  
 Acc Heater Actual Voltage: **208-3-60**  
 Acc Heater FLA: **73.0** amps  
 Acc Stage 1 Actual kW: **15.0** kW  
 Acc Stage 2 Actual kW: **11.3** kW

### Indoor Supply Fan

Indoor Unit External Static: **0.75** in wg  
 Economizer Loss: **0.07** in wg  
 Grille Loss: **0.00** in wg  
 Plenum Loss: **0.00** in wg  
 Acc. Heating Loss: **0.07** in wg  
 Total Ext Static: **0.89** in wg  
 Fan Speed: **783** RPM  
 Fan Power: **0.95** BHP  
 Fan Motor Max: **2.40** BHP  
 Fan Motor FLA: **6.9** Amps  
 Motor and Medium Static Drive Required.  
 Selected Medium Static Drive Range: 733 - 949

### Indoor Electrical Data

Unit Voltage: **208-3-60** V-Ph-Hz  
 Unit MCA: **99.8** Amps  
 Unit MOCP: **100.0** Amps  
 Notice: Indoor unit elect. data is based on 208-3-60

### Acoustics

Sound Power Levels, db re 10E-12 Watts

	Outdoor Unit (dB)	Indoor Unit (dB,Ducted)
A-Weighted Total Level	84.6	88.4
63Hz	89.3	95.3
125Hz	85.0	91.3
250Hz	82.0	87.3
500Hz	82.7	86.3
1000Hz	80.2	82.3
2000Hz	75.2	80.3
4000Hz	71.0	76.3
8000Hz	66.0	NA
Sound Message	Sound for AUZ007	Sound for RUA008

### Acoustic Notes:

- 38AUZ07-12 units are in accordance with ARI 270-2008 Sound Rating of Unitary Equipment.
- The sound data for all 38AUZ14 units are based on upon a limited amount of actual testing with the estimated sound power data being generated from this data in accordance with ARI 370-2001 for Large Outdoor Refrigerating and Air-Conditioning Equipment.

## Performance Summary For AH\_CU-1A

Project: 66 Orland Square Dr. Landlord Renovations  
Prepared By:

06/22/2015  
12:06PM

3. The indoor duct sound power data is estimated based on the ASHRAE calculation approach from the ASHRAE handbook 1987 HVAC Systems and Applications, Chapter 52.
4. The acoustic center of the unit is located at the geometric center of the unit.
5. All estimated sound power levels, dB re 1 Pico watt should not be guaranteed or certified as being the actual sound power levels.



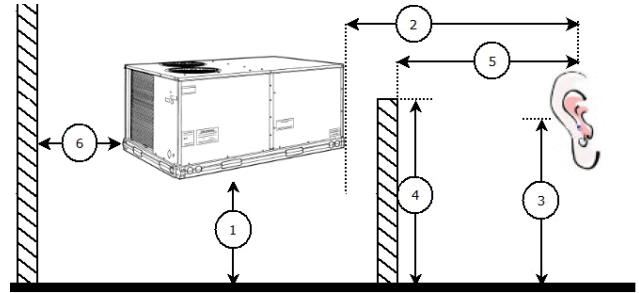
## Performance Summary For AH\_CU-1A

Project: 66 Orland Square Dr. Landlord Renovations  
 Prepared By:

06/22/2015  
 12:06PM

### Advanced Acoustics Parameters

- 1. Unit height above ground: .....1.0 ft
- 2. Horizontal distance from unit to receiver: .....20.0 ft
- 3. Receiver height above ground: .....5.7 ft
- 4. Height of obstruction: .....0.0 ft
- 5. Horizontal dist. from obstruction to receiver: .....0.0 ft
- 6. Horizontal dist. from unit to obstruction: .....0.0 ft



### Detailed Acoustics Information

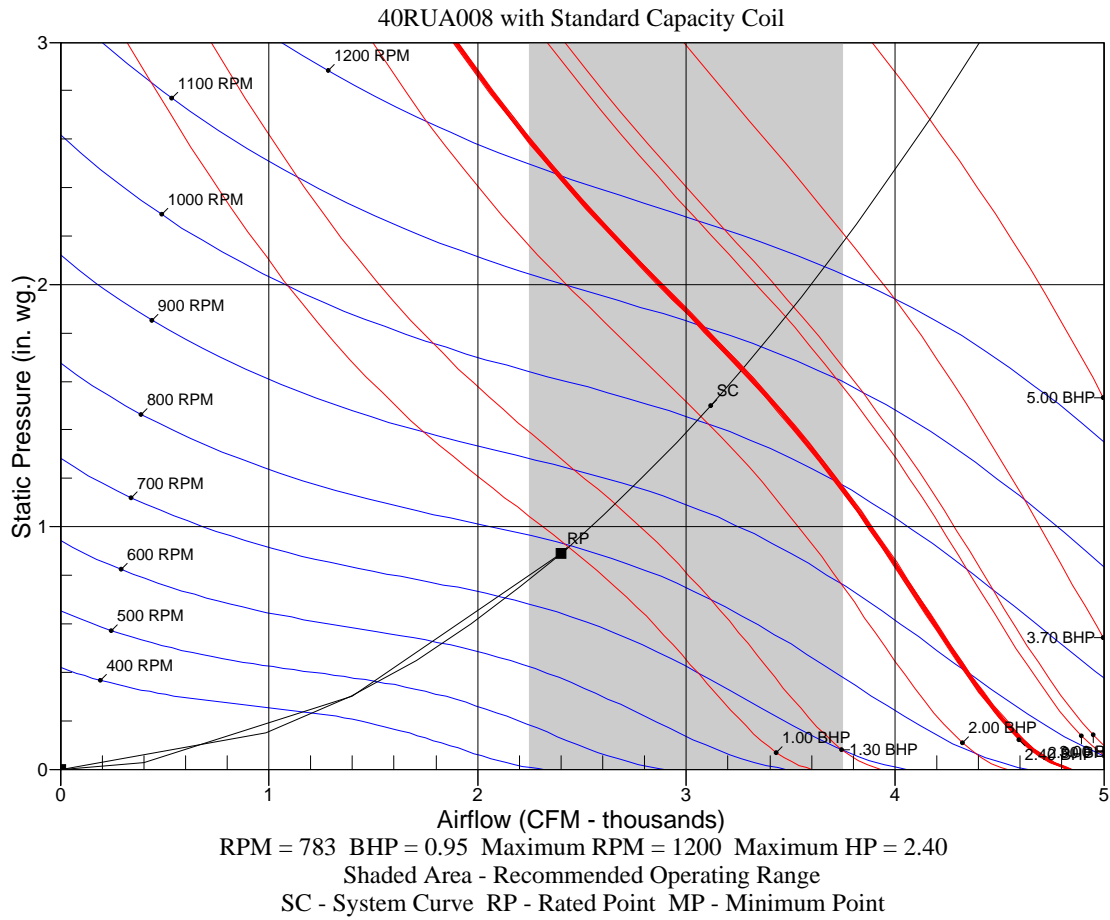
Octave Band Center Frequency, Hz	63	125	250	500	1k	2k	4k	8k	Overall
Sound Power Levels at Unit's Acoustic Center (L <sub>w</sub> ), dB	89.3	85.0	82.0	82.7	80.2	75.2	71.0	66.0	92.2
A-Wgtd Sound Power Levels at Unit's Acoustic Center (L <sub>wA</sub> ), dBA	63.1	68.9	73.4	79.5	80.2	76.4	72.0	64.9	84.6
Sound Press. Levels at Dist. Specified above (L <sub>p</sub> ), dB	65.0	60.7	57.7	58.4	55.9	50.9	46.7	41.7	67.9
A-Wgtd Sound Press. Levels at Dist. Specified above (L <sub>pA</sub> ), dBA	38.8	44.6	49.1	55.2	55.9	52.1	47.7	40.6	60.3

Calculation methods used in this program are patterned after the ASHRAE Guide; other ASHRAE Publications and the AHRI Acoustical Standards. While a very significant effort has been made to insure the technical accuracy of this program, it is assumed that the user is knowledgeable in the art of system sound estimation and is aware of the tolerances involved in real world acoustical estimation. This program makes certain assumptions as to the dominant sound sources and sound paths which may not always be appropriate to the real system being estimated. Because of this, no assurances can be offered that this software will always generate an accurate sound prediction from user supplied input data. If in doubt about the estimation of expected sound levels in a space, an Acoustical Engineer or a person with sound prediction expertise should be consulted.

# Performance Summary For AH\_CU-1A

Project: 66 Orland Square Dr. Landlord Renovations  
 Prepared By:

06/22/2015  
 12:06PM



# Acoustic Summary For AH\_CU-1A

Project: 66 Orland Square Dr. Landlord Renovations  
 Prepared By:

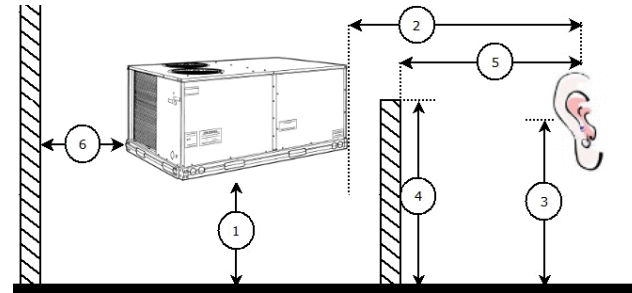
06/22/2015  
 12:06PM

**Outdoor Unit Parameters:**

Tag Name: ..... **AH\_CU-1A**  
 Unit Model: ..... **38AUZ**  
 Unit Size: ..... **6 Tons**  
 System Type: ..... **Dx Cooling Only**  
 Refrigerant Type: ..... **PURON**  
 Compressor Quantity: ..... **1**  
 Compressor Type: ..... **Scroll**

**Advanced Acoustics Parameters**

1. Unit height above ground: ..... **1.0** ft  
 2. Horizontal distance from unit to receiver: ..... **20.0** ft  
 3. Receiver height above ground: ..... **5.7** ft  
 4. Height of obstruction: ..... **0.0** ft  
 5. Horizontal distance from obstruction to receiver: ..... **0.0** ft  
 6. Horizontal distance from unit to obstruction: ..... **0.0** ft



**Detailed Acoustics Information**

Octave Band Center Frequency, Hz	63	125	250	500	1k	2k	4k	8k	Overall
Sound Power Levels at Unit's Acoustic Center (Lw), dB	89.3	85.0	82.0	82.7	80.2	75.2	71.0	66.0	92.2
A-Wgtd Sound Power Levels at Unit's Acoustic Center (LwA), dBA	63.1	68.9	73.4	79.5	80.2	76.4	72.0	64.9	84.6
Sound Press. Levels at Dist. Specified above (Lp), dB	65.0	60.7	57.7	58.4	55.9	50.9	46.7	41.7	67.9
A-Wgtd Sound Press. Levels at Dist. Specified above (LpA), dBA	38.8	44.6	49.1	55.2	55.9	52.1	47.7	40.6	60.3

Calculation methods used in this program are patterned after the ASHRAE Guide; other ASHRAE Publications and the AHRI Acoustical Standards. While a very significant effort has been made to insure the technical accuracy of this program, it is assumed that the user is knowledgeable in the art of system sound estimation and is aware of the tolerances involved in real world acoustical estimation. This program makes certain assumptions as to the dominant sound sources and sound paths which may not always be appropriate to the real system being estimated. Because of this, no assurances can be offered that this software will always generate an accurate sound prediction from user supplied input data. If in doubt about the estimation of expected sound levels in a space, an Acoustical Engineer or a person with sound prediction expertise should be consulted.

**Acoustic Notes:**

- 38AUZ07-12 units are in accordance with ARI 270-2008 Sound Rating of Unitary Equipment.
- The sound data for all 38AUZ14 units are based on upon a limited amount of actual testing with the estimated sound power data being generated from this data in accordance with ARI 370-2001 for Large Outdoor Refrigerating and Air-Conditioning Equipment.
- The indoor duct sound power data is estimated based on the ASHRAE calculation approach from the ASHRAE handbook 1987 HVAC Systems and Applications, Chapter 52.
- The acoustic center of the unit is located at the geometric center of the unit.
- All estimated sound power levels, dB re 1 Pico watt should not be guaranteed or certified as being the actual sound power levels.

**Indoor Unit Parameters:**

Tag Name: ..... **AH\_CU-1A**  
 Unit Model: ..... **40RUA**  
 Unit Size: ..... **7.5 Tons**  
 System Type: ..... **Dx Cooling Only**  
 External Static Pressure: ..... **0.89** in wg  
 Fan Speed: ..... **783** RPM  
 Fan BHP: ..... **0.95** BHP

Octave Band Center Frequency, Hz	31	63	125	250	500	1k	2k	4k	8k	Total
Sound Power, dB	NA	95.3	91.3	87.3	86.3	82.3	80.3	76.3	NA	97.8
A-Weighted Sound Power, dBA	NA	69.1	75.2	78.7	83.1	82.3	81.5	77.3	NA	88.4

**Notes:**

- The above estimated duct sound power levels are based upon the ASHRAE calculation approach from the ASHRAE 1987 HVAC Systems and Applications handbook, Chapter 52.
- Since this data is calculated, these sound power levels may be different than the actual sound power levels.

## Acoustic Summary For AH\_CU-1A

Project: 66 Orland Square Dr. Landlord Renovations  
Prepared By:


06/22/2015  
12:06PM

3. The acoustic center of the units is located at the geometric center of the unit.

# Certified Drawing for AH\_CU-1A

Project: 66 Orland Square Dr. Landlord Renovations  
 Prepared By:

06/22/2015  
 12:06PM

 UNITED TECHNOLOGIES CARRIER	P.O. BOX 4808 SYRACUSE, NY 13221	THIS DOCUMENT IS THE PROPERTY OF CARRIER CORPORATION AND IS DELIVERED UPON THE EXPRESS CONDITION THAT THE CONTENTS WILL NOT BE DISCLOSED OR USED WITHOUT CARRIER CORPORATION'S WRITTEN CONSENT.	SUBMISSION OF THESE DRAWINGS OR DOCUMENTS DOES NOT CONSTITUTE PART PERFORMANCE OR ACCEPTANCE OF CONTRACT.
---	--	---	---

UNIT	ELECTRICAL CHARACTERISTICS	STD. UNIT WT.		CORNER A		CORNER B		CORNER C		CORNER D		CENTER OF GRAVITY			UNIT HEIGHT
		LBS.	KG.	LBS.	KG.	LBS.	KG.	LBS.	KG.	LBS.	KG.	X	Y	Z	H
38AUZ-07 (MCHX)	208/230-3-60,460-3-60,575-3-60	328	149	128	58	68	31	62	28	70	32	21 [533.4]	19 [482.6]	13 [330.2]	42-3/8 [1076.0]
38AUZ-08 (MCHX)	208/230-3-60,460-3-60,575-3-60	353	160	138	63	72	33	65	29	78	35	19 [482.6]	23 [584.2]	13 [330.2]	42-3/8 [1076.0]
38AUZ-12 (MCHX)	208/230-3-60,460-3-60,575-3-60	418	190	165	75	85	39	78	35	90	41	23 [584.2]	20 [508.0]	15 [381.0]	50-3/8 [1279.2]
38AUZ-14 (MCHX)	208/230-3-60,460-3-60,575-3-60	431	196	162	73	82	37	92	42	95	43	19 [482.6]	23 [584.2]	15 [381.0]	50-3/8 [1279.2]
38AUD-12 (MCHX)	208/230-3-60,460-3-60,575-3-60	499	226	193	88	111	50	72	38	123	56	20 [508.0]	23 [584.2]	15 [381.0]	50-3/8 [1279.2]
38AUD-14 (MCHX)	208/230-3-60,460-3-60,575-3-60	505	229	190	86	88	40	76	34	151	68	20 [508.0]	24 [609.6]	15 [381.0]	50-3/8 [1279.2]
38AUZ-07 (RTPF)	208/230-3-60,460-3-60,575-3-60	389	176	141	64	96	44	62	28	91	41	18 [457.2]	24 [609.6]	21 [533.4]	42-3/8 [1076.0]
38AUZ(A,B)08 (RTPF)	208/230-3-60,460-3-60,575-3-60	391	177	142	64	96	44	62	28	91	41	18 [457.2]	24 [609.6]	21 [533.4]	42-3/8 [1076.0]
38AUZ(D,E)08 (RTPF)	208/230-3-60,460-3-60,575-3-60	430	195	142	64	96	44	76	34	111	50	18 [457.2]	24 [609.6]	21 [533.4]	42-3/8 [1076.0]
38AUZ-12 (RTPF)	208/230-3-60,460-3-60,575-3-60	490	222	177	80	120	54	78	35	114	52	18 [457.2]	24 [609.6]	24 [609.6]	50-3/8 [1279.2]
38AUZ-14 (RTPF)	208/230-3-60,460-3-60,575-3-60	598	271	195	88	142	64	110	50	151	68	20 [508.0]	25 [635.0]	24 [609.6]	50-3/8 [1279.2]
38AUD-12 (RTPF)	208/230-3-60,460-3-60,575-3-60	516	234	185	84	117	53	83	38	131	59	19 [482.6]	23 [584.2]	24 [609.6]	50-3/8 [1279.2]
38AUD-14 (RTPF)	208/230-3-60,460-3-60,575-3-60	654	297	214	97	155	70	120	54	165	75	20 [508.0]	25 [635.0]	24 [609.6]	50-3/8 [1279.2]
38AUG-07	208/230-3-60,460-3-60,575-3-60	444	201	134	61	97	44	90	41	123	56	22 [558.8]	25 [635.0]	13 [330.2]	42-3/8 [1076.0]
38AUG(A,B)08	208/230-3-60,460-3-60,575-3-60	483	219	162	74	110	50	85	39	125	57	20 [508.0]	24 [609.6]	21 [533.4]	42-3/8 [1076.0]
38AUG(D,E)08	208/230-3-60,460-3-60,575-3-60	523	237	174	79	118	54	96	44	135	61	21 [533.4]	24 [609.6]	23 [584.2]	50-3/8 [1279.2]
38AUG-12	208/230-3-60,460-3-60,575-3-60	575	261	186	84	126	57	106	48	157	71	21 [533.4]	24 [609.6]	23 [584.2]	50-3/8 [1279.2]

**NOTES:**

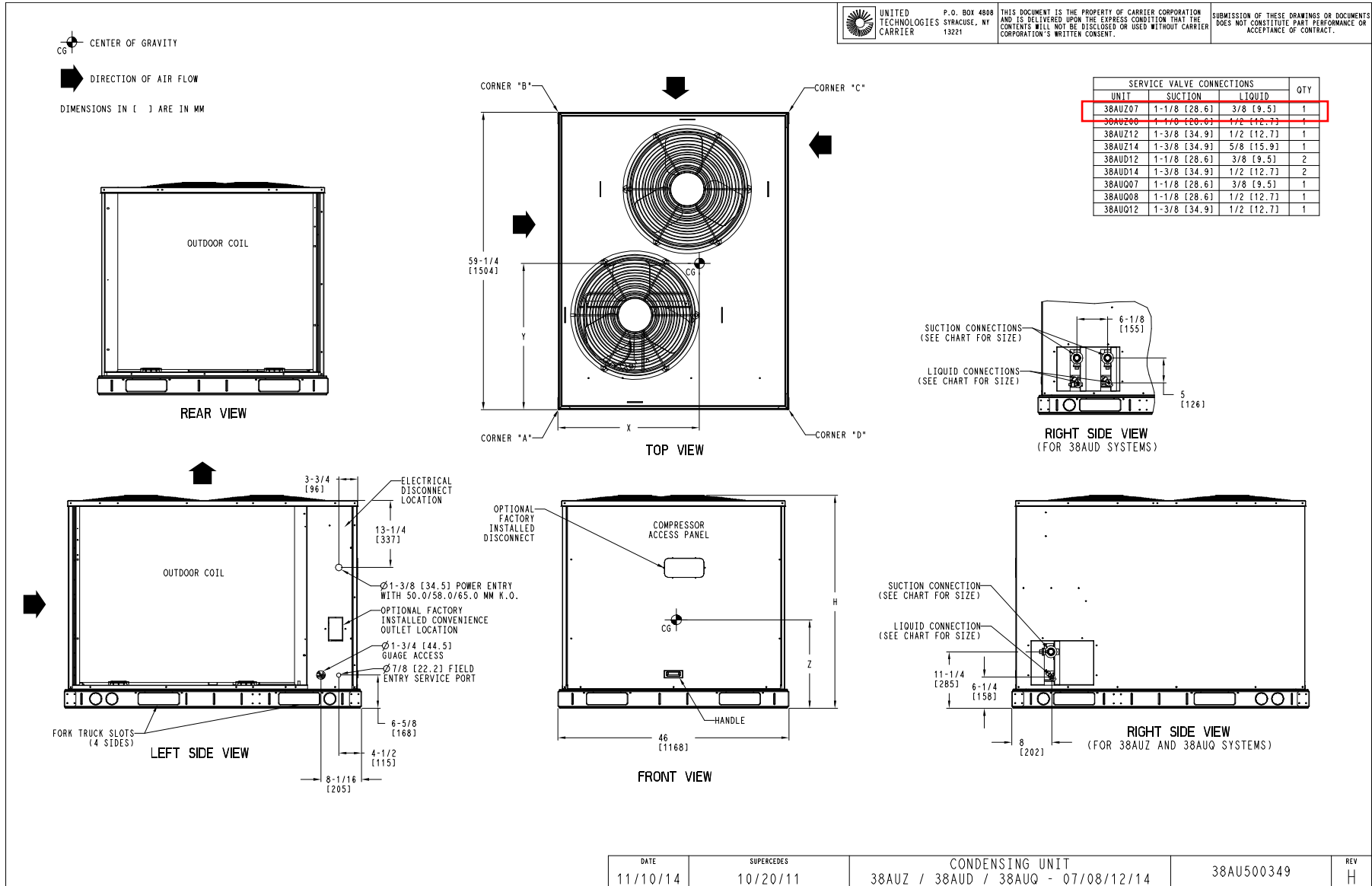
1. MINIMUM CLEARANCE (LOCAL CODES OR JURISDICTION MAY PREVAIL):
  - A. BOTTOM TO COMBUSTIBLE SURFACES: 0 INCHES.
  - B. OUTDOOR COIL, FOR PROPER AIR FLOW: 36 INCHES ONE SIDE, 12 INCHES THE OTHER. THE SIDE GETTING THE GREATER CLEARANCE IS OPTIONAL. STANDARD CLEARANCES ON REMAINING TWO SIDES.
  - C. OVERHEAD: 60 INCHES, TO ASSURE PROPER OUTDOOR FAN OPERATION.
  - D. BETWEEN UNITS: CONTROL BOX SIDE, 42 INCHES PER NEC.
  - E. BETWEEN UNIT AND UNGROUNDED SURFACES: CONTROL BOX SIDE, 36 INCHES PER NEC.
  - F. BETWEEN UNIT AND BLOCK OR CONCRETE WALLS AND OTHER GROUNDED SURFACES: CONTROL BOX SIDE, 42 INCHES PER NEC.
2. WITH EXCEPTION OF THE CLEARANCE FOR THE OUTDOOR COIL AS STATED IN NOTE 1B, A REMOVABLE FENCE OR BARRICADE REQUIRES NO CLEARANCE.
3. UNITS MAY BE INSTALLED ON COMBUSTIBLE FLOORS MADE FROM WOOD OR CLASS A, B OR C ROOF COVERING MATERIAL.

DATE	SUPERCEDES	CONDENSING UNIT	REV
11/10/14	10/20/11	38AUZ / 38AUD / 38AUG - 07/08/12/14	H

# Certified Drawing for AH\_CU-1A

Project: 66 Orland Square Dr. Landlord Renovations  
 Prepared By:

06/22/2015  
 12:06PM



DATE	SUPERCEDES	CONDENSING UNIT		REV
11/10/14	10/20/11	38AUZ / 38AUD / 38AUQ - 07/08/12/14	38AU500349	H

# Certified Drawing for AH\_CU-1A

Project: 66 Orland Square Dr. Landlord Renovations  
 Prepared By:

06/22/2015  
 12:06PM

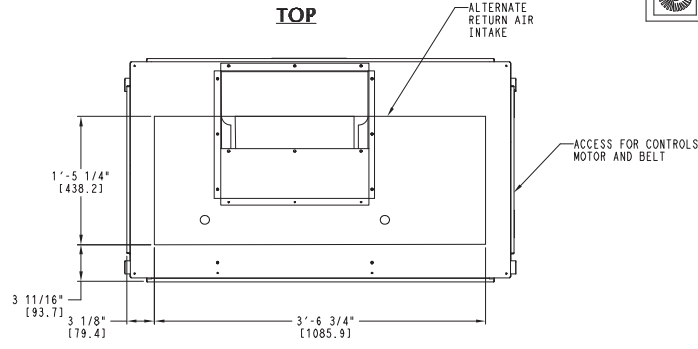
UNIT	UNIT WEIGHT (W/TXV)
40RUA-07	388 lbs [181 kg]
40RUA-08	404 lbs [183 kg]
40RUA-12	425 lbs [193 kg]
40RUO-07	381 lbs [173 kg]
40RUO-08	385 lbs [175 kg]
40RUO-12	427 lbs [194 kg]
40RUS-08	390 lbs [177 kg]
40RUS-10	391 lbs [177 kg]
40RUS-12	391 lbs [177 kg]



UNITED TECHNOLOGIES SYRACUSE, NY  
 CARRIER P.O. BOX 4808 13201

THIS DOCUMENT IS THE PROPERTY OF CARRIER CORPORATION AND IS DELIVERED UPON THE EXPRESS CONDITION THAT THE CONTENTS WILL NOT BE DISCLOSED OR USED WITHOUT CARRIER CORPORATION'S WRITTEN CONSENT.

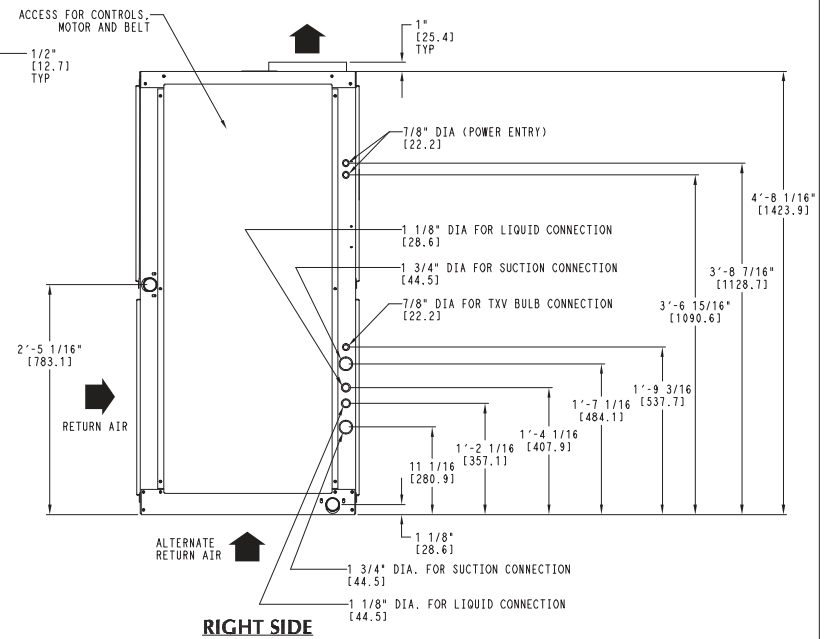
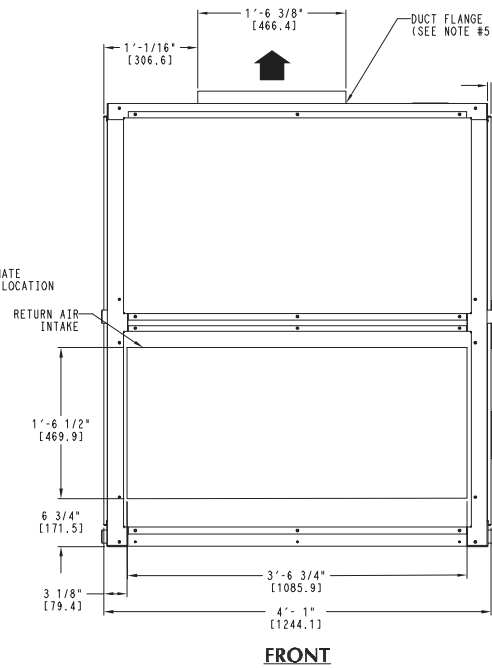
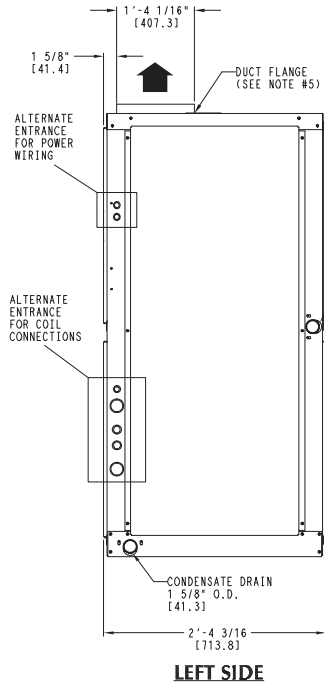
SUBMISSION OF THESE DRAWINGS OR DOCUMENTS DOES NOT CONSTITUTE PART PERFORMANCE OR ACCEPTANCE OF CONTRACT.



- NOTES:
- DIMENSIONS IN ( ) ARE IN MILLIMETERS.
  - DIRECTIONS OF AIRFLOW.
  - RECOMMENDED CLEARANCE:
    - REAR: 3 in. [76 mm]
    - FRONT: 2 ft 6 in. [762 mm]
    - RIGHT SIDE: 2 ft 6 in. [762 mm]
    - LEFT SIDE: 2 ft 6 in. [762 mm]
 LOCAL CODES OR JURISDICTION MAY PREVAIL.
  - LIQUID PIPING NOT SUPPLIED BY CARRIER.
  - DUCT FLANGE IS FACTORY SUPPLIED AND FIELD INSTALLED.

ACCESSORY	SEE DRAWING
DISCHARGE PLENUM	40RMS00996
ECONOMIZER	40RMS00999
STEAM COIL	40RMS00999
HOT WATER COIL	40RMS00999
RETURN AIR GRILLE	40RMS00996
OVERHEAD SUSPENSION	40RMS00996
SUBBASE	40RMS00996
ELECTRIC HEAT	40RMS01002

UNRELEASED DATA



DATE	SUPERCEDES	FAN COIL UNITS	40RU A / Q / S - 07 / 08 / 10 / 12	40RU500024	REV
01/27/10	04/15/09				E

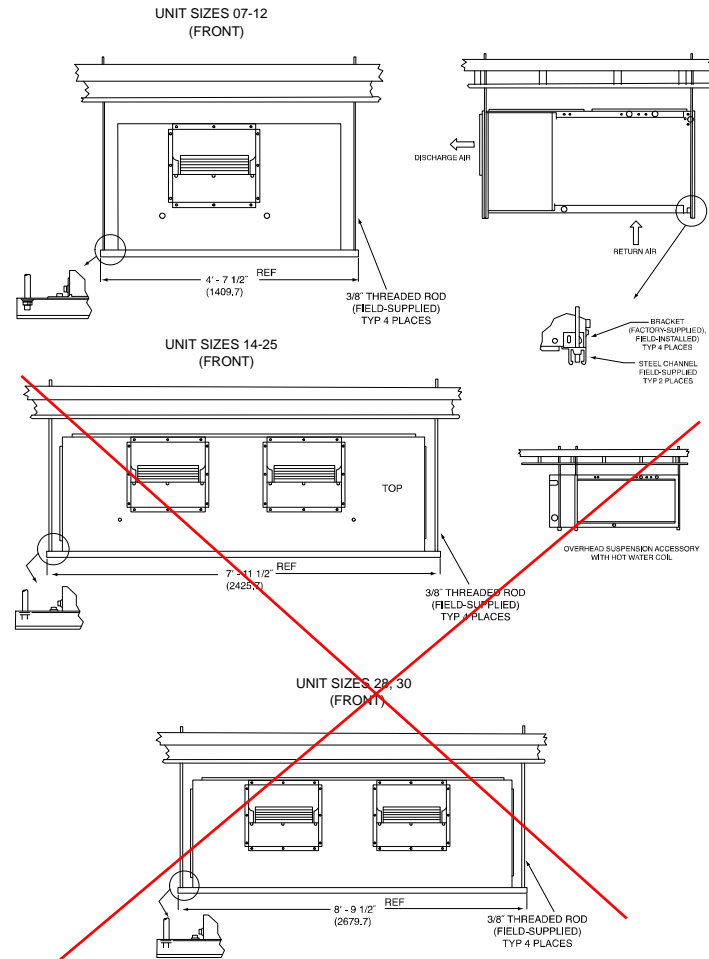
# Certified Drawing for AH\_CU-1A

Project: 66 Orland Square Dr. Landlord Renovations  
Prepared By:

06/22/2015  
12:06PM

## DIMENSIONS (cont.)

### OVERHEAD SUSPENSION ACCESSORY



NOTE: Dimensions in [ ] are millimeters.

CD9485



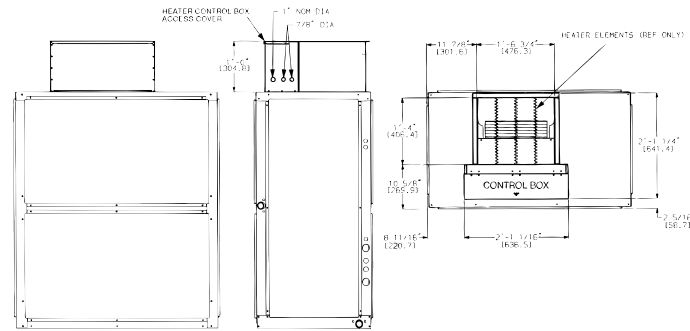
# Certified Drawing for AH\_CU-1A

Project: 66 Orland Square Dr. Landlord Renovations  
Prepared By:

06/22/2015  
12:06PM

## DIMENSIONS (cont.)

### ELECTRIC HEAT ACCESSORY UNIT SIZES 07 - 12



40RU

NOTE: Dimensions in [ ] are millimeters.

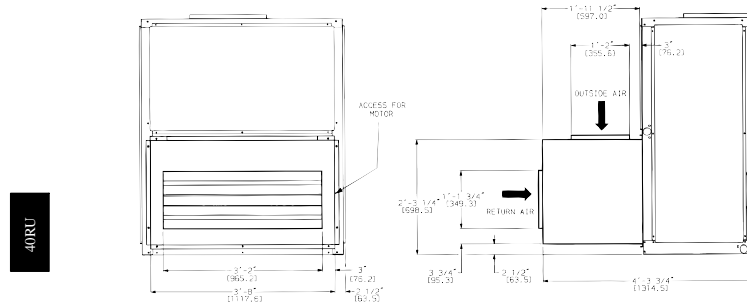
# Certified Drawing for AH\_CU-1A

Project: 66 Orland Square Dr. Landlord Renovations  
Prepared By:

06/22/2015  
12:06PM

## DIMENSIONS (cont.)

### ECONOMIZER ACCESSORY UNIT SIZES 07-12

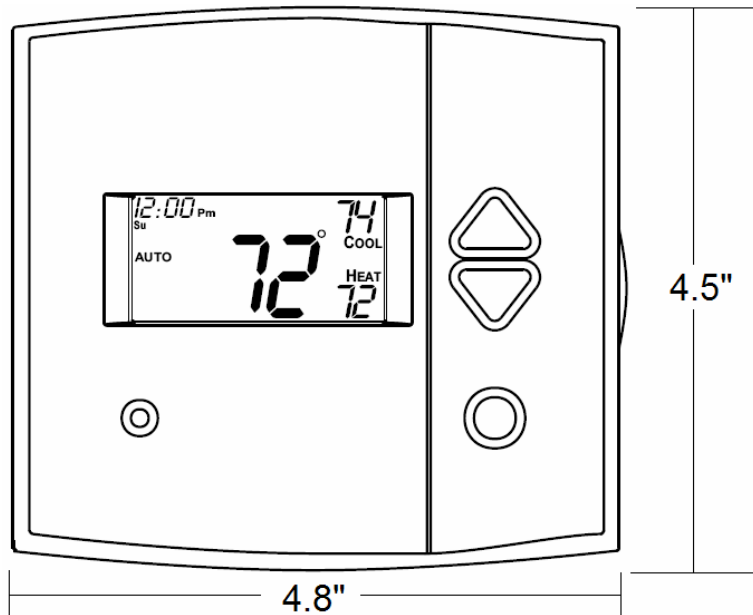


#### NOTE:

1. For horizontal unit applications, economizer can be attached to end of unit opposite duct connections.
2. Dimensions in [ ] are millimeters.

C09488

# Venstar Programmable Thermostat T2800



**STANDARD FEATURES:**

- Up to 3-Occupied, 1-Unoccupied periods per day, with copy command for easy programming
- Accepts humidification/dehumidification control module (Venstar part number ACC0430)
- Auto changeover, 3-stage heat, 2-stage cool for use with gas/electric, heat pump, electric & hydronic heat
- Configurable for manual changeover, also configurable programmable or non-programmable
- Adjustable deadbands and timers
- 3 configurable outputs for maximum flexibility (MISC1, MISC2, MISC3)
- Extra 6<sup>th</sup> and 7<sup>th</sup> outputs (beyond our standard thermostat)
- Smart Fan (keeps the fan from running during unoccupied periods)
- Smart recovery
- Display shows both heating an cooling setpoints and room temperature simultaneously
- All programming and setpoints stored in non-volatile memory, and are never lost in power failure
- Service filter and service UV lamp indicators
- Red/Green LED shows whether thermostat is calling for heating or cooling
- 5-minute compressor time guard and adjustable cycle limit, both defeatable for servicing equipment
- Outdoor sensor ready with high and low temperature of the day
- Thermoglow backlit electro-luminous display and backlit color coded keys and legends
- Accepts accessory IR Remote Control system (Venstar part number ACC0431)
- Accepts accessory EZ Programmer (Venstar part number ACC0432)
- For accessory locking cover use (Venstar part number ACC0620)

MODEL:	T2800	QUANTITY:		DATE:		
JOB NAME:						
LOCATION:						
BUYER:				BUYER P.O.#:		
ENGINEER:						