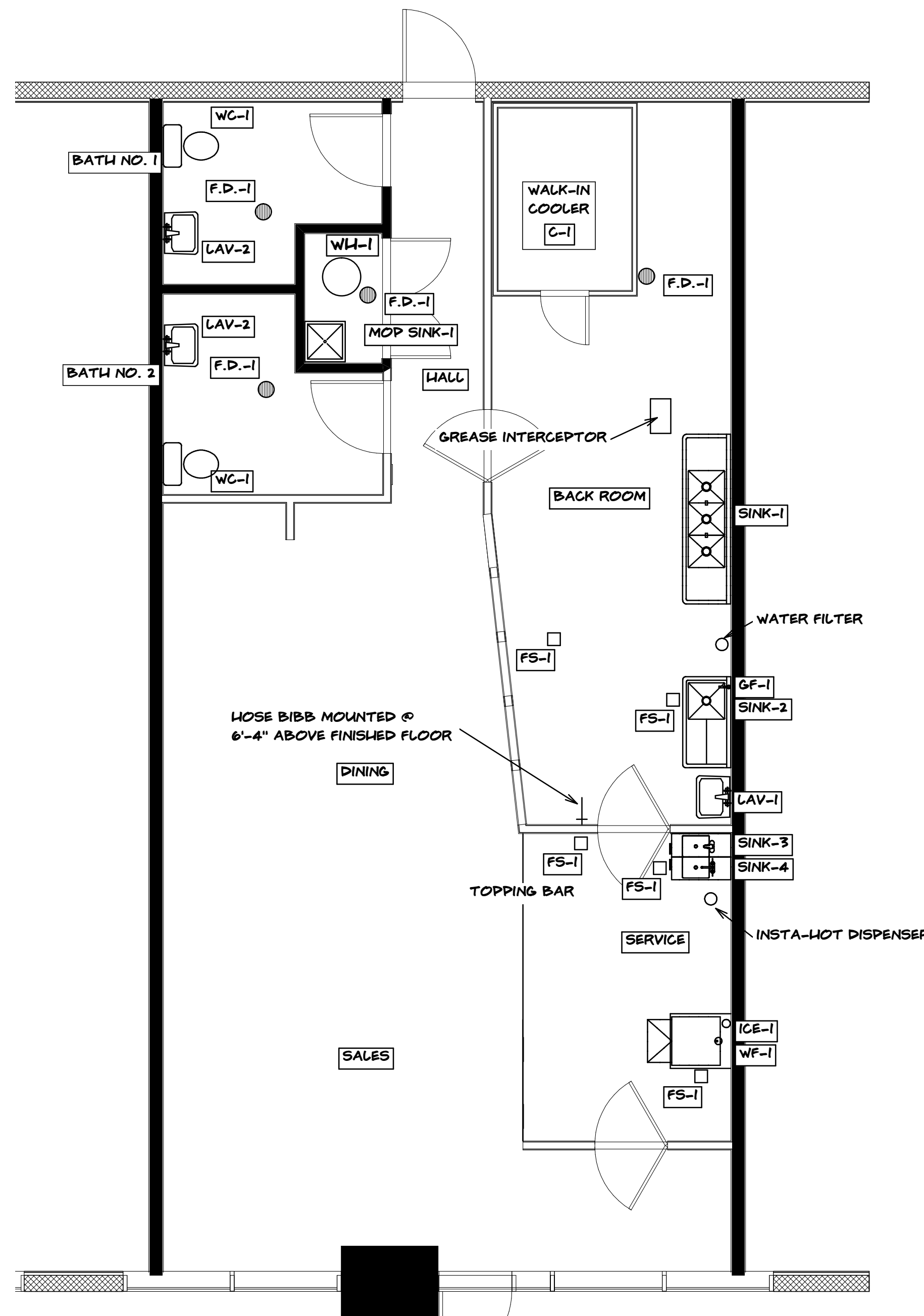


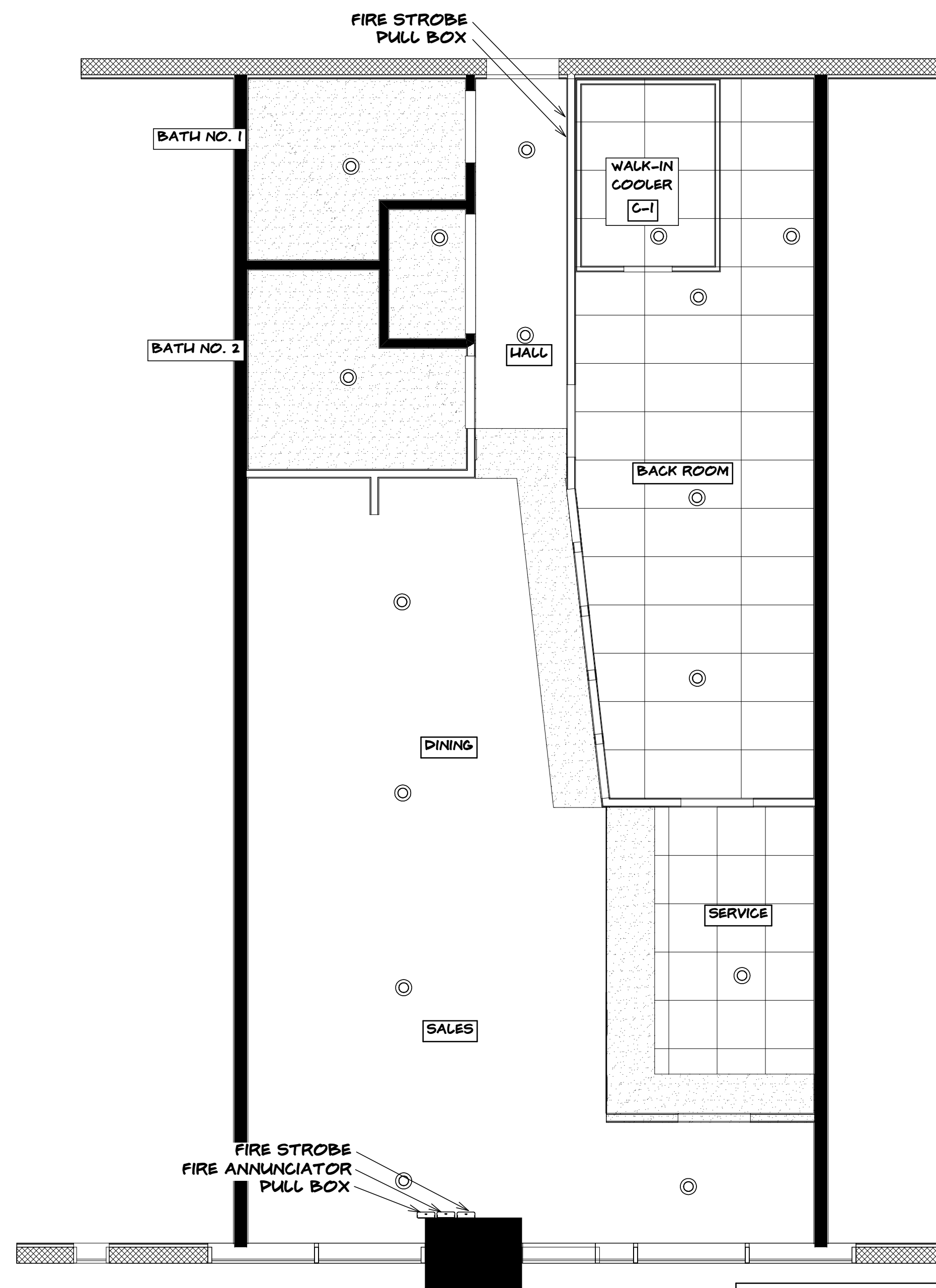
	REVISED	
	ISSUED FOR BID	02-21-12
	REVISED	
	ISSUED FOR RED MANGO APPROVAL	02-14-12
	ALTERNATE NO. 1	
	ISSUED FOR RED MANGO APPROVAL	02-02-12
	ALTERNATE NO. 1	
	ISSUED FOR RED MANGO APPROVAL	01-30-12
	ISSUED FOR RED MANGO APPROVAL	01-23-12
	ISSUED FOR RED MANGO REVIEW	11-07-11

INTERIOR ALTERATION TO:

RED MANGO
5230 DEMPSTER STREET
SKOKIE, ILLINOIS 60077



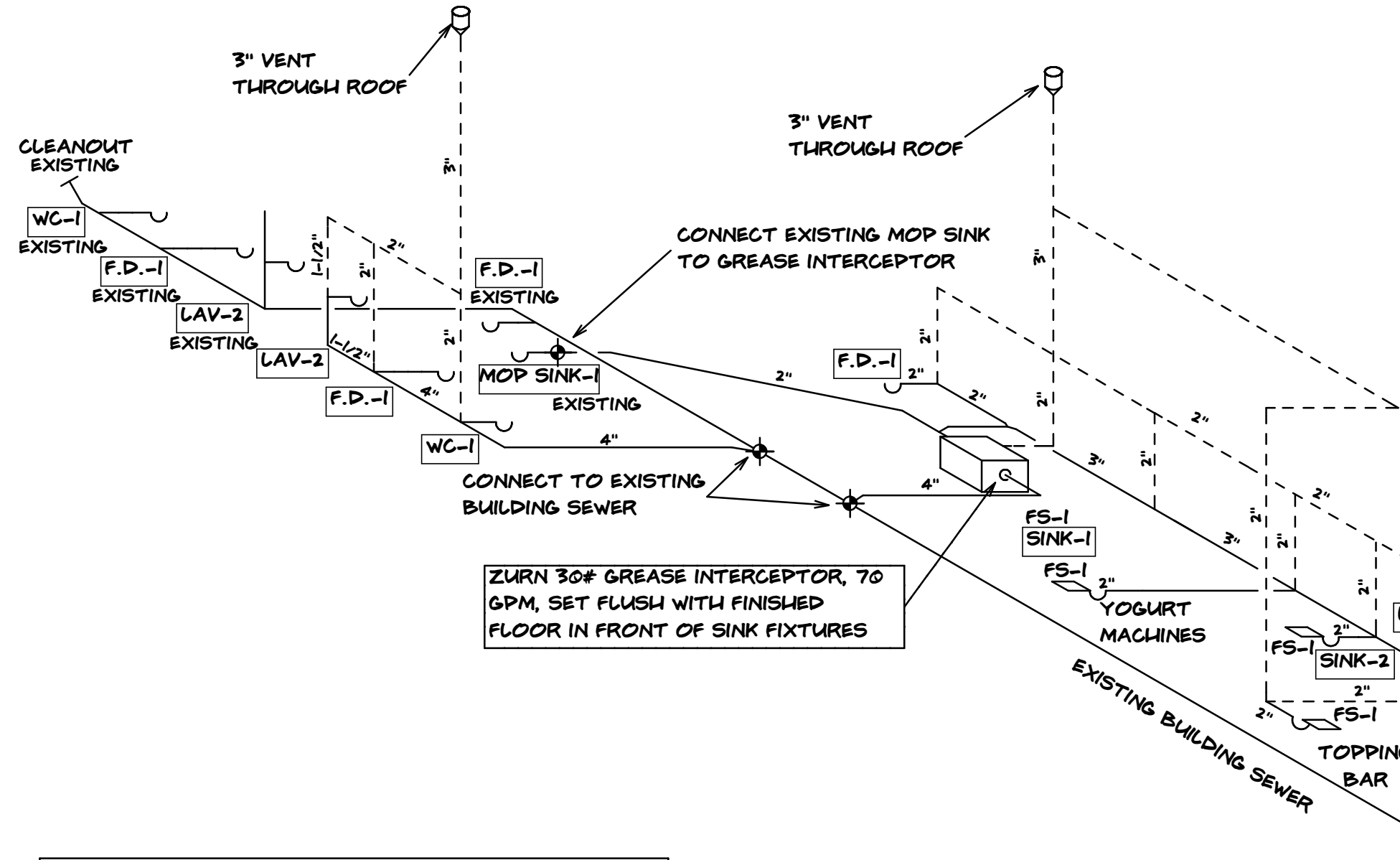
PARTIAL 1ST FLOOR PLUMBING PLAN
 1/4"=1'-0"



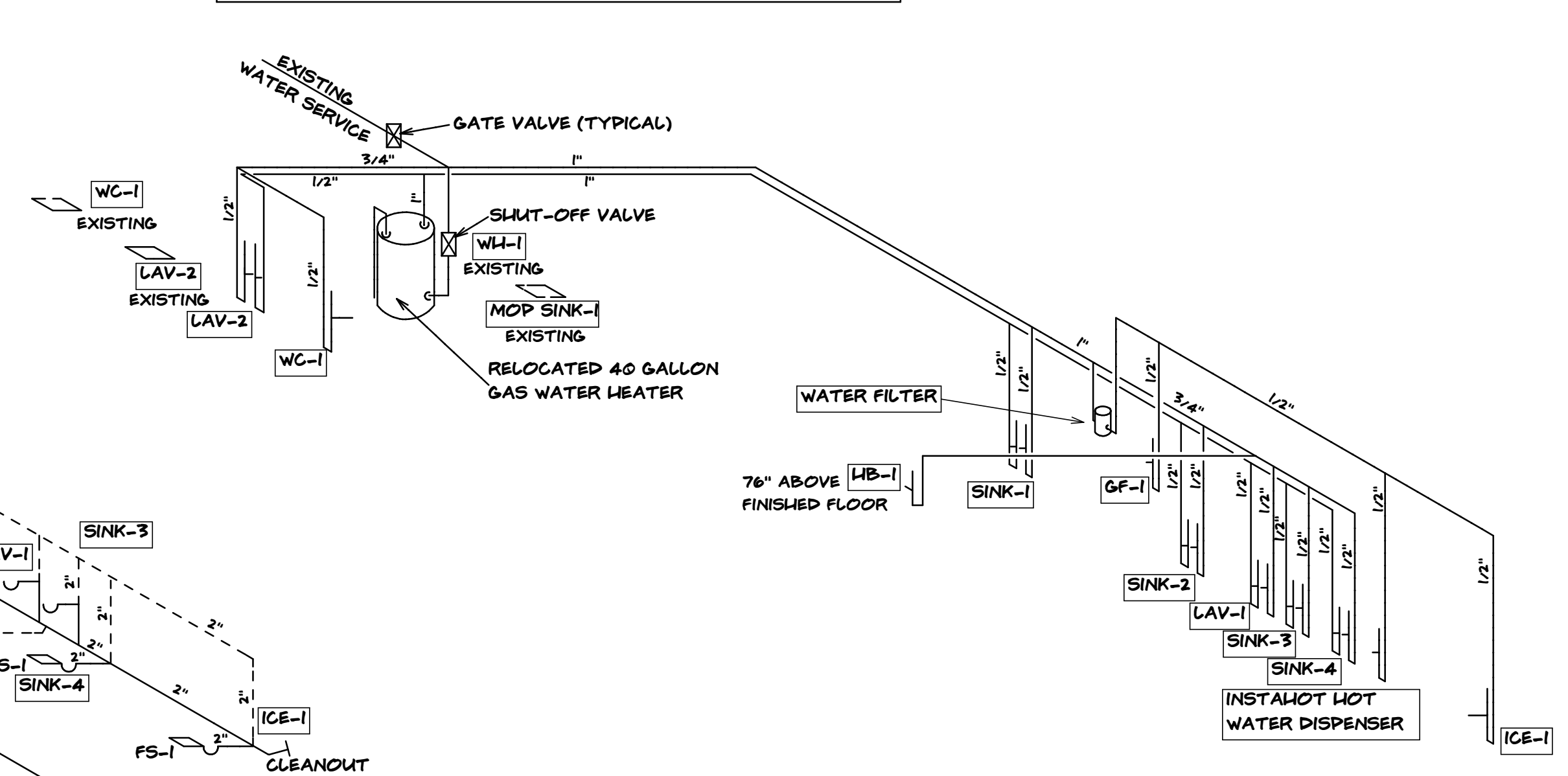
PARTIAL 1ST FLOOR FIRE SPRINKLER PLAN
 1/4"=1'-0"

FIRE SPRINKLER LEGEND
 ○ STANDARD COVERAGE CONCEALED PENDENT SPRINKLER HEAD, WHITE COVER PLATE

PLUMBING FIXTURE SCHEDULE				
SYMBOL	DESCRIPTION	SPECIFICATION	QUANTITY	
			NEW	EXISTING
SINK-1	TRIPLE BOWL	LOAD KING, N-1816-3-DB/18L, 2F, STAINLESS STEEL, OPEN SITE DRAIN	1	-
SINK-2	SINGLE BOWL	LOAD KING, N-1818-1-DB24DBRL, 1F, STAINLESS STEEL, OPEN SITE DRAIN	1	-
SINK-3	DROP IN HAND SINK	LOAD KING, PART #RDM-004-001-0000-A	1	-
SINK-4	COMBINATION HAND/DUMP SINK	LOAD KING, PART #RDM-004-001-0000-A	1	-
LAV-1	WALL-MOUNTED LAVATORY	LOAD KING, PART #1050579	1	-
GF-1	WALL MOUNTED GLASS FILLER	T&S BRASS AND BRONZE WORKS, #B-1205	1	-
ICE-1	ICE MAKER	ICE O-MATIC, #ICEU 220	1	-
WF-1	WATER FILTER	EVERPURE, LLC, INSURICE SINGLE- 12000 ³ SERIES	1	-
WC-1	WATER CLOSET	AMERICAN STANDARD, CADET, ELONGATED BOWL, 2898-012, VITREOUS CHINA SEAT, BEMIS #219555/C WHITE ANTI-MICROBIAL ELONGATED SEAT WITH OPEN FRONT, LESS COVER AMERICAN STANDARD, LUCERNE #0356.015, 20"X18", VITREOUS CHINA, WHITE FAUCET: SCOT S-60-6-11, METERING/TEMPERATURE SELECTION	1	1
FD-1	FLOOR DRAIN	JAY R. SMITH, MODEL NO. 2030T	-	1
WH-1	GAS WATER HEATER	EXISTING A.O. SMITH 40 GALLON GAS WATER HEATER	1	-
MOP SINK-1	MOP BASIN	EXISTING	1	-
GREASE TRAP	GREASE TRAP	ZURN 30#, 70 GPM, MODEL NO. Z 1170-700	1	-
FS-1	FLOOR SINK	ZURN #FD2375-T, 12"X12"X5-3/4" DEEP COATED CAST IRON BODY, WHITE ACID-RESISTING PORCELAIN ENAMEL INTERIOR COATING, ABS ANTI-SPLASH DOME	1	-
HB-1	HOSE BIBB	MOUNTED 6" ABOVE FINISHED FLOOR	1	-



PLUMBING NOTES:
 ALL COPPER VENT/WASTE PIPE TO BE "M" TYPE
 ALL COPPER ABOVE GROUND TO BE "L" TYPE
 ALL COPPER BELOW GROUND TO BE "K" TYPE
 ALL COPPER FITTINGS TO BE FORGED WITH NO LEAD/
 SOLDER/FLUX
 PROVIDE 24" AIR CHAMBERS ON ALL MAIN WATER RISERS
 PROVIDE 12" AIR CHAMBERS ON ALL FIXTURES
 PROVIDE SHUT-OFF STOPS ON ALL FIXTURES



WASTE AND VENT

PLUMBING RISER DIAGRAMS

SUPPLY

ROBERT N. FRIEDMAN
 ARCHITECT
 4137 EMERSON STREET
 SKOKIE, ILLINOIS 60076
 PHONE/FAX (847) 673-0063

SHEET NO.
A-6
 OF 6